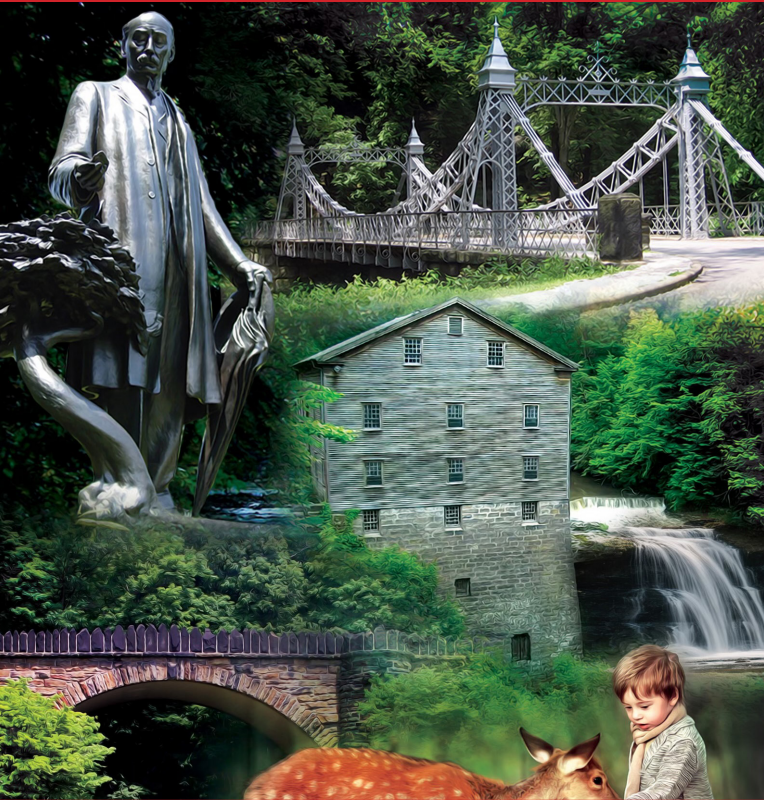


County Engineers Association of Ohio
Serving Ohio's Counties Since 1803

2024 ROSTER



Patrick Ginnetti, P.E., P.S., Mahoning County Engineer, President
Scott C. Coleman, P.E., P.S., Logan County Engineer, First Vice President
Dean C. Ringle, P.E., P.S., CEAO Executive Director



1103 Schrock Road, Suite 202 • Columbus, Ohio 43229

614-221-0707 • www.ceao.org



Let's Piece it Together.

Bridge Kits are a DIY bridge for the time constrained looking for an affordable solution.

- 1 Buy.
- 2 Unpack.
- 3 Install.

Order your Bridge Kit and U.S. Bridge will ship it to your job site, locally or worldwide. Each Kit includes all the pieces and parts required for each project.

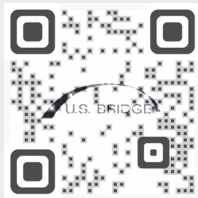


SHOP BRIDGE KITS

OHIO LEVEL 6 FABRICATOR



(866) 205-6432
usbridge.com
info@usbridge.com

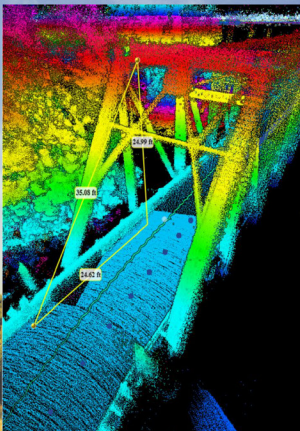













Mapster 3D Mobile Mapping

Creating Your 3D World[®]

Mapster 3D Mobile Mapping allows you to visualize, measure, analyze and catalog all within your 3D world.



Traffic Safety Studies

-  No-Passing Zone Study
-  3D Mobile Mapping w/LiDAR (Mapster)
-  Pavement Marking Inv./Insp. Studies
-  Right-of-Way (Hazard) Maintenance Study
-  Horizontal Curve (Ball Bank) Study
-  Guardrail Inv./Insp. & Compliance Studies
-  Speed Zone & Traffic Count Studies
-  Sign Inv./Insp. & Compliance Studies
-  GIS Integration

MasterMind, LLC
Phone: (740) 816-2221
www.onlinemastermind.com
Email: sales@onlinemastermind.com





AMERICAN
STRUCTUREPOINT
INC.

ARCHITECTURE + INTERIORS • CIVIL ENGINEERING • CONSTRUCTION SOLUTIONS
ENVIRONMENTAL SERVICES • INVESTIGATIVE • IT SOLUTIONS
LAND SURVEYING • PLANNING • ECONOMIC DEVELOPMENT
STRUCTURAL ENGINEERING • TRANSPORTATION • UTILITY INFRASTRUCTURE

www.structurepoint.com



What makes **CT Consultants** different?

We deliver smart, sustainable solutions that help shape the present and prepare our clients for the future.



consultants
engineers • architects • planners
www.ctconsultants.com

NEED EQUIPMENT? WE'RE ON THE CASE



We have all the equipment you need for your projects! Get your skid steers, backhoes, excavators, and more from Southeastern Equipment!

CONTACT YOUR LOCAL BRANCH TODAY!

Southeastern
EQUIPMENT COMPANY



CASE
CONSTRUCTION

800-798-5438
southeasternequip.com



**THE
FIRELANDS
SUPPLY
CO.**

HIGHWAY GUARDRAIL MATERIALS & SUPPLIES



Sign post are available in galvanized and green powder coated.

We are the stocking distributor for NUCOR Marion Steel Rib-Bak Sign Post and Cable Rail Systems in Ohio.



Flex Delineators:

- Higher Reflectivity
- Stainless Steel Spring
- Flexes back after debris or snow impact
- Easy to install

Rail End Terminals:

- MSKT
- CAT System
- SRT-350 (B-98)
- SKT-350
- Anchor Assemblies



Distributor of:

- NUCOR Sign Post and Cable Rail Systems
- ODOT Approved Guardrail and Post
- Used Guardrail and Post
- Barrier Reflectors and Delineator Post
- Geotextiles and Silt Control Products
- Erosion Control - Temporary and Permanent
- Maccaferri Gabions

**CONTACT US AT:
419-668-1802**

**18 SOUTH NORWALK RD.
NORWALK, OH 44857**

2024 Reflections from Ringle



File Photo

What is your quest? For the staff at CEAO, we are continually pursuing the best we can offer to our members. Throughout the year that includes offering a variety of educational opportunities. It consists of a never-ending search for additional funding for county transportation infrastructure. And we are being vigilant with legislation that affects county engineers in their service to the public. Altogether, it is maintaining the *Traditions of Excellence* of our organization and those of Ohio's County Engineers.

We are pleased to present the 2024 edition of our County Engineers roster. We believe it is a comprehensive and invaluable resource of information and contacts, and trust you will also find it the same. Thank you to all who support CEAO and our mission to assist our members as they make positive impacts around Ohio, serving as the *Guardians of Transportation* for our local infrastructure. Sincerely,

Dean C. Ringle, P.E., P.S.
CEAO Executive Director

Cover Photo: Original Artwork by Ray Simon (used by permission)

Cover montage of Mahoning County (clockwise from upper left):

Volney Rogers Memorial: bronze statue of Mill Creek Park founder, dedicated in 1920.

The Suspension Bridge over Mill Creek: located on Valley Drive, erected in 1895.

Lanterman's Mill along Mill Creek: built 1845-46, restored 1982-85.

The Stone Arch Parapet Bridge: erected in 1913, on the east side of Lake Glacier in Mill Creek Park.

Ohio's Local Technical Assistance Program (LTAP)

Providing Ohio's local governments training and technical assistance in the areas of safety, workforce development, infrastructure management and organizational excellence.

PROJECT MANAGEMENT



UAS DRONE eLEARNING



Let us help develop your career path with our available trainings

CONSTRUCTION INSPECTION



750+ TRANSPORTATION FOCUSED COURSES



*Available 24-7...
Online On-Demand...
At your own pace.*

transportation.ohio.gov/ltap



OHIO LTAP | Local Technical Assistance Program

County Engineers Association of Ohio

2024 Roster



County Engineers Association of Ohio

1103 Schrock Road, Suite 202

Columbus, Ohio 43229

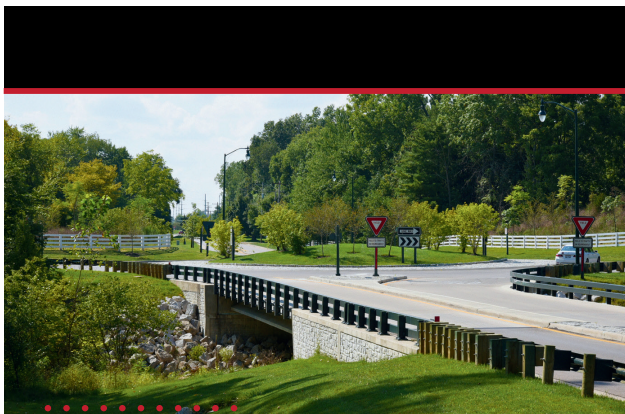
PHONE (614) 221-0707

info@ceao.org

www.ceao.org

Table of Contents

Officers & Directors	9
District Directors.....	10
Special Recognition	11
Ohio's 88 County Engineers by District	12
Alphabetically by County	16
CEAO Staff	71
CEAO Consultants	74
Ohio Legislative Directory	75
United States Senators	75
United States Representatives	76
Ohio Senate	77
Ohio House of Representatives	79
ODOT Personnel	81
ODOT District Deputy Directors	83
Ohio County Official Associations	83
CEAO Supporting Members	86
Products & Services Guide	89
Advertisers Index	102



CARPENTER MARTY *transportation*

Bridge • Roadway • Survey • Traffic

6612 Singletree Drive Columbus, Ohio 43229

614.656.2424

10816 Millington Court, Suite 104, Cincinnati, Ohio 45242

513.734.8542

www.cmtran.com

(RLP) Parsons Equipment

(RLP) Parsons Equipment
7155 St. Rt. 142, West Jefferson, OH 43162
(RLP) ROADMASTER CP-500 (RLP) KNUCKLEHEAD - BOMFORD

Bomford Distributor & National Parts Hub

Celebrating 95 years of business!

EVOLUTION PROGRAM™

- Reclaiming resources already present
- Cost effective and more efficient
- Get more uses out of your tractor



(RLP) ROADMASTER  **& KNUCKLEHEAD** **ROADSIDE RECLAIMER**

*Patent Protected

Contract # 070821-BFD

Sourcewell 

BOMFORD
TURNER

Contact Aprile Parsons

P: 800-456-6937 • Email: aprile.stryker@bomfordrlpequip.com

7155 ST. RT. 142, PO BOX 28, WEST JEFFERSON, OH 43162

 www.facebook.com/rlpmowers
WEBSITE: www.bomfordcenter.com

County Engineers Association of Ohio

2024 Officers and Directors

President



Patrick Ginnetti, P.E., P.S.
Mahoning County Engineer
P (330) 799-1581
pginnetti@mahoningcountyoh.gov

1st Vice President



Scott C. Coleman, P.E., P.S.
Logan County Engineer
P (937) 592-2791
scoleman@lceo.us

2nd Vice President



Douglas E. Cade, P.E., P.S.
Hancock County Engineer
P (419) 422-7433
decade@co.hancock.oh.us

Treasurer



James A. Wiechart, P.E., P.S.
Mercer County Engineer
P (419) 586-7759
jim.wiechart
@engineer.mercercountyohio.gov

Immediate Past President



Brett Boothe, P.E., P.S.
Gallia County Engineer
P (740) 446-4009
boothe@galliacountyengineer.com

District Directors

- District 1** Brion E. Rhodes, P.E., P.S. – Allen County Engineer
(O): 419-228-3196 (F): 419-227-2920
(E): brhodes@allencountyohio.com
- District 2** Mike Pniewski, P.E., P.S. – Lucas County Engineer
(O): 419-213-2860 (F): 419-213-2829
(E): mpniewski@co.lucas.oh.us
- District 3** Edward J. Meixner, P.E., P.S. – Ashland County Engineer
(O): 419-282-4281 (F): 419-282-4328
(E): emeixner@ashlandcounty.org
- District 4** Tim Martin, P.E., P.S. – Ashtabula County Engineer
(O): 440-576-3707 (F): 440-576-3719
(E): tmartin@astabulacountyengineer.org
- District 5** Jeremiah D. Upp, P.E., P.S. – Fairfield County Engineer
(O): 740-652-2300 (F): 740-687-7055
(E): jupp@fceo.org
- District 6** Bryan Dhume, P.E., P.S. – Madison County Engineer
(O): 740-852-9404 (F): 740-852-9530
(E): bryan.dhume@madison.oh.gov
- District 7** Andrew Baumer, P.E., P.S. – Auglaize County Engineer
(O): 419-739-6520 (F): 419-739-6521
(E): abaumer@auglaizecounty.org
- District 8** Stephanie A. Goff, P.E., P.S. – Greene County Engineer
(O): 937-562-7500 (F): 937-562-7510
(E): stephanie.goff@greencountyohio.gov
- District 9** Patrick Leighty P.E., P.S. – Lawrence County Engineer
(O): 740-533-4317 (F): 740-534-5808
(E): pleighty@lawrencecountyengineer..org
- District 10** Roger E. Wright, P.E., P.S. – Washington County Engineer
(O): 740-376-7430 (F): 740-376-7085
(E): rwright@wcgov.org
- District 11** Brian J. Wise, P.E., P.S. – Carroll County Engineer
(O): 330-627-4110 (F): 330-627-3661
(E): bwise@carrollcountyohio.us
- District 12** Joe Cattell, P.E., P.S. – Geauga County Engineer
(O): 440-279-1800 (F): 440-285-9864
(E): jcattell@geauga.oh.gov

Directors as of 3-1-24. Please see CEAO website for updates and listing of committee members.

Special Recognition

Congratulations to Roger Wright, P.E., P.S. who was elected by his peers for outstanding performance in the office of County Engineer.

2023 County Engineer of the Year



Roger Wright, P.E., P.S.
Washington County Engineer

BURGESS & NIPLE
Engineers ■ Architects ■ Planners

Beach Road
Bridge Inspection
Franklin County, OH

Ideas in
MOTION ➤

Ohio offices: Akron, Cincinnati, Columbus, Mentor
1.800.282.1761

burgessniple.com



Ohio's 88 County Engineers by CEAO Districts

DISTRICT 1

Allen County
Brion E. Rhodes

Defiance County
Warren J. Schlatter

Hancock County
Douglas E. Cade

Hardin County
Lucas J. Underwood

Paulding County
Travis R. McGarvey

Putnam County
Michael L. Lenhart

Van Wert County
Kyle J. Wendel

Wyandot County
Michael B. Kohl

DISTRICT 2

Fulton County
Frank T. Onweller

Henry County
Timothy Schumm

Lucas County
Mike Pniewski

Ottawa County
Ronald P. Lajti, Jr.

Sandusky County
Carlos Baez

Seneca County
Mark R. Zimmerman

Williams County
Todd J. Roth

Wood County
John M. Musteric

DISTRICT 3

Ashland County
Edward J. Meixner

Crawford County
Mark E. Baker

Erie County
John "Jack" D. Farschman

Huron County
Lee E. Tansey

Lorain County
Ken Carney

Medina County
Andrew J. Conrad

Richland County
Adam M. Gove

Wayne County
Scott A. Miller

DISTRICT 4

Ashtabula County
Timothy T. Martin

Mahoning County
Patrick T. Ginnetti

Portage County
Larry D. Jenkins, Jr.

Stark County
Keith A. Bennett

Summit County
Alan Brubaker

Trumbull County
Randy L. Smith

DISTRICT 5

Coshocton County
Frederick T. Wachtel

Fairfield County
Jeremiah D. Upp

Madison County
Bryan D. Dhume

Guernsey County
Paul E. Sherry

Marion County
Bradley K. Irons

Knox County
Cameron Keaton

Morrow County
Bart Dennison

Licking County
Jared N. Knerr

Pickaway County
Sterlin C. "Chris" Mullins

Muskingum County
Mark J. Eicher

Union County
Jeff Stauch

Perry County
Kenton C. Cannon

DISTRICT 7

DISTRICT 6

Auglaize County
Andrew Baumer

Delaware County
Chris E. Bauserman

Champaign County
Stephen McCall

Fayette County
Steven G. Luebbe

Clark County
Johnathan A. Burr

Franklin County
Brad Foster

Darke County
James P. Surber



Logan County
Scott C. Coleman

Hamilton County
Eric Beck

Mercer County
James “Jim” A. Wiechart

Preble County
R. Kyle Cross

Miami County
Paul P. Huelskamp

Warren County
Neil F. Tunison

Montgomery County
Paul W. Gruner

DISTRICT 9

Shelby County
Robert B. Geuy

Adams County
Lee Pertuset

DISTRICT 8

Brown County
Todd Cluxton

Butler County
Gregory J. Wilkens

Highland County
Chris Fauber

Clermont County
Jeremy P. Evans

Jackson County
Melissa B. Miller

Clinton County
Jeffrey B. Linkous

Lawrence County
Patrick D. Leighty

Greene County
Stephanie Ann Goff

Pike County
Denny T. Salisbury



Ross County
Charles R. Ortman

Scioto County
Darren LeBrun

DISTRICT 10

Athens County
Rex Jeffrey Maiden

Gallia County
Brett A. Boothe

Hocking County
Douglas L. Dillon

Meigs County
Eugene Triplett

Monroe County
Amy M. Zwick

Morgan County
Stevan Hook

Noble County
Todd A. Coss

Vinton County
Roy A. DePue

Washington County
Roger E. Wright

DISTRICT 11

Belmont County
Terry Lively

Carroll County
Brian J. Wise

Columbiana County
Bert Dawson

Harrison County
Del E. George

Holmes County
Christopher R. Young

Jefferson County
James F. Branagan

Tuscarawas County
Douglas N. Bachman

DISTRICT 12

Cuyahoga County
Dave Ray

Geauga County
Joe Cattell

Lake County
James R. Gills

**Serving Ohio Counties
for 60 Years**

ms consultants, inc.
engineers, architects, planners

msconsultants.com | [f](#) [t](#) [in](#)

County Engineers

(Eff. date is when first held current office of County Engineer)

The County Engineers Association of Ohio (CEAO) began in 1879 as the Association of County Surveyors of Ohio. Since then, it has evolved into the association as we know it today, representing all Ohio's County Engineers. CEAO has worked to unify its members in their goal to provide the highest quality transportation, drainage, surveying, and land record keeping services. From the safe and efficient movement of people, goods, and services to continuing land development needs, we are striving to construct solutions for many of the challenges to Ohio's local infrastructure.

ADAMS

75 Willow Drive, West Union, OH 45693-9670

Phone: 937-544-2943

email: lee.pertuset@engineer.adamscountyoh.gov

District 9, West Union, 588 Sq. Miles, Pop. 27,564



Education: University of Cincinnati, Class of 2006

Previous Experience: Adams County Deputy Engineer June 2006-December 2020

Spouse: Kristen Pertuset

Lee Pertuset, P.E., P.S., Eff. 1/2021

Adam Carroll, P.E., Chief Deputy Engineer 937-544-2943
adam.carroll@engineer.adamscountyoh.gov

Jennifer Grooms, Resource Administrator 937-544-2943
jennifer.grooms@engineer.adamscountyoh.gov

Craig Davis, Operations Superintendent 937-544-2943

Amy Simpson, Tax Map/GIS Administrator 937-544-5055
amy.simpson@engineer.adamscountyoh.gov

ALLEN

1501 N. Sugar St., Lima, OH 45801-3136
Phone: 419-228-3196 ext. 7104 Fax: 419-227-2920
email: brhodes@allencountyohio.com
www.allencountyohengineer.com

District 1, Lima, 405 Sq. Miles, Pop. 102,808

Education: Ohio Northern University, B.S. '95
Civil Engineering

Previous Experience: Assistant County Engineer, Warren County Engineer's Office, '95-'96; Transportation Engineer Intern, ODOT District One, '96-'97; Assistant Bridge Engineer, Allen County Engineer's Office, '97-'00; Bridge Engineer, '00-'09; Chief Deputy/Bridge Engineer, '09-'15.



Spouse: Julie Rhodes

Brion E. Rhodes, P.E., P.S., Eff. 8/2015

Douglas Karhoff, P.E., Bridge Engineer
dkarhoff@allencountyohio.com419-228-3196 ext. 7108
Mark Droll, P.E., Operations Engineer
mdroll@allencountyohio.com419-228-3196 ext. 7120
Joe Gearing, Drainage Engineer
jgearing@allencountyohio.com419-228-3196 ext. 7106
Chad Scott, Tax Map Supervisor
cscott@allencountyohio.com419-228-3700 ext. 8746
Mike Stechschulte, Bridge Superintendent
mstechschulte@allencountyohio.com.....419-228-3196 ext. 7116
Daren Leis, Road Superintendent
dleis@allencountyohio.com419-228-3196 ext. 7122
Brandon Holmes, Equipment Superintendent
bholmes@allencountyohio.com419-228-3196 ext. 7123

The office of the County Surveyor was established by the first General Assembly following admission of Ohio to the Union in 1803. In 1831, the legislature voted to make the office elective because of the increased responsibilities it entailed. The law stated that a County Surveyor would serve a term of three years, "if he so long behaved well and until his successor be elected and qualified." Legislation in 1915 established a salary and the responsibility of also being Resident Engineer for the State Highway Department. In 1928, the term of office was lengthened from three years to four. Then, on August 30, 1935 the title was changed to "County Engineer", establishing the qualifications that each officeholder would be a licensed professional engineer and professional surveyor.

ASHLAND

1511 Cleveland Avenue, Ashland, OH 44805-1972

Phone: 419-282-4281 FAX: 419-282-4328

email: engineer@ashlandcounty.org

www.ashlandcounty.org/engineer

District 3, Ashland, 424 Sq. Miles, Pop. 52,658

Education: Virginia Tech, BSCE



Previous Experience: Assistant Ashland County Engineer 1990-2000; City Engineer/Service Director, City of Rittman, OH 1989-90; Structural Engineer, Bechtel Power Corp., Gaithersburg, MD, 1981-89.

Spouse: Susan Meixner

Edward J. Meixner, P.E., P.S., Eff. 3/1/2000

Ryan Athy, P.E., P.S., Assistant Engineer 419-282-4281
rathy@ashlandcounty.org

Kelly Hickey, Administrative Assistant 419-282-4281
khickey@ashlandcounty.org

Becky Schaly, Engineering Assistant 419-282-4281
bschaly@ashlandcounty.org

LynAnn Spoerr, Tax Map Supervisor 419-282-4343
taxmap@ashlandcounty.org

Mike Weber, Highway Superintendent..... 419-281-2021

Kevin Pasho, Bridge Engineer 419-281-4281


Seamless
All-In-One
Solutions
fishbeck




fishbeck.com

A culture of
accountability

**We
Own
It.®**



CEC | Columbus
250 W. Old Wilson Bridge Rd.
Suite 250
Worthington, OH 43085
614.540.6633
cecinc.com/columbus



Civil & Environmental Consultants, Inc.

ASHTABULA

186 E. Satin Street, Jefferson, OH 44047-1419
Phone: 440-576-3707 FAX: 440-576-3719
www.ashtabulacountyengineer.org

District 4, Jefferson, 741 Sq. Miles, Pop. 97,869



Education: Youngstown State University,
BECE

Previous Experience: Ashtabula County Engi-
neer's Office; 8 years Design Engineer.

Timothy T. Martin, P.E., P.S., Eff. 3/2002

Thomas G. Partridge, Jr., P.E., P.S., Chief Deputy..... 440-576-3013
Randy Anslow, Bridge Engineer 440-576-3029
Dale McConnell, Civil Engineer 440-576-3046
Neal Stewart, Engineering Tech I..... 440-576-3035
Amir Garakouei, Maintenance Superintendent 440-576-4039
Tracey Hurst, Administrative Assistant..... 440-576-3709
Michael O. Shadle, Survey Review 440-576-3710
Dylan, Iosue & Associates 216-765-1901
Justin Cline, P.E., P.S. Engineering Manager..... 440-576-3051
Hayden Mendik, Civil Engineer 1 440-576-3048
Tyler Matriscano, Surveyor Tech..... 440-576-3712
Sandy Leary, Secretary/Clerk..... 440-576-3707
Kevin Strauser, Surveyor 440-576-3028
Denise Hodges, Tax Map Specialist 440-576-3691
Marie Kuhar, Tax Map Assistant 440-576-3708

ATHENS

16000 Canaanville Road, Athens, OH 45701
Phone: 740-593-5514 FAX: 740-592-4616

email: jmaiden@athensoh.org • www.athenscountyengineer.org

District 10, Athens, 484 Sq. Miles, Pop. 62,933



Education: Ohio University, BSCE

Previous Experience: President RJM Engineer-
ing Co. Inc., 1993-2012; Vice President, Maiden
& Jenkins Construction Co., 1982-1993.

Rex Jeffrey Maiden, P.E., P.S., Eff. 1/2013

Donnie Stevens, P.E., P.S., Chief Deputy Engineer
dstevens@athensoh.org 740-592-0170
Andrea Frensch, Business Manager
afrensch@athensoh.org 740-593-5514
Cody Hill, Road Superintendent
ehill@athensoh.org 740-592-0173
Jay Pickell, Maintenance Superintendent
cpickell@athensoh.org 740-592-0172
John Brunton, Bridge Supervisor
jbrunton@athensoh.org 740-593-8347
Brandon Williams, CAD/GIS Technician
bwilliams@athensoh.org 740-592-0169

AUGLAIZE

1014 S. Blackhoof Street, P.O. Box 59,
Wapakoneta, OH 45895-0059

Phone: 419-739-6520 FAX: 419-739-6521

email: abaumer@auglaizecounty.org

www2.auglaizecounty.org

District 7, Wapakoneta, 394 Sq. Miles, Pop. 46,282



Education: Ohio Northern University, BSCE

Previous Experience: Asst. Bridge Engineer, Auglaize County, 2012-2016; Bridge Engineer, Asst. County Engineer, Auglaize County, 2016-2021.

Spouse: Ellen Baumer

Andrew Baumer, P.E., P.S., Eff. 8/2021

Ross Wuebker, PE, PS, Assistant County Engineer

rwuebker@auglaizecounty.org 419-739-6520

Toby Lee, Operations Superintendent

tlee@auglaizecounty.org 419-739-6520

Julie Schneider, Administrative Assistant

jschneider@auglaizecounty.org 419-739-6520

Mary Lou Hume, Administrative Assistant

mhume@auglaizecounty.org 419-739-6520

Kevin Snider, Road Superintendent

kevin.snider@auglaizecounty.org 419-739-6520

Jesse Hein, Bridge Superintendent

jhein@auglaizecounty.org 419-739-6520

BELMONT

101 W. Main St., Courthouse, St. Clairsville, OH 43950-1260

Phone: 740-699-2160 FAX: 740-695-8894

email engineer: tlively@belmontcountyengineer.com

email office: scrist@belmontcountyengineer.com

email G.I.S. office: aatkins@belcogis.com

www.BelmontCountyEngineer.com

www.BelcoGIS.com

District 11, St. Clairsville, 534 Sq. Miles, Pop. 67,077

Education: Stark Technical College,
AASCKET; The Ohio State University, BSCE



Previous Experience: Surveyor's Assistant, Ohio Power Co., 1985-87; Intern/Private Sector Engineering, 1987-1996; Assistant City Engineer, City of Delaware, 1996-2007; Assistant City Engineer/City Engineer, City of Marion, 2007-2014; Deputy Engineer, Belmont County Engineer's Office, 2014-16.

Terry Lively, P.E., P.S., Eff. 1/2/2017

Daniel E. Boltz, P.E., Assistant Engineer 740-699-2160

Keith Luyster, Highway Supervisor 740-695-1580

Ed Bond, Bridge Supervisor 740-695-2494

Dwayne Leach, Highway Supervisor 740-695-1580

Anthony Atkins, G.I.S. Director 740-526-9306

Stephany Crist, Office Manager 740-699-2160

Shereza O'Hara, Account Clerk 740-699-2160

BROWN

25 Veteran Blvd., Georgetown, OH 45121
Phone: 937-378-6456 FAX: 937-378-4175
email: eng@browncountyengineer.org

District 9, Georgetown, 493 Sq. Miles, Pop. 43,694



Education: The Ohio State University, BSCE

Previous Experience: Deputy Engineer 4 yrs., 8 mo.; part-time/co-op 6 yrs. 8 mo.

Spouse: Rachel Cluxton

Todd Cluxton, P.E., P.S., Eff. 3/05/2007

Lisa Berry, Account Clerk 937-378-6456
Stephanie Willey, Administrative Assistant 937-378-6456
Kelley Campbell, Bridge Foreman 937-378-5746
Bob Neal, Road Foreman 937-378-5746
Dave Watson, Culvert Foreman..... 937-378-6456
Adam Monceaux, Shop Foreman 937-378-6746
Scott Moore, Safety Manager/Bridge Inspector 937-378-6456
Mitchell Hastings, P.S., GIS Coordinator 937-378-6456
Dylan Fender, Township Projects/Permits..... 937-378-6456
Teresa Renshaw, Tax Map..... 937-378-3494

BUTLER

1921 Fairgrove Avenue, Hamilton, OH 45011-1999
Phone: 513-867-5744 FAX: 513-867-5849
email: wilkeng@bceo.org
www.bceo.org

District 8, Hamilton, 469 Sq. Miles, Pop. 387,830



Education: B.S. Degree in Engineering,
Miami University

Previous Experience: Executive Director, Butler
County Transportation Improvement District,
2 yrs., Development Services Manager Butler
County Engineer's Office, 25 yrs.

Spouse: Pam Wilkens

Gregory J. Wilkens, P.E., P.S., Eff. 1/1/2001

Dale Schwieterman, P.E., P.S., Chief Deputy Engineer
schwietermand@bceo.org 513-785-4110
Scott Bressler, Operations Deputy
bresslers@bceo.org 513-785-4128
David Quimby, P.E., S.I., Construction Deputy
quimbyd@bceo.org 513-785-4112
Kar Singh, P.E., P.S., Engineering/Tax Map/GIS Manager
singhk@bceo.org 513-785-4150

CARROLL

200 Kensington Road N.E., Carrollton, OH 44615-9402

Phone: 330-627-4110 FAX: 330-627-3661

email: bwise@carrollcountyohio.us

District 11, Carrollton, 388.59 Sq. Miles, Pop. 26,866

Education: University of Akron, BSCE

Previous Experience: Project Engineer, A&J Cinson Construction, 1990-2010; Wise Engineering & Surveying, 2004-2012; Design Engineer, Civil Design Associates, 1997-2000; Environmental Engineer, Summit County Dept. of Environmental Services, 2000-2002; Highway Maintenance Engineer, Stark County Engineer, 2002-2012; Chief Deputy Engineer, Carroll County Engineer, 2012-2013.

Spouse: Alese Wise



Brian J. Wise, P.E., P.S., Eff. 1/2013

Chris Kiehl, Deputy Administrator	330-627-4110
Diane Wirkner, Map Office.....	330-627-7010
Mike Bryan, General Superintendent.....	330-627-4110
Ryan Roberts, Fleet Supervisor.....	330-627-4110
Dave Seck, Supervisor.....	330-627-4110
Rodney Days, Supervisor	330-627-4110
Allan Furbee, Supervisor.....	330-627-4110
Tracy Flanagan, Administrative Secretary	330-627-4110
Janice Leggett, Administrative Assistant	330-627-4110

CHAMPAIGN

428 Beech Street, Urbana, OH 43078-0452

Phone: 937-653-4848 FAX: 937-653-3172

email: engineer@co.champaign.oh.us

http://engineer.co.champaign.oh.us

District 7, Urbana, 432 Sq. Miles, Pop. 38,678

Education: Ohio Northern University, B.S. Civil Engineering

Previous Experience: Chief Deputy Engineer, Champaign County, 1997-2012; Deputy Engineer, Champaign County, 1991-1996.

Spouse: Jenniffer L. McCall



Stephen McCall, P.E., P.S., Eff. 1/1/2013

Mark Mowrey, P.E., Chief Deputy Engineer	937-484-1978
Jami Hackworth, Administrative Secretary	937-484-1972
Danny Boggs, Superintendent	937-484-1980
Beau Graham, Equipment Maint. Supervisor	937-484-1985
James Landenburg, GIS/Permit Coordinator	937-484-1977
Philip Hisnay, Tax Map Technician.....	937-484-1974
Rachel Ward, Tax Map Technician	937-484-1987
Sara Gross, Assistant Secretary	937-653-4848

CLARK

4075 Laybourne Road, Springfield, OH 45505-3613

Phone: 937-521-1800 FAX: 937-328-2473

email: engineer@clarkcountyohio.gov

www.clarkcountyohio.gov

District 7, Springfield, 412 Sq. Miles, Pop. 136,032



Education: Clark State Community College,
Ohio University, Assoc./BSCE

Previous Experience: Chief Design Engineer,
Hoppes Engineering and Surveying Company,
15 years.

Johnathan A. Burr, P.E., P.S., Eff. 1/5/2009

Paul W. DeButy, P.E., P.S., Chief Deputy 937-521-1802
pdebuty@clarkcountyohio.gov

Thomas Bender, P.E., Design/Bridge Engineer 937-521-1805
tbender@clarkcountyohio.gov

Richard Hankison, P.S., Tax Map Supervisor 937-521-1819
rhankison@clarkcountyohio.gov

Greg Fitzsimmons, Maintenance Superintendent 937-521-1804
gfitzsimmons@clarkcountyohio.gov

Pamela Fulton, Office Manager 937-521-1821
pfulton@clarkcountyohio.gov

CLERMONT

2381 Clermont Center Drive, Batavia, OH 45103-1959

Phone: 513-732-8857 FAX: 513-732-8875

email: jpevans@clermontcountyohio.gov

www.clermontengineer.org

District 8, Batavia, 452 Sq. Miles, Pop. 207,650



Education: University of Cincinnati, BSCE

Previous Experience: Traffic Engineer, Clermont County Engineer's Office, 2005-2019;
TEC Engineering, 2003-2005; Parsons Brinckerhoff Ohio, 1999-2003.

Spouse: Adele Evans

Jeremy P. Evans, P.E., P.S., Eff. 8/2019

Sukie Scheetz, Senior Administrator 513-732-8880

Sandy West, Administrative Assistant 513-732-8092

Doug Royer, P.E., Deputy Engineer 513-732-8885

Craig Risner, P.S., Deputy Surveyor 513-732-8876

Amanda Beiting, P.E., Senior Engineer 513-732-8874

Jeff Grant, Tax Map 513-732-7372

Jessica Hornsby, Fiscal Officer 513-732-8858

Jeff Smith, Road Superintendent 513-732-8070

CLINTON

1326 Fife Avenue, Wilmington, OH 45177-2462
Phone: 937-382-2078 FAX: 937-382-5318
email: jlinkous@clintoncountyengineer.org
www.clintoncountyengineer.org

District 8, Wilmington, 410 Sq. Miles, Pop. 42,046



Education: University of Cincinnati, BSCE

Previous Experience: Hasselbring, Duane & Associates (Lebanon, OH) 1977-1978. ODOT District 8 (Lebanon) 1979. Clinton County Chief Deputy Engineer 1980-2008.

Spouse: Cathy Linkous

Jeffrey B. Linkous, P.E., P.S., Eff. 01/2009

- Adam Fricke, P.E., P.S., Deputy Engineer 937-382-2078
africke@clintoncountyengineer.org
- Adam Wolfe, E.I., S.I., Assistant Engineer 937-382-2078
awolfe@clintoncountyengineer.org
- Griffin Bieller, E.I., Assistant Engineer 937-382-2078
gbieller@clintoncountyengineer.org
- Brenda Godlove, Administrative Assistant 937-382-2078
bgodlove@clintoncountyengineer.org
- Gary Smith, Engineering Technician/Permits 937-382-2078
gsmith@clintoncountyengineer.org
- Nick Smith, Highway Superintendent 937-382 2303
nsmith@clintoncountyengineer.org
- Cassidy Slocum, Administrative Assistant 937-382-2303
cslocum@clintoncountyengineer.org
- Mike Runk, Maintenance Superintendent 937-382-2303
- Joe Merritt, GIS Manager 937-382-0035
jmerritt@clintoncountyengineer.org
- Darrell Powell, Tax Map Supervisor 937-382-4335
dpowell@clintoncountyengineer.org

DBE | SBE | LDBE | EBE
Maumee • Dublin • Independence • Port Clinton • Wauseon

Transportation, Facility/Site Development, Survey,
Traffic/Safety, Construction Services

COLUMBIANA

235 S. Market, Lisbon, OH 44432-1297

Phone: 330-424-1740 FAX: 330-424-0259

email: engineer@cceng.org

www.cceng.org

District 11, Lisbon, 534 Sq. Miles, Pop. 102,331

Education: The Ohio State University,
Youngstown State University, BS (Engineering),
Carnegie Mellon University, MSCE



Previous Experience: Civil Engineer, Wheeling-Pittsburgh Steel Corp. (Wheeling, WV) 1964-66; Superintendent of Construction & Maintenance, H.K. Porter Corp. (Pittsburgh, PA) 1966-69.

Spouse: Deb Dawson

Bert Dawson, P.E., P.S., Eff. 1/1969
(also serves as County Sanitary Engineer)

Mary Browne, P.E., Chief Design Engineer 330-424-1459 x290
Troy Graft, P.E., Chief Sanitary Engineer 330-424-1459 x294
Corey Griffith, P.E., Assistant Inspector &
Assistant Design Engineer 330-424-1459 x299
David Hutchman, P.E., Chief Inspector..... 330-424-1470 x103
William Helscel, P.E., P.S.,
Chief Highway Maintenance Engineer..... 330-424-1740 x109
David Long, P.S., Chief Surveyor 330-424-1459 x297
Jason McDevitt, P.E., Design Engineer..... 330-424-1459 x288
Jackie Shreeve, Office Manager..... 330-424-1740 x111
David Esterly, Mechanical Supt. 330-424-3519 x225
Sherry Wolfe, Administrative Asst..... 330-424-3519 x221
Brad Bosley, Assistant Design Engineer..... 330-424-1459 x291
Emma Minamy, E.I., Assistant Design
Engineer..... 330-424-1459 x 289
Denise Buttermore, Clerk..... 330-424-1740 x118

COSHOCTON

23194 CR 621, Coshocton, OH 43812-1594
Phone: 740-622-2135 FAX: 740-623-6512
email: fredwachtel@coshoctoncounty.net

District 5, Coshocton, 562 Sq. Miles, Pop. 36,621

Education: The Ohio State University, BSCE & BS Surveying

Previous Experience: Civil Engineer, Columbus and Southern Ohio Electric, 1979-81; Civil Engineer, Columbia Gas of Ohio, 1981-84; Operations Engineer, Columbia Gas of Ohio, 1984-87; Division Plant Supervisor & Engineer, Columbia Gas of Ohio, 1987-90; Senior Environmental Engineer, Central Ohio Coal Company, 1990-92.

Spouse: Sharon Wachtel



Frederick T. Wachtel, P.E., P.S., Eff. 1/1993

Joshua Kempf, P.E., S.I., Deputy County Engineer

joshkempf@coshoctoncounty.net 740-622-2135

Amy Ehasz, Administrative Assistant

amyehasz@coshoctoncounty.net 740-622-2135

Duane McElhaney, Manager of Operations

duanemcelhaney@coshoctoncounty.net 740-622-2135

Scott Frazee, Superintendent

scottfrazee@coshoctoncounty.net 740-622-2135

Matt Shannon, Administrative Assistant, Permits & Construction

mattshannon@coshoctoncounty.net 740-622-2135

Darlene Art, Administrative Assistant

darleneart@coshoctoncounty.net 740-622-2135

John Hardesty, Administrative Assistant, H.R. Liaison

johnhardesty@coshoctoncounty.net 740-622-2135

Jona Lee Mikesell, GIS Technician

jonaleemikesell@coshoctoncounty.net 740-622-3184

Jimmie McMillan, GIS Specialist

jimmiecmillan@coshoctoncounty.net 740-294-7465

CRAWFORD

815 Whetstone Street, Bucyrus, OH 44820
Phone: 419-562-7731 FAX: 419-563-0157
email: markb@crawford-co.org
www.crawfordcountyengineer.com

District 3, Bucyrus, 404 Sq. Miles, Pop. 41,939



Education: Bowling Green State University, BSBA, 1984; University of Dayton, MBA, 1989; University of Cincinnati, BSCE, 1997

Previous Experience: Deputy Engineer, Crawford County, 2002-2012; MKC Associates, 1997-2002; NCR Corporation, 1984-1993.

Mark E. Baker, P.E., P.S., Eff. 1/7/2013

Jason Long, Drainage Technician/Bridge Inspector

jasonl@crawford-co.org..... 419-563-1524

Heath Gwartz, E.I., S.I.

heathg@crawford-co.org 419-563-1530

Travis Koschnick, Highway Superintendent

travisk@crawford-co.org 419-562-2811

Mike Schimpf, Tax Map Technician

mikes@crawford-co.org 419-563-1530

CUYAHOGA

2079 E. Ninth Street, Cleveland, Ohio 44115
Phone: 216-348-3848 FAX: 216-348-3896
email: dray@cuyahogacounty.us
<https://cuyahogacounty.gov/publicworks/>

District 12, Cleveland, 456 Sq. Miles, Pop. 1,263,667



Education: Youngstown State University, Bachelor's Degree Civil Engineering, 1986; Cleveland State University, MBA, 2004

Previous Experience: HDR, 2021; JMT, 2016 - 2021; ODOT District 5 Deputy Director, 2013 - 2016; ODOT Districts 4, 9, 12, and Central Office 1986 - 2013

Dave Ray, P.E., P.S., Eff. 10/12/2021

Michael Dever, M.P.A, Director of Public Works..... 216-348-3822

Tom Sotak P.E., Chief Deputy Engineering..... 216-698-2534

Nichole English, P.E., Planning & Programming

Administrator..... 216-348-3861

Christopher George, P.E., Chief Section Engineer -

Highway Design..... 216-348-3820

Michael Tworzydlo, P.E., Chief Section Engineer -

Construction 216-348-3895

Laura A. Weber P.E., Chief Section Engineer, Sanitary ... 216-443-8205

Vacant, Chief Surveyor, Survey/Tax Map.....

Jim (Demetrios) Hazimihalis, P.E., MSCE Chief Section Engineer,

Bridge Inspection and Maintenance..... 216-348-3880

Bryan Hitch, Deputy Chief of Maintenance..... 216-443-8219

DARKE

504 S. Broadway, Courthouse, Greenville, OH 45331-1994

Phone: 937-547-7375 FAX: 937-547-7364

email: engineerdarke@gmail.com

District 7, Greenville, 605 Sq. Miles, Pop. 51,839



Education: The Ohio State University, BS

Previous Experience: Barrett, Cargo, Withers & Associates, Ltd. (Chillicothe, OH) 1974-77;
Ryan Surveying (Hillsboro, OH) 1971-74.

James P. Surber, P.E., P.S., Eff. 4/1977

Aloysius Rahm, Deputy Engineer 937-547-7375
Deidre Frech, Tax Map, Clerk 937-547-7375
Wendy Hall, Tax Map, Clerk 937-547-7375
Max Guillozet, Road Superintendent 937-548-1915
Chris Erisman, Assistant Road Superintendent 937-548-1915
Nick Thomas, Bridge Superintendent..... 937-548-1915

DEFIANCE

510 Court Street, Suite 201, Defiance, OH 43512-2166

Phone: 419-782-4751 FAX: 419-782-3031

email: wschlatter@defiancecounty.oh.gov

District 1, Defiance, 412 Sq. Miles, Pop. 38,329



Education: University of Akron, BSCE

Previous Experience: Deputy Engineer, Defiance County, 10 years.

Spouse: Cindy Schlatter

Warren J. Schlatter, P.E., P.S., Eff. 1/3/2005

Bridgette Miller, Administrative Assistant 419-782-4751
Jeff Timbrook, Operations Deputy 419-658-2309
Amelia Ferguson, Accounting 419-782-4751
Mike Weihrauch, Design Tech/CAD Drafter 419-782-4751
Mary Willitzer, Tax Mapping 419-782-4751

DELAWARE

1610 State Route 521, P.O. Box 8006 Delaware, OH 43015

Phone: 740-833-2400 FAX: 740-833-2399

email: cbauserman@co.delaware.oh.us

www.co.delaware.oh.us

District 6, Delaware, 450 Sq. Miles, Pop. 211,121



Education: Ohio Northern, BSCE

Previous Experience: Chief Deputy County Engineer, Delaware County 7 yrs.; Design Engineer, Fleming, Page, Stolte, Inc., 4 yrs.; Project Engineer, Kokosing Construction Company, 1 yr.

Chris E. Bauserman, P.E., P.S., Eff. 3/1/1996

Robert M. Riley, P.E., P.S., Chief Deputy Engineer 740-833-2431
Ryan Mraz, E.I., Deputy Design Engineer 740-833-2425
Lee Bodnar, Administrator 740-833-2432
Tiffany Brinkmoeller, Administrative Assistant 740-833-2402
Michelle Strohl 740-833-2401
William Stillions, Map Department Supervisor 740-833-2450
Operations Manager 740-833-2415
Mike Love, P.E., Deputy Development Engineer 740-833-2428
Doug Riedel, P.E., Senior Project Engineer 740-833-2428
Dan Jennings, Chief Inspector 740-833-2441

ERIE

2700 Columbus Avenue, Sandusky, OH 44870-5581

Phone: 419-627-7714 FAX: 419-625-9622

email: eceo@eriecounty.oh.gov

District 3, Sandusky, 264 Sq. Miles, Pop. 75,560

Education: Ohio Northern University, BSCE

Previous Experience: Sr. Project Manager, Barton Malow Construction Services, 1990-1996; Vice President, Construction, Feick Contractors, 1986-1989; Construction Engineer, Bechtel Civil, 1983-1985; Senior Construction Manager, Bay Construction, 1965-1981; Project Engineer, J. A. Jones Construction, 1961-1964.



Spouse: Judie J. Farschman

John "Jack" D. Farschman, P.E., P.S., Eff. 1/6/1997

Tim A. Lloyd, P.E., Deputy Engineer 419-627-7712
Matt Rogers, P.E., Project/Design Engineer 419-627-7711
Michael Farrell, P.E., P.S., Project/Design Engineer 419-627-7715
Denise M. Bellamy, Administrative Assistant 419-627-7690
Cathy Griggs, Account Clerk/Secretary 419-627-7710
Darrell Holbrook, Equipment Maintenance Supt. 419-627-7717
Jeff David, Field Superintendent 419-627-7710
Eric Schippel, Field Superintendent 419-627-7710

FAIRFIELD

3026 W. Fair Ave., Lancaster, Ohio 43130-8993

Phone: 740-652-2300 FAX: 740-687-7055

email: engineer@fairfieldcountyohio.gov

www.co.fairfield.oh.us/Engineer

District 5, Lancaster, 505 Sq. Miles, Pop. 157,622

Education: Ohio University Athens, BSCE

Previous Experience: 2003-2012: Lockwood Lanier Mathias & Noland, Inc., Project Engineer & Field Supervisor. Commercial & Residential Development Design & Project Mgmt., Municipal & Small Government Consulting, Design & Project Development; 1997-2003: George A. Mara Engineering, Inc., Project Engineer, Municipal, Commercial, Residential; Roadway, Utilities & Infrastructure Design & Layout.

Spouse: Stacy M. Upp



Jeremiah D. Upp, P.E., P.S., Eff. 1/2012

Eric McCrady, P.E., Deputy Engineer 740-652-2300
eric.mccrady@fairfieldcountyohio.gov

Bill Maravy, P.E., Deputy Engineer 740-652-2300
bill.maravy@fairfieldcountyohio.gov

Jeff Camechis, Operations Administrator 740-652-2300
jeff.camechis@fairfieldcountyohio.gov

Cheryl Downour, Deputy Director, Finance & Administrative & Technical Services
cheryl.downour@fairfieldcountyohio.gov 740-652-2300

Todd May, E.I., Subdivision Engineer 740-652-2300
todd.may@fairfieldcountyohio.gov

Jason Grubb, Deputy Director, Operations 740-652-2300
jason.grubb@fairfieldcountyohio.gov

Tim Anderson, Road & Bridge Inspector 740-652-2300
tim.anderson@fairfieldcountyohio.gov

Mitch Noland, P.E., S.I., Deputy Engineer 740-652-2300
mitch.noland@fairfieldcountyohio.gov

Sean Meachem, Superintendent 740-652-2300
sean.meachem@fairfieldcountyohio.gov

FAYETTE

1600 Robinson Road, Washington C.H., OH 43160-9205

Phone: 740-335-1541 FAX: 740-333-3573

email: steve.luebbe@fayette-co-oh.com

District 6, Washington C.H., 406 Sq. Miles, Pop. 28,897



Education: University of Cincinnati, BSCE

Previous Experience: Project Manager/Engineer
JMA Consultants, Cincinnati, OH 1996-1998;
Deputy Engineer, Butler County, 1995-1996;
Design Engineer, Butler County, 1990-1995.

Spouse: Jenny Luebbe

Steven G. Luebbe, P.E., P.S., Eff. 10/1998

Jason Little, P.E., P.S., Deputy Engineer 740-335-1541
jason.little@fayette-co-oh.com
Katey Schleich, Administrative Assistant 740-335-1541
katey.schleich@fayette-co-oh.com
Morgan Pentzer, Tax Map Supervisor 740-335-2334
morgan.pentzer@fayette-co-oh.com
Myron Miller, Safety Coordinator 740-335-1541
myron.miller@fayette-co-oh.com
Alan Stanley, Highway Superintendent 740-333-3556
alan.stanley@fayette-co-oh.com
David Batson, Engineering Technician 740-335-1541
david.batson@fayette-co-oh.com
Jessica Leisure, Tax Map Clerk 740-335-2334
jessica.leisure@fayette-co-oh.com



Since 1956, Asphalt Materials has been continually focused on the asphalt business. A core strength of our business is the formulation, manufacturing, and R&D of asphalt binders and emulsions. Our Asphalt Companies continually supply high quality products and services around the United States, allowing us to excel in pavement preservation techniques and construction services.

 **Oregon, OH**
419-693-0626

 **Marietta, OH**
740-374-5100

 **Edison, OH**
419-947-2227

 **Columbus, OH**
614-274-6767

www.asphalt-materials.com

FRANKLIN

970 Dublin Road, Columbus, Ohio 43215-1169

Phone: 614-525-3043

email office: fracoeng@franklincountyengineer.org
email engineer: bfoster@franklincountyengineer.org
www.franklincountyengineer.org

District 6, Columbus, 544 Sq. Miles, Pop. 1,321,820



Education: The Ohio State University, BSCE

Previous Experience: Chief Deputy Engineer of Operations 2022 to 2024; Highway Design Engineer 2018 to 2022; Project Engineer 2002 to 2017.

Spouse: Jamie Foster

Brad Foster, P.E., P.S., Eff. 2/2024

W. Fritz Crosier, P.E., Chief Deputy, Engineering 614-525-3080
Angela Phelps, Chief Human Resources Officer 614-525-3036
Brent Welch, Chief Financial Officer 614-525-3498
Ed Herrick, P.E., Bridge Engineer 614-525-2785
Tony Rettke, P.S., Director of Surveying & Tax Map .. 614-525-3050
Mike Andrako, P.E., Mobility Engineer 614-525-6158
Terri Pritchard, Executive Assistant 614-525-3905

FULTON

9120 County Road 14, Wauseon, OH 43567-9669

Phone: 419-335-3816 FAX: 419-335-1091

email: fonweller@fultoncountyoh.com

District 2, Wauseon, 407 Sq. Miles, Pop. 42,707



Education: Ohio Northern University, BSCE

Previous Experience: Project Engineer, T. R. Worline & Associates, Inc., Swanton, OH 1983-1996; Vice President, T. R. Worline & Assoc., Inc., 1996-2000.

Spouse: Teri Onweller

Frank T. Onweller, P.E., P.S., Eff. 1/6/1997

Rod Creager, P.E., P.S., Chief Deputy 419-335-3816
Lindsey Neifer, Fiscal Officer 419-335-3816
Mike Burkholder, Civil Technician 419-335-3816
Hayley Dockery, P.E., P.S., Engineer 419-335-3816
Justin Leu, P.S., Surveyor 419-335-3816
Aaron Dolph, Survey Technician 419-335-3816
Benjamin C. Rowland, P.E., S.I., Bridge Engineer 419-335-3816
Brooke Longnecker, Civil Technician/Permit
Coordinator 419-335-3816
BJ Abbott, Highway Superintendent 419-335-7052

GALLIA

1167 State Route 160, Gallipolis, OH 45631-8420

Phone: 740-446-4009

email office: galcoeng@galliacyengineer.com

email engineer: boothe@galliacyengineer.com

www.galliacyengineer.com

District 10, Gallipolis, 471 Sq. Miles, Pop. 29,369



Education: Ohio University, BSCE

Previous Experience: Assistant Bridge Engineer, ODOT D-9 2000-2007; Project Engineer, E. L. Robinson Engineering, 2008.

Spouse: Jennifer N. Boothe

Brett A. Boothe, P.E., P.S., Eff. 1/5/2009

Donny Stamper, Business Administrator 740-446-4009
Adam R. Edwards, Operations Manager 740-446-4009
Wesley Jarrell, GIS Technician 740-446-4009
Mark Wells, Highway Superintendent..... 740-446-4009
Mark Beaver, Assistant Superintendent..... 740-446-4009

GEAUGA

12665 Merritt Road, Chardon, OH 44024

Phone: 440-279-1800 FAX: 440-285-9864

email engineer: JCattell@geauga.oh.gov

email: gce@geauga.oh.gov

District 12, Chardon, 412 Sq. Miles, Pop. 95,408



Education: Cleveland State University, BSCE

Previous Experience: Geauga County Chief Deputy Engineer, 2011-2013; Geauga County Deputy Engineer, 2006-2011.

Joe Cattell, P.E., P.S., Eff. 1/2013

Andrew Haupt, P.E., P.S., Chief Deputy Engineer..... 440-279-1800
Katie Taylor, Administrator 440-279-1800
Shane Hajjar, P.E., Deputy Engineer 440-279-1800
Jacob Scotese, P.E., Deputy Engineer 440-279-1800
Rick Weikart, Highway Superintendent..... 440-279-1800

GREENE

615 Dayton-Xenia Road, Xenia, OH 45385-2697

Phone: 937-562-7500 FAX: 937-562-7510

**email: stephanie.goff@greencountyohio.gov
greencountyohio.gov/engineer**

District 8, Xenia, 415 Sq. Miles, Pop. 167,971

Education: University of Cincinnati, BSCE;
Wright State University, MBA.

Previous Experience: Senior Engineer/Project
Manager, Montgomery County Engineer's Of-
fice, Feb 2012-May 2019; Village Administrator,
Village of Jackson Center, Jan 2007-Dec 2011;
City Engineer, City of Fairborn, Aug 2003-Jan
2007; Assistant Engineer/Civil Engineer Intern/
Civil Engineer Co-op, Logan County Engineer's
Office, June 1991-Aug 2003.



Stephanie Ann Goff, P.E., P.S., Eff. 6/2019

Kelly Miller, Asst. Engineer.....	937-562-7512
Samantha Scarfo, Civil Engineer.....	937-562-7504
Eric Miller, Highway Superintendent.....	937-562-7514
Jerrold Pickens, Equipment Superintendent	937-562-7511
Justin Windsor, Traffic Foreman.....	937-562-7508
Mike Miller, Road Foreman.....	937-286-1886
Joe Green, Road Foreman.....	937-286-1888
Jake Ault, Bridge Foreman.....	937-286-2316
Chrisonna Anderson-Lutz, Special Projects Coord	937-562-7505
Paul Pratter, Construction Inspector	937-562-7500
Ryan Williams, Construction Inspector.....	937-562-7500
Shane Sanders, Construction Inspector	937-562-7500
Craig Gillespie, Bridge Inspector	937-562-7520
Casey Miller, Administrative Assistant.....	937-562-7500
Cynthia Tanner, Payroll/ Accts. Payable	937-562-7502
Kaitlyn McEnaney, Administrative Assistant	937-562-7533
Peggy Middleton, TaxMap Supervisor.....	937-562-5063
Jenny Schulz, Tax Map Technician.....	937-562-5062

GUERNSEY

62782 Bennett Avenue, Cambridge, OH 43725-9490

Phone: 740-432-2234 FAX: 740-432-7556

email: enr30@gceng.org

www.guernseycounty.org

District 5, Cambridge, 520 Sq. Miles, Pop. 38,542



Education: University of Dayton, BSCE; University of Cincinnati, MSEM

Previous Experience: City of Cambridge Engineer, 15 years.

Spouse: Ann M. Sherry

Paul E. Sherry, P.E., P.S., Eff. 1/2/2017

Jeff McConaughy, Deputy Engineer 740-432-2234
Morgan Bonnell, Office Manager 740-432-2234
Ed Glasgow, Bridge Supervisor 740-432-2234
Brian Stone, Road Superintendent 740-432-2234
Pat Saling, Foreman 740-432-2234
Jim Mercer, GIS Coordinator 740-432-9277
Shannon Leek, Map Office Coordinator 740-432-9277

TRANSYSTEMS

PROUDLY SUPPORTING OHIO COMMUNITIES

COLUMBUS | CLEVELAND | YOUNGSTOWN

transystems.com

Bridge Inspections, Analysis and Design
Corridor Planning
Environmental Investigations
NEPA Planning
Pedestrian and Bikeway Planning
Public Involvement
Railroad Planning and Design

Right-of-Way Acquisition
Roadway/Geometrics Planning and Design
Traffic Studies, Analysis and Design
Highway/Street Lighting Analysis and Design
Transit Planning and Design
Innovative Project Delivery

Columbus | 614.433.7800

Cleveland | 216.861.1780

HAMILTON

Cincinnati Address: 138 E. Court Street, Room 700,
County Administration Bldg., Cincinnati, OH 45202-1258
Phone: 513-946-4250 FAX: 513-946-4288

Burlington Address: 10480 Burlington Road, Cincinnati, OH 45231

Phone: 513-946-8900 FAX: 513-946-8901

email: Eric.Beck@hamilton-co.org

www.hamilton-co.org/engineer

District 8, Cincinnati, 414 Sq. Miles, Pop. 826,790

Education: Michigan Technological University,
BSCE

Previous Experience: Design Engineer for
James Winstead and Associates, 6 years;
Assistant Bridge Engineer, Assistant Planning
Engineer, Construction Engineer, and Deputy
Engineer for Field Operations for Hamilton
County, 30 years.

Spouse: Lea Beck



Eric J. Beck, P.E., P.S., Eff. 3/2020

Todd W. Long P.E., P.S., Chief Deputy

Engineer/Engineering Services 513-946-4254

Todd.Long@hamilton-co.org

James G. Hetzel, P.S., Deputy Surveyor 513-946-4263

James.Hetzel@hamilton-co.org

Lisa M. Doerger, Budget and Finance Director..... 513-946-4278

Lisa.Doerger@hamilton-co.org

Mark McGownd, Fleet Superintendent 513-946-8409

Mark.McGownd@hamilton-co.org

Jeff Newby, P.E., S.I., Traffic Engineer 513-946-8421

Jeff.Newby@hamilton-co.org

Todd Gadbury, P.E., S.I., Deputy Engineer 513-946-8445

Todd.Gadbury@hamilton-co.org

Charlene Vollhardt, Administrative Secretary and

Compliance Officer 513-946-8902

Charlene.Vollhardt@hamilton-co.org

HANCOCK

1900 Lima Avenue, Findlay, OH 45840

Phone: 419-422-7433

email: engineer@co.hancock.oh.us

www.co.hancock.oh.us/government-services/engineer

District 1, Findlay, 532 Sq. Miles, Pop. 74,920

Education: The Ohio State University, BSCE



Previous Experience: Woolpert Transportation Engineer, Lawrence County CAO Special Projects, CT Consultants Regional Manager, EL Robinson Engineering Regional Manager, Lawrence County Engineer, Hancock County Deputy Engineer.

Spouse: Ruth Cade

Douglas E. Cade, P.E., P.S., Eff. 12/2018

decade@co.hancock.oh.us

Kyle Parker, P.E., S.I., CFM, Deputy Engineer 419-422-7433
kdparker@co.hancock.oh.us

Eric Barnes, P.E., S.I., Deputy Engineer..... 419-424-7242
embarnes@co.hancock.oh.us

Mike Clark, Road Superintendent 419-424-7225
mrclark@co.hancock.oh.us

Ben Lindhorst, Permits, Signs and Roadway 419-424-7243
brlindhorst@co.hancock.oh.us

Hannah Brown, Administrative Assistant 419-424-7250
hmbrown@co.hancock.oh.us

HARDIN

1040 West Franklin Street, Kenton, OH 43326-9401

Phone: 419-674-2222

email: hardineng@hardincountyohio.gov

email engineer: luke.underwood@hardincountyohio.gov

District 1, Kenton, 467 Sq. Miles, Pop. 30,738

Education: Ohio Northern University, BSCE



Previous Experience: Peterman Associates (2001-02); Bischoff Miller & Assoc. (2002-04); Hardin County Assistant Engineer (2004-10); Hardin County Deputy Engineer (2010-21).

Spouse: Holli Underwood

Lucas J. Underwood, P.E., P.S., Eff. 1/4/2021

Trent Bass, P.E., S.I., Assistant Engineer 419-674-2222
trent.bass@hardincountyohio.gov

Brandy Herzog, Secretary 419-674-2222
hardineng@hardincountyohio.gov

Scott Sprang, Highway Supervisor 419-674-2222
scott.sprang@hardincountyohio.gov

Brian Flinn, Bridge Supervisor 419-674-2222
barney.flinn@hardincountyohio.gov

Luke Larrabee, Ditch Maintenance Supervisor 419-674-2222
luke.larrabee@hardincountyohio.gov

Randi Aisel, Ditch Maintenance Secretary 419-674-2225
randi.aisel@hardincountyohio.gov

HARRISON

1 Service Garage Road, Cadiz, OH 43907
Phone: 740-942-3086 FAX: 740-942-0041
email: dgeorge@harrisoncountyohio.org
www.harrisoncountyohio.org

District 11, Cadiz, 401 Sq. Miles, Pop. 14,623

Education: Ohio University, BSCE



Previous Experience: Ohio Department of Transportation Project Engineer, 2 years; City of Cambridge Engineer, 23 years; Guernsey County Engineer, 21 years; Nobel County Engineer, 2 1/2 years.

Spouse: Barb George

Del George, P.E., P.S., Eff. 10/2023

Randall Cunningham, Highway Superintendent 740-942-3086
Stuart White, Assistant Engineer 740-942-3086
Brandi Simmons, Office Manager 740-942-3086
Emily Rogers, Garage Clerk 740-942-3086
Astachea Thomas, Administrative Assistant 740-942-3086
Sheena Lewton, Tax Map Supervisor 740-942-8867

HENRY

1823 Oakwood Avenue, Napoleon, OH 43545-1747
Phone: 419-592-2976 FAX: 419-592-5508
email: hce@henrycountyohio.com
www.henrycountyengineer.com

District 2, Napoleon, 416 Sq. Miles, Pop. 27,618

Education: University of Toledo, BSCE, MSCE

Previous Experience: Highway Engineer & Administrative Assistant, Henry County Engineers Office (1/07-4/11); Director, Henry County Planning Commission (8/02-1/07); Project Manager & Engineer, The Mannik & Smith Group (9/96-8/02); Division of Solid Waste & Infectious Waste Management, Ohio EPA (2/94-9/96).



Spouse: Kim Schumm

Timothy Schumm, P.E., P.S., Eff. 4/2011

Phil Baden, Highway Superintendent 419-592-5946
Dan Jenkins, GIS Coordinator 419-592-6375
Ellen Kahle, Clerk 419-592-2976
Derek Heitzman, P.E., P.S., Deputy Engineer/
Surveyor 419-592-2976
Jon Horner, Project Manager 419-592-2976
Kim Zandbergen, Tax Map Assistant 419-592-6375

HIGHLAND

138 Bowers Ave., P.O. Box 297, Hillsboro, OH 45133-0297

Phone: 937-393-3496 FAX: 937-393-3498

email: cfauber@highlandcountyeng.org



District 9, Hillsboro, 558 Sq. Miles, Pop. 43,162

Education: University of Cincinnati, BSCE

Previous Experience: Deputy Engineer, Highland County, 2002-2019.

Spouse: Denise Fauber

Christopher M. Fauber, P.E., P.S., Eff. 5/2019

Christian R. Dunlap, E.I.T., Deputy Engineer 937-393-3496
Jerry Miller, Maintenance Superintendent..... 937-393-3496
Will Dixon, Maintenance Coordinator 937-393-3496
Stephanie Seeling, Secretary/Bookkeeper 937-393-3496
Krista Gard, Secretary/Bookkeeper 937-393-3496
Heather Loudin, Tax Map Specialist 937-393-9964
Emily Tolliver, Tax Map Specialist 937-393-9964
Gary Martin, GIS Manager 937-393-9546

HOCKING

1286 California Avenue, Logan, OH 43138-8999

Phone: 740-385-8543 FAX: 740-385-0542

**email: hockingengineer@hocking.oh.gov;
ddillon@hocking.oh.gov**

District 10, Logan, 421 Sq. Miles, Pop. 28,180

Education: The University of Akron, BSCE;
The University of Akron, MSCE; Ashland
University, MBA



Previous Experience: Deputy Engineer, Hocking
County, S&ME Inc., Senior Engineer, Cuyahoga
County Engineer, ODOT District 11, Roadway
Services Manager, URS, Department Head,
Construction Services, Kenmore Construction,
Project Manager, GPD, Engineer I

Douglas L. Dillon, P.E., P.S., Eff. 1/2021

Maggi Berry, Administrative Assistant 740-385-8543
Kevan Mathias, Roadway Superintendent 740-385-8543
Michelle McCort, Secretary/Accounting Clerk 740-385-8543
Chris LeRoy, Chief Surveyor..... 740-385-8543
David Sheets, Bridge Inspector in Training..... 740-385-8543

HOLMES

7191 SR 39, P.O. Box 29 Millersburg, OH 44654

Phone: 330-674-1856 FAX: 330-674-7918

email: engineer@holmesengineer.org

www.holmesengineer.org

District 11, Millersburg, 424 Sq. Miles, Pop. 44,166

Education: Stark Technical College,
AASCET; The Ohio State University, BSCE

Previous Experience: City of Akron, Water Dept.,
Co-Op, 1 yr; Burgess & Niple, Ltd., Bridge Inspec-
tor, 2 yrs.; City of Columbus, Bridge Section, Co-
Op, 2 yrs.; Kokosing Construction Co., Project
Engineer, 2 yrs; Linn Engineering, Inc., Design
Engineer, 2 yrs; Stark County, Metroplolitan Sew-
er Dist., Design Engineer, 3 yrs; Holmes County
Engineer's Office, Deputy Engineer, 2 yrs.

Spouse: Diane C. Young



Christopher R. Young, P.E., P.S., Eff. 10/2003

cryoung@holmesengineer.org

Josh Galbraith, P.E., P.S., Deputy Engineer 330-674-1856

Melissa Troyer, Office Manager 330-674-1856

Tom Hipp, Road Superintendent 330-674-1856

HURON

150 Jefferson Street, Norwalk, OH 44857-1996

Phone: 419-668-1997 or 800-662-3647 (ENGR)

FAX: 419-668-8308

email: ltansey@huroncountyengineer.org

www.huroncountyengineer.org

District 3, Norwalk, 497 Sq. Miles, Pop. 58,583

Education: University of Toledo

Previous Experience: Lorain County Engineers
Office, Bridge Engineer, 10 years; Erie County
Engineers Office, Project Engineer, 4 years; Ar-
cadis Engineering, Design Engineer, 3 years.

Spouse: Kristy



Lee E. Tansey, P.E., P.S., Eff. 1/2/2017

Doug Green, Chief of Staff419-668-1997, Ext. 103
dgreen@huroncountyengineer.org

John Damm, P.E., P.S., Deputy Engineer 419-668-1997, Ext. 118
jdamm@huroncountyengineer.org

Dan Weaver, Business Administrator 419-668-1997, Ext. 116
dweaver@huroncountyengineer.org

Amanda Buser, P.S., Surveyor419-668-1997, Ext. 119
abuser@huroncountyengineer.org

Gary Dauch, Superintendent 419-541-0577

JACKSON

3062 Clary Road, Jackson, OH 45640-9491

Phone: 740-286-4139

email: mmiller@jcengr.net

District 9, Jackson, 422 Sq. Miles, Pop. 32,531

Education: Ohio University, BSCE

Previous Experience: Asst. County Eng., Jackson County Engineer's Office (2008-10); Owner, Miller's Surveying, LLC (2003-08); Part-Time Project Eng., Roy A. DePue & Assoc. (1999-01); Surveyor in Training, Ohio Mining Consultants (1998-05); Part-Time Engineer, Burkhardt Eng. Co. (1998-02); Project Engineer, Judge Engineering Co. (1996-98); ODOT Summer Eng. Co-Op (Summers 1992-95).



Melissa Miller, P.E., P.S., Eff. 12/2010

Andy Dickens, Highway Superintendent 740-286-4301
Jason Sickles, Maintenance Superintendent 740-286-4301
Mark Jenkins, Engineer's Assistant 740-286-4139
Steve Arrowood, Highway Clerk 740-286-4301
Gloria J. Addington, Administrative Assistant 740-286-4139
Chris Stone, GIS Tax Map Technician 740-286-2375
Gregg Howell, GIS Tax Map Technician 740-286-2375

JEFFERSON

598 State Route 43, Steubenville, OH 43952-9806

Phone: 740-283-8574 FAX: 740-283-8589

email: engineer@jeffersoncountyoh.com

District 11, Steubenville, 411 Sq. Miles, Pop. 65,620

Education: The Ohio State University

Previous Experience: Project Engineer, CT Consultants, 5 yrs.; Project Engineer, Weirton Steel, 5 yrs.; Design Engineer, Barrett, Cargo & Withers, 5 yrs.



James F. Branagan, P.E., P.S., Eff. 1/1989

Clay Merrin, Chief Deputy Engineer 740-283-8574
Kara Bernhart, P.E., Bridge Engineer 740-283-8574
Mindy Nash, Administrative Assistant 740-283-8574
Heather Minkemeyer, Office Manager 740-283-8574
Eric Hilty, Construction/Design Engineer 740-283-8574
Shannan Gosbin, Assistant Bridge Engineer 740-283-8574
Allen Hammer, General Superintendent 740-283-8574
Scott Fabian, Assistant General Superintendent 740-283-8574
Kristine Sohovich, Office Secretary 740-283-8574
Phil Lawrence, Surveyor 740-283-8574

KNOX

422 Columbus Road, Mount Vernon, OH 43050-4499

Phone: 740-397-1590 FAX: 740-393-6813

email: cameronkeaton@co.knox.oh.us

www.co.knox.oh.us

District 5, Mount Vernon, 530 Sq. Miles, Pop. 62,399

Education: University of Toledo; Youngstown State University



Previous Experience: City Engineer, Mount Vernon, Ohio, 8 years; City Engineer, Ontario, Ohio, 3 years; Engineering Consultant, Richland Engineering Limited, 6 years; F. E. Krocka & Associates, 9 years.

Spouse: Christine Keaton

Cameron Keaton, P.E., P.S., Eff. 5/2016

Clint Cochran, P.E., S.I., Deputy Engineer

clintcochran@co.knox.oh.us 740-397-1590

Tonya Durbin, Fiscal Officer

tonyadurbin@co.knox.oh.us 740-397-1590

Kelly Shira, Payroll Clerk

kellyshira@co.knox.oh.us 740-397-1590

Tim Tyson, Highway Superintendent

timtyson@co.knox.oh.us 740-397-1590

Jason Payne, Assistant Engineer

jasonpayne@co.knox.oh.us 740-397-1590

Justin Smith, GIS Supervisor

justinsmith@co.knox.oh.us 740-393-6754

LAKE

105 Main Street, Suite A205, Painesville, OH 44077

Phone: 440-350-2770 FAX: 440-352-8133

email: james.gills@lakecountyohio.gov

www.lakecountyohio.org/engineer

District 12, Painesville, 231 Sq. Miles, Pop. 232,202

Education: Case Institute of Tech, BSCE



Previous Experience: President, GGJ Inc. Consulting Engineer, 14 yrs.; Vice President Frank A. Thomas & Assoc. Consulting Engineers, 20 yrs.; Jefferson Co. Engineer, 4½ yrs.

James R. Gills, P.E., P.S., Eff. 1/1/2001

Traci A. Salkiewicz, P.E., Chief Deputy Engineer 440-350-2770

traci.salkiewicz@lakecountyohio.gov

Alan L. Exley, Chief Design Engineer 440-350-2770

Gabe Liptak, Bridge Engineer 440-350-2770

Ray Martin, Road Superintendent 440-350-2770

Colleen Aguirre, Administrator 440-350-2770

LAWRENCE

3001 South 6th Street, Ironton, OH 45638
Phone: 740-533-4317 Fax: 740-534-5808
email: pleighty@lawrencecountyengineer.org
www.lawrencecountyengineer.org

District 9, Ironton, 456 Sq. Miles, Pop. 58,570



Education: University of Kentucky, BSCE;
Marshall University, MSE

Previous Experience: E.L. Robinson Engineer-
ing, 2004-2015; Ross Brothers Construction
Company 2001-2004.

Patrick D. Leighty, P.E., P.S., Eff. 6/2015

Bryan Birkel, Highway Superintendent
bbirkel@lawrencecountyengineer.org 740-532-3436
Michelle Collins, Deputy Engineer – Administration & Finance
mcollins@lawrencecountyengineer.org 740-533-4317
Larry Norris, Deputy Engineer – Special Projects
lnorris@lawrencecountyengineer.org 740-532-3436
Gary Murnahan, Deputy Engineer – Real Estate
gmurnahan@lawrencecountyengineer.org 740-533-4317
Paul Rubadue, Deputy Engineer – GIS & Mapping
prubadue@lawrencecountyengineer.org 740-533-4317
Faith Yearego, Administrative Assistant
fyarego@lawrencecountyengineer.org 740-533-4317
Jim Nelson, Timekeeper/Clerk
jnelson@lawrencecountyengineer.org 740-532-3436



Stantec

**Stantec is a proud
sponsor of CEO**

Design with community in mind
stantec.com/ohio-offices

LICKING

20 S. Second Street, Newark, OH 43055-5691

Phone: 740-670-5280 Fax: 740-670-5295

email: jknerr@lcounty.com

District 5, Newark, 685.5 Sq. Miles, Pop. 178,519

Education: The Ohio State University, BSCE, BSS

Previous Experience: Chief Deputy Engineer, Licking County 2015-2016; Roadway Engineer, Licking County 2013-2015; Natural Resources Engineer 3, ODNR 2010-2013; Adjunct Instructor, ITT Technical Institute and COTC 2009-2013; Project Manager, Geo-Graphics, Inc. 2001-2010; Surveyor/Engineer Technician, Geo-Graphics, Inc. 1993-2001.

Spouse: Carrie Knerr



Jared N. Knerr, P.E., P.S., Eff. 11/2016

Ryan Applegarth, Construction Projects Manager	740-670-5289
Kim Christian, Deputy Administrator	740-670-5299
Loren Dobbins, Jr., Highway Superintendent.....	740-670-5294
Tyler Dye, P.E., Roadway Engineer	740-670-5285
William B. Evans, Bridge Specialist.....	740-670-5298
Matthew D. Farley, P.S., Chief Surveyor	740-670-5250
Mitch Flowers, Roadway Specialist.....	740-670-5283
Sullivan Gwinn, P.E., Assistant Engineer	740-670-5284
Jennifer Johns, Administrative Assistant.....	740-670-5280
Trent Sforza, Assistant Highway Superintendent.....	740-670-5386
Jordan Susil, Assistant Highway Superintendent.....	740-670-5349

KEM

K.E. McCARTNEY & ASSOCIATES

ENGINEERS • PLANNERS • SURVEYORS

“Engineering Infrastructure Solutions Since 1978”

KEM SERVICES:

- Site Design
- Water / Wastewater Design
- Transportation Planning & Design
- Construction Administration & Inspection
- CCTV Inspection
- Right of Way Acquisition
- GIS Mapping
- Storm Water Management
- Sanitary System Evaluation Surveys



www.kemccartney.com

LOGAN

1991 County Road 13, P.O. Box 427, Bellefontaine, OH 43311-0427

Phone: 937-592-2791 FAX: 937-599-2658

email: scoleman@lceo.us

www.lceo.us

District 7, Bellefontaine, 460 Sq. Miles, Pop. 45,997

Education: The Ohio State University, BSCE
6/94, MSCE 3/01



Previous Experience: Survey Crew, Logan County Engineer's Office '90-'92; Ohio Department of Transportation '93; Engineer Intern, Logan County Engineer's Office, '94-'96; Assistant Eng. '96-'99; Chief Deputy Eng. '99-'02; President of Ohio Council of County Officials, '19-'20.

Spouse: Audreau Coleman

Scott C. Coleman, P.E., P.S., Eff. 1/2/2002

Michael Kerns, P.E., Assistant Engineer 937-592-2791
W. Todd Bumgardner, Administrative Coordinator . 937-592-2791
Mark Hilty, General Superintendent 937-592-2791
Shirley Brunke, Account Clerk 937-592-2791
Misty Centers, Personnel Specialist 937-592-2791
Michaela Brunke, Secretary 937-592-2791
M. Elliott Fullerton, Bridge Superintendent 937-592-2791
Steve Tracey, Ditch/Traffic Superintendent 937-592-2791
Dan McMillen, Highway Superintendent 937-592-2791
Map Room..... 937-599-7230

LORAIN

247 Hadaway Street, Elyria, OH 44035-7792
Phone: 440-329-5586 FAX: 440-329-5587
email: kcarney@loraincountyengineer.com
http://www.loraincounty.com/engineer

District 3, Elyria, 495 Sq. Miles, Pop. 312,964

Education: Lorain County Community College
(Elyria, OH)



Previous Experience: City Engineer, Twinsburg, OH, 2 yrs.; Assistant Director of Engineering, Westlake, OH, 4 yrs.; Project Manager, Forest City Enterprises (Cleveland) 4 yrs.; Design Engineer, Neff & Associates (Cleveland) 6 yrs.

Ken Carney, P.E., P.S., Eff. 1/1989

Robert Klaiber, Asst. County Engineer 440-329-5586
RKlaiber@loraincounty.us
Peter Zwick, Chief Deputy Engineer 440-329-5586
PZwick@loraincounty.us
Shaun Duffala, Bridge Engineer 440-329-5586
SDuffala@loraincounty.us
Maggie Hopkins, Business Administrator 440-329-5589
MHopkins@loraincounty.us
Jean Kohls, Administrative Assistant/Business
Operations 440-329-5508
JKohls@loraincounty.us
Mary Kelleher, Executive Administrative Assistant 440-329-5586
MKelleher@loraincounty.us
Rick Dominico, Highway Maintenance
Superintendent 440-326-5880
RDominico@loraincounty.us
Roger Engle, Sanitary Supervisor 440-329-5584
REngle@loraincounty.us
Brenda Varady, Personnel/Payroll Officer..... 440-329-5588
VaradyB@loraincounty.us

LUCAS

1049 S. McCord Road, Holland, OH 43528
Phone: 419-213-2860 FAX: 419-213-2829
All other County Departments: 419-213-4000
email: mpniewski@co.lucas.oh.us
www.co.lucas.oh.us/engineer

District 2, Toledo, 341 Sq. Miles, Pop. 431,212

Education: University of Michigan, BSCE, MSCE;
Michigan Technological University, BS Surveying;
Bowling Green State University, MBA



Previous Experience: Chief Deputy Engineer, Lucas County, 2017-2019; Program Manager, U.S. Army Corps of Engineers, 2010-2017, Principal, Cardno WRG, 2006-2010, Project Manager, METCO Services, 2003-2006, Senior Engineer, Soil and Materials Engineers, 1998-2003.

Spouse: Melissa Pniewski

Mike Pniewski, P.E., P.S., Eff. 1/2020

Michael Stormer, P.E., Chief Deputy Engineer
mstormer@co.lucas.oh.us 419-213-2860
Kelleigh Decker, Administrative Deputy
kdecker@co.lucas.oh.us 419-213-2860
Joel Palermo, P.E., Construction Engineer
jpalermo@co.lucas.oh.us 419-213-2860
Matt Puhl, P.E., P.S., Chief Surveyor
mpuhl@co.lucas.oh.us 419-213-2860
John Bowser, Road Maintenance Superintendent
jbowser@co.lucas.oh.us 419-213-2860
Bryan Zienta, P.E., Bridge Engineer
bzienta@co.lucas.oh.us 419-213-2860
Joe Shultz, Real Estate Coordinator
jshultz@co.lucas.oh.us 419-213-2860
Josie Smith, Human Resources Administrator
jsmith@co.lucas.oh.us 419-213-2860
Mike Tatar, Public Information Officer
mtatar@co.lucas.oh.us 419-213-2860

MADISON

825 US 42, NE, London, OH 43140-8512
Phone: 740-852-9404 FAX: 740-852-9530
email: bryan.dhume@madison.oh.gov
<http://co.madison.oh.us/engineer/>

District 6, London, 463 Sq. Miles, Pop. 43,947

Education: Ohio University, BSCE

Previous Experience: Project Manager,
C. J. Mahan Construction Co., 2014-2015; Chief
Deputy Engineer/Assistant Engineer, Logan
County Engineer, 2007-2014; Project Engineer,
Erie County Engineer, 2006-2007; Project
Engineer, Jones-Stuckey Ltd., Inc., 2001-2006.

Spouse: Kelly Dhume



Bryan D. Dhume, P.E., P.S., Eff. 1/2016

- Charles (Chuck) Duvall, Chief Deputy Engineer 740-852-9404
- Joe Datz, Deputy Engineer 740-852-9404
- Heidi Howerton, Executive Assistant 740-852-9404
- Nathan Ernst, Operations Manager 740-852-9404
- Kenneth L. Koppes, P.E., Deputy Engineer, Drainage
& Ditch Maintenance 740-852-9404
- Valerie Eades, Tax Map Supervisor 740-852-9404
- Jim Holland, Road Superintendent 740-852-9404
- Chad Peters, Traffic Superintendent 740-852-9404
- Scott Sanders, Garage Superintendent 740-852-9404
- Corey Pruitt, Ditch Superintendent 740-852-9404
- Aaron Rapp, Drainage Superintendent 740-852-9404
- Phil Sparks, Bridge Superintendent 740-852-9404

OHIO CAT IS THE COMPLETE SOURCE FOR ALL YOUR EQUIPMENT LEASE, SALES, PARTS AND RENTAL NEEDS.

SOURCEWELL PROGRAM CONTACTS:

BOB SHIMKO 440-241-7645
CONSTRUCTION/RENTAL EQUIPMENT

CHET CRAFT 614-851-3506
POWER SYSTEMS GENERATOR SALES/RENTALS

Ohio CAT **OHIOCAT.COM**

Ohio CAT Rental **OHIOCATRENTALSTORE.COM**

MAHONING

940 Bears Den Road, Youngstown, OH 44511-1299

Phone: 330-799-1581 FAX: 330-799-4600

email: pginnetti@mahoningcountyoh.gov

www.mahoningcountyoh.gov/engineer

District 4, Youngstown, 415 Sq. Miles, Pop. 229,044

Education: Youngstown State University, BSCE;
Columbus State Community College, Certificate
of Surveying

Previous Experience: Survey Manager, Herbert
Rowland & Grubic, Inc. 2011-13; Design Engi-
neer, ODNR 2008-11; Regional Manager, Stantec
Consulting Services, Inc., 2006-08; President,
GMS Land Surveying, Inc., 2002-06; Chief
Surveyor/Associate Engineer, Hyde-LeRoy Land
Surveying 1998-02; Associate Engineer, City
of Columbus, Department of Public Utilities,
Division of Electricity, 1997-99; Crew Chief, ms
consultants, inc., 1995-97.



Patrick T. Ginnetti, P.E., P.S., Eff. 1/7/2013

Bob Durbin, P.E., P.S., Deputy Engineer

bdurbin@mahoningcountyoh.gov 330-799-1581

Jeff Smith, P.E., P.S., Construction/Design Engineer

jeffrey.smith@mahoningcountyoh.gov 330-799-1581

Michael Stipetich, P.E., P.S., Construction/Design Engineer

mstipetich@mahoningcountyoh.gov 330-799-1581

Angela Van Oudenhove, Engineer's Assistant

avanoudenhove@mahoningcountyoh.gov 330-799-1581

MARION

222 W. Center Street, Marion, OH 43302

Phone: 740-223-4110 FAX: 740-223-4119

email: engineer@co.marion.oh.us

www.co.marion.oh.us/engineer

District 6, Marion, 409 Sq. Miles, Pop. 65,515

Education: Ohio Northern University

Previous Experience: Marion County Deputy En-
gineer 1985-2001; Pleasant Zoning Commission;
Marion Regional Planning; Marion Chamber of
Commerce; Marion Community Improvement
Corporation; Ohio Farm Bureau.



Spouse: Catherine Irons

Bradley K. Irons, P.E., P.S., Eff. 1/2002

Charles Walker, Deputy Engineer 740-223-4110

Shannon Massey, Administrative Assistant 740-223-4110

Roberta Ruth, Administrative Deputy 740-223-4110

Dale Stage, Tax Map Department 740-223-4110

James Baughman, Drainage Technician 740-223-4110

Art Cheney, Highway Superintendent 740-382-1902

Jason Radel, Tax Map Department 740-223-4110

MEDINA

791 W. Smith Road, P.O. Box 825, Medina, OH 44258-0825

Phone: 330-723-9559 FAX: 330-723-9661

email: aconrad@medinaco.org

www.highwayengineer.co.medina.oh.us

District 3, Medina, 425 Sq. Miles, Pop. 181,448



Education: University of Akron, BSCE

Previous Experience: Assistant County Engineer, Medina County, 12 years; Subdivision Engineer, Medina County, 5 years; McCoy & Associates, 1 year.

Spouse: Billie Conrad

Andrew J. Conrad, P.E., P.S., Eff. 1/2017

Josh Wolf, P.E., Chief Deputy Engineer

jwolf@medinaco.org 330-723-9558

Dan Becker, Administrative Assistant

dbecker@medinaco.org 330-723-9556

Gina Frimel, Administrative Secretary

gfrimel@medinaco.org 330-723-9561

Mike Martin, Tax Map Supervisor

mamartin@medinaco.org 330-725-9798

Quintin Channell, Highway Superintendent

qchannell@medinaco.org 330-764-8780

Jame Cottrell, P.S., Surveyor

jcottrell@medinaco.org 330-723-9567

MEIGS

34110 Fairground Road, Pomeroy, OH 45769-4110

Phone: 740-992-2911 or 6235 FAX: 740-992-6381

email: eugenetriplett.mchd@yahoo.com

District 10, Pomeroy, 436 Sq. Miles, Pop. 22,361



Education: Ohio University, BSCE

Previous Experience: Design & Planning ODOT District 10, 7 yrs.; Chief Engineer, Crown City Mining, 10 yrs.; Owner, Triplett Engineering Services 12 yrs.

Eugene Triplett, P.E., P.S., Eff. 1/1/2001

C.T. Chapman, Superintendent

0001963@gmail.com 740-992-2911

Ron Burke, Assistant Superintendent

rb.mchd@yahoo.com 740-992-2911

John R. Bentz, P.E., Assistant Engineer

jb.mchd@yahoo.com 740-992-2911

Sara Walpole, Engineering Technician

sw.mchd@yahoo.com 740-992-2911

Camille Bolin, Office Manager

mchdoffmgr@gmail.com 740-992-2911

MERCER

4884 Mud Pike, Celina, OH 45822

Phone: 419-586-7759 FAX: 419-586-9887

email: engineer@engineer.mercercountyohio.gov
jim.wiechart@engineer.mercercountyohio.gov

District 7, Celina, 444 Sq. Miles, Pop. 42,154



Education: University of Toledo, BSCE

Previous Experience: Mercer County Assistant Eng., 4 yrs.; Paulding County Chief Deputy Eng., 2 yrs.; Paulding County Bridge Engineer, 3 1/2 yrs.

Spouse: Kit Wiechart

James (Jim) A. Wiechart, P.E., P.S., Eff. 10/2002

Brad Laffin, Operations Manager

brad.laffin@engineer.mercercountyohio.gov 419-586-7759

Aaron Moeller, Design Engineer/Assistant County Engineer

aaron.moeller@engineer.mercercountyohio.gov 419-586-7759

Aaron Schamp, Survey Design Technician

aaron.schamp@engineer.mercercountyohio.gov ... 419-586-7759

Dusty Messner, Highway Maintenance Superintendent

dusty.messner@engineer.mercercountyohio.gov ... 419-586-4292

Derrick Harter, Highway Maintenance Supervisor

derrick.harter@engineer.mercercountyohio.gov 419-586-4292

T.J. Smalley, Bridge Supervisor

tj.smalley@engineer.mercercountyohio.gov 419-586-4292

Darren Porter, Highway Maintenance Supervisor/Safety Director

darren.porter@engineer.mercercountyohio.gov 419-586-4292

Sam Mescher, Equipment Maintenance Supervisor

sam.mescher@engineer.mercercountyohio.gov 419-586-4292

Karen Heinrichs, Administrative Assistant

karen.heinrichs@engineer.mercercountyohio.gov . 419-586-7759



Engineering

Building Partnerships

LJBinc.com

(866) 552-3536



STRUCTURAL



FALL PROTECTION
SAFETY



TRANSPORTATION



SITE DESIGN



SURVEY



WATER
RESOURCES



TECHNOLOGY
& INNOVATION

MIAMI

2100 N. County Road 25-A, Troy, OH 45373-1333

Phone: 937-440-5656 FAX: 937-440-5659

email: mceo@MiamiCountyOhio.gov

http://co.miami.oh.us/engineer

District 7, Troy, 407 Sq. Miles, Pop. 107,899

Education: University of Dayton, BSCE



Previous Experience: Engineering Technician (Miami County Engineer's Office), 1990-1997; City of Troy, Ohio City Engineer, 1997-2000; Chief Design Engineer (Miami County Engineer's Office), 2000-2011.

Spouse: Laura Huelskamp

Paul P. Huelskamp, P.E., P.S., Eff. 4/2011

Britt R. Havenar, P.E., P.S., Chief Deputy 937-440-5656
Sandy Curtis, Administrative Assistant..... 937-440-5656
Angie Seagraves, Administrative Professional 937-440-5656
Laura Penny, Accounting/Payroll Professional 937-440-5656
Andy Smith, GIS/Tax Map Supervisor 937-440-6025
Ty Owens, Highway Maintenance Superintendent... 937-440-5658
Dan Baker, P.E., S.I., Drainage/Hydrology Engineer 937-440-5656
Corey Thompson, Work Safety/Special Projects..... 937-440-5656
Mitchell Lindsey, E.I.T., Traffic & Roadway Safety 937-440-5656
Lew McClelland, P.S., Permits/Constr. Inspector..... 937-440-5656
Marilyn Hemsworth, Engineering Technician..... 937-440-5656

MONROE

P.O. Box 555, Woodsfield, OH 43793-0555

Phone: 740-472-2537 FAX: 740-472-2530

email: azwick@monroecountyengineer.com

www.monroecountyengineer.com

District 10, Woodsfield, 456 Sq. Miles, Pop. 13,514

Education: Ohio University, BSCE



Previous Experience: Deputy Engineer at Washington County, 2014-2016; Project Engineer at Pickering Associates, 2012-2014; Project Engineer at Lock One, Inc., 2007-2011; Crew Chief at Vernon Surveying Company, 2001-2007.

Amy M. Zwick, P.E., P.S., Eff. 1/2/2017

Janine Reagan, Administrative Assistant 740-472-2537
Brian Kress, Highway Supervisor
& Oil-Gas Coordinator..... 740-472-2537

MONTGOMERY

451 W. Third Street, Dayton, OH 45422-1260

Phone: 937-225-4904 FAX: 937-496-7441

email: grunerp@mcoho.org

www.engineer.mcoho.org

District 7, Dayton, 459 Sq. Miles, Pop. 536,136

Education: University of Cincinnati, BSCE, MS

Previous Experience: Chief Deputy Engineer, Montgomery County, 2010-2011; Sr. Vice President, Gresham, Smith & Partners, 2006-2010; Partner, Vice-President, Woolpert, Inc., 1979-2006; Bridge Engineer, Chief Deputy Engineer, Montgomery County, 1973-1978.

Spouse: Kathi Gruner



Paul W. Gruner, P.E., P.S., Eff. 7/1/2011

Gary Shoup, P.E., Chief Deputy Engineer 937-225-6351
Andy Shahan, P.E., P.S., Deputy Engineer 937-225-5007
Jo (Joanne) Wilson, Director of Operations 937-837-2528
Tracy Howell, Executive Assistant 937-496-3279
David Shields, P.E., Bridge Engineer 937-496-6545
Joe Dura, P.E., Design Department Manager 937-225-5507
Matt Venable, Construction Administrator 937-496-7736
Mark Stuart, P.E., Plat & Drainage Administrator 937-225-5408
Stacy Vallance, Special Projects Administrator 937-225-5402
Kim Beckner, Safety & Human Resources Director 937-837-2528
Wayne Boutwell, P.S., Senior Surveyor 937-225-6340
Victoria Watson, J.D., Real Estate Administrator 937-496-7741
Melanie Zimmerman, Comptroller 937-225-4872

MORGAN

155 E. Main Street, Room 208, McConnelsville, OH 43756-1172

Phone: 740-962-3171 FAX: 740-962-3703

email: stevan.hook@morgancounty-oh.gov

www.morgancounty-oh.gov

District 10, McConnelsville, 420 Sq. Miles, Pop. 13,955

Education: Ohio University, BSCE

Previous Experience: Hook Consulting Service, 3 yrs.; Mining Engineer, Engineering Supt., Operation Supt. for AEP, 29 yrs.

Spouse: Michelle R. Hook



Stevan Hook, P.E., P.S., Eff. 1/2/2005

John Telesz, P.E., P.S., Deputy Engineer..... 740-962-3171
Kiley Apperson, Administrative Assistant 740-962-3171
Jeff McInturf, P.S., Surveyor 740-962-3171
Dean Cain, Superintendent 740-962-2041
Marcia Wolfe, GIS Technician 740-962-3171

MORROW

50 East High Street, Mt. Gilead, OH 43338
Phone: 419-947-4530 FAX: 419-947-4540
email: highway6355@yahoo.com
<http://engineer.co.morrow.oh.us/>

District 6, Mt. Gilead, 403 Sq. Miles, Pop. 34,892



Education: Ohio Northern University, BSCE

Previous Experience: Wyandot County Engineer's Office, 2002-2014, Floyd Brown & Associates, 2000-2002; URS, 1998-2000.

Bart Dennison, P.E., P.S., Eff. 1/3/2017

Don Glosser, P.E., Bridge Engineer 419-946-4941
Brian Seybert, Assistant Engineer 419-946-4941
Eric Disterdick, Operations Superintendent 419-946-4941
Sherri Sheriff, Clerical Specialist 419-946-4941
Toni Ridge, Secretary 419-947-4530
Brandon Strain, Tax Map 419-947-4530

MUSKINGUM

109 Graham Street, Zanesville, OH 43701
Phone: 740-454-0155 FAX: 740-455-7180
email: engineer@mceo.org
www.mceo.org

District 5, Zanesville, 651 Sq. Miles, Pop. 86,346



Education: The Ohio State University, BSCE

Previous Experience; Noble County Engineer, 6 years; Noble County Deputy Engineer, 2 years; Eicher Engineering, 7 years; Ohio Department of Transportation, 3 years; Muskingum County Deputy Engineer, 2 years.

Mark J. Eicher, P.E., P.S., Eff. 5/2018

Matt Russell, Administrative Deputy..... 740-454-0155
Gary Williams, Deputy Engineer 740-454-0155
Shawn Johnson, Project Manager 740-454-0155
Barbara Matheny, Project Manager..... 740-454-0155
Denis Swierz, P.S., Professional Surveyor..... 740-454-0155
Andy Swinehart, Map Dept. Supervisor..... 740-455-7116
Bryan Lowry, Highway Superintendent 740-453-0381
Rick Alexander, Fleet Superintendent 740-453-0381

NOBLE

46003 Marietta Road, Caldwell, OH 43724
Phone: 740-732-4400 FAX: 740-732-1059
email: tcoss@noblecountyohio.gov
www.noblecountyohio.gov

District 10, Caldwell, 404 Sq. Miles, Pop. 14,166

Education: Ohio University, BSCE



Previous Experience: Deputy Engineer, Co-shocton County 2019-2021; Project Engineer, ODOT (District 5) 2008-2019; Surveyor, Sims Surveying 1999-2015.

Spouse: Jennifer L. Coss

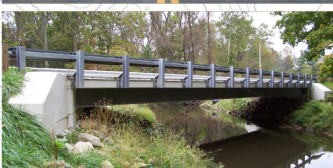
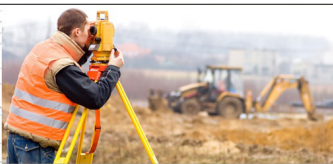
Todd A. Coss, P.E., P.S., Eff. 1/2021

James Fleeman, P.E., S.I., Deputy Engineer	740-732-4409
Ryan Miller, Highway Superintendent	740-732-4409
Ben Davis, Assistant Superintendent	740-732-4409
Kris Stritz, Administrative Assistant	740-732-4409
Amy Brown, Administrative Assistant	740-732-4409
Ava Fisher, Map Department Supervisor/ GIS Coordinator	740-732-4606
Jenae Reed, Map Department, Draftsman	740-732-4941



**SHAFFER,
JOHNSTON,
LICHTENWALTER
& ASSOCIATES, INC.**
Consulting Engineers & Surveyors

- Site Development
- Surveying & Mapping
- Environmental Engineering
- Structural Engineering
- Transportation Engineering



**Mansfield Office:
419-756-7302**
**Wooster Office:
330-345-6377**
www.sjl-inc.com

OTTAWA

8247 W. SR 163, Oak Harbor, OH 43449

Phone: 419-734-6777 FAX: 419-734-6768

email: OttawaCoEng@co.ottawa.oh.us

District 2, Port Clinton, 253.27 Sq. Miles, Pop. 40,479

Education: University of Toledo, BSCE; Owens Community College Surveying Certificate

Previous experience: Assistant Engineer – 4 yrs; Chief Deputy Engineer – 3 yrs; Deputy Engineer – 4 yrs; Woodbridge Corporation, Process Engineer – 1 yr; Henry Gurtzweiler Inc., Union Ironworker – 1 yr; Northern Manufacturing, Manufacturing Engineer – 3 yrs; City of Oregon, Engineering Intern – 2 yrs.



Spouse: Danielle

Ronald P. Lajti, Jr., P.E., P.S., Eff. 1/2015

James Moore, P.E., Bridge Engineer/Operations

Coordinator 419-734-6778

Mike Wittman, P.S., Chief Surveyor/GIS

Coordinator 419-734-6871

Daniel Toris, P.E., P.S., Deputy Drainage Engineer 419-734-6716

Craig Miller, P.E., Deputy Engineer 419-734-6988

Tina Molnar, Administrative Assistant 419-734-6775

Mike Brough, Utilities Coordinator/Engineer Tech ... 419-734-6773

Jeff Allen, Engineer Aide/Construction Inspection 419-734-6772

Kendra German, Administrative Clerk/Receptionist .. 419-734-6777

Dan Jensen, Superintendent 419-898-6463

Eric Petersen, Assistant Superintendent 419-898-6463

Wes Dobbelare, Crew Leader 419-898-6463

Dean Brough, Highway Clerk 419-898-6463

Daniel Brough, Crew Leader 419-898-6463

PAULDING

801 W. Wayne St., Paulding, OH 45879-1284

Office Phone: 419-399-2433 FAX: 419-399-3363

email: engineer@pauldingcountyoh.com

District 1, Paulding, 416 Sq. Miles, Pop. 18,858

Education: Ohio Northern, BSCE

Previous Experience: Chief Deputy Engineer, Paulding County, 4 yrs; Bridge Engineer, Paulding County, 2 yrs; Deputy Engineer, Paulding County, 2 yrs.



Spouse: Stacy McGarvey

Travis McGarvey, P.E., P.S., Eff. 1/3/2005

Aaron Timm, Operations Superintendent 419-399-2433
aaront@pauldingcountyoh.com

Clark Schlatter, P.E., Assistant County Engineer..... 419-399-2433
clarks@pcohio.us

Cindy Peters, Operations Coordinator 419-399-2433
cindy@pcohio.us

Ron Wirts, Shop & Fleet Supervisor 419-399-2433
ronw@pauldingcountyoh.com

PERRY

2645 Old Somerset Road, P.O. Box 29,
New Lexington, OH 43764-0029

Phone: 740-342-2191 FAX: 740-342-5502
email: k_cannon@sbcglobal.net

District 5, New Lexington, 410 Sq. Miles, Pop. 35,439



Education: Ohio University, BSCE

Previous Experience: Project Engineer, ODOT (Dist. 5) 1986-90; AREA Engineer, ODOT, 1990-92; Assistant District Construction Engineer, ODOT, 1992-93.

Spouse: Sharon Cannon

Kenton C. Cannon, P.E., P.S., Eff. 1/1993

Timothy E. Frash, P.E., P.S., Assistant County

Engineer	740-342-2191
Casey Harper, Secretary	740-342-2191
Clayton McCoy, P.E., P.S., Deputy Engineer	740-342-2191
Wyatt Tussing, Map Room	740-342-5541
Carl Harper, Road Superintendent	740-342-2191
Darron Rambo, Road Superintendent	740-342-2191
Mike Haberkamp, Map Room	740-342-5541
Jason Fulk, GIS Specialist	740-342-5541

PICKAWAY

121 West Franklin Street, Circleville, OH 43113-1648

Phone: 740-474-3360 FAX: 740-477-1245
email: cmullins@pickawaycountyohio.gov
www.pickaway.org

District 6, Circleville, 504 Sq. Miles, Pop. 58,458



Education: The Ohio State University, BS Agricultural Engineering, BS Civil Engineering

Previous Experience: Deputy Engineer, Pickaway County Engineer, 2002-2012; Assistant Engineer, Pickaway County Engineer, 2000-2002; Assistant Highway Superintendent, Pickaway County Engineer, 1996-2000.

Sterlin C. "Chris" Mullins, P.E., P.S., Eff. 12/29/2012

Anthony D. Neff, P.E., P.S., Chief Deputy Engineer	740-474-3360
Samatha Sturgell, Administrative Assistant	740-474-3360
Steve Smith, Highway Superintendent	740-474-3491
Lance Boyer, Assistant Highway Superintendent	740-474-3491
Jenny Griffin, Office Manager	740-474-3360
Sara Ward, Highway Dept. Administrative Assistant ..	740-474-3491
Jared Minor, E.I.T.,	740-474-3360

PIKE

502 S. Pike Street, Waverly, OH 45690-0502
Phone: 740-947-4259 FAX: 740-947-9339
email: pceo@pikecounty.oh.gov

District 9, Waverly, 444 Sq. Miles, Pop. 27,271

Education: Ohio University, BSCE, Ohio University, MSCE

Previous Experience: Construction Estimator and Contracts Administrator, The Sherman R. Smoot Co. (Columbus), 1985-89; Construction Estimator, Stone & Webster Engineering (Piketon, OH), 1980-85; Construction Engineer, D.G.M., Inc. (Beaver, OH), 1978-80; Production Engineer, Packard Electric Div., General Motors Corp. (Warren, OH), 1977-78.



Denny T. Salisbury, P.E., P.S., Eff. 8/1989

Jerry Wessel, Road Superintendent 740-947-4259
Steve Davis, Engineering Assistant 740-947-4259
Aaron Walls, Engineering Assistant II 740-947-4259
Teresa Cuckler, Accounting Clerk/Secretary 740-947-4259
Katrina Traylor, Tax Map Clerk 740-941-1906
Mackenzie Greene, Tax Map Clerk 740-941-1906
Carla Goodwin, Secretary 740-947-4259
Cheryl Tackett, Secretary 740-947-4259

PORTAGE

5000 Newton Falls Road, Ravenna, OH 44266

Phone: 330-296-6411 FAX: 330-296-2303

email: ljenkins@portageco.com • www.portagecounty-oh.gov/engineer

District 4, Ravenna, 478 Sq. Miles, Pop. 161,745

Education: Youngstown State University, BSCE; University of Akron, Surveying Certificate

Previous Experience: Chief Deputy County Engineer, Portage County, 2021-2023; Assistant County Engineer, Portage County, 2019-2021; Engineering Services Supervisor, City of Wadsworth, 2005-2019; Civil Engineer III, City of Wadsworth, 2001-2005; Civil Engineer II, City of Wadsworth 1997-2001; Civil Engineer I, City of Wadsworth, 1993-1997; Engineer, Technical Land Consultants, 1992-1993



Spouse: Melissa Jenkins

Larry Jenkins Jr., P.E., P.S., Eff. 5/2023

Tara Kramer, Administrative Assistant 330-298-3932
tkramer@portageco.com
Kelley Steigerwald, P.E., Assistant County Engineer . 330-296-3186
ksteigerwald@portageco.com
William Vermes, P.E., Bridge Engineer 330-296-7817
wvermes@portageco.com

Mike Collins, Project Manager	330-298-3933
mcollins@portageco.com	
Leslie Froelich, P.S., Tax Map Supervisor	330-297-3598
jfroelich@portageco.com	
John Trew, General Superintendent	330-298-3929
jtrew@portageco.com	
Doug DiMauro, Sign Shop Supervisor	330-298-3938
ddimauro@portageco.com	
Dale Novak, Garage Superintendent	330-298-3927
dnovak@portageco.com	
Gary Ellison, Bridge Crew Foreman	330-298-3928
gellison@portageco.com	
Buc McBride, Road Crew Foreman	330-298-3928
rmcbride@portageco.com	
Rob Hanna, Road Crew Foreman	330-298-3928
rhanna@portageco.com	
Keith Franko, Road Crew Foreman	330-298-3928
kfranko@portageco.com	

PREBLE

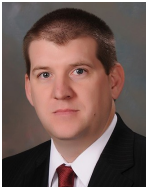
1000 Preble Drive, Eaton, OH 45320-9202
Phone: 937-456-4600 FAX: 937-456-4606
email: kcross@prebeng.org

District 8, Eaton, 427 Sq. Miles, Pop. 41,027

Education: Ohio Northern University, BSCE

Previous Experience: R.D. Zande & Associates,
2001-02; Professional Service Industries, 2002-
07; Preble County Engineer's Office, 2007-12.

Spouse: Jennifer Cross



R. Kyle Cross, P.E., P.S., Eff. 3/2012

Joni Wilken, Administrative Assistant	937-456-4600
Tony McWhinney, Chief Deputy	937-456-4600
Kevin Nelson, Highway Superintendent	937-456-4600
James Ray, Safety/Right of Way Coordinator	937-456-4600
James Wooton, Bridge Supervisor	937-456-4600
Dale Nisius, Maintenance Supervisor	937-456-4600
Robert Venable, Road Supervisor	937-456-4600
Charlie Housewright, Traffic Supervisor	937-456-4600
Rebekah Swartz, Receptionist	937-456-4600
Lori Ross, Clerk II	937-456-4600

PUTNAM

245 E. Main Street, Suite 205, Ottawa, OH 45875-1962

Phone: 419-523-6931 FAX: 419-523-6014

email: michael.lenhart@putnamcountyohio.gov

District 1, Ottawa, 480 Sq. Miles, Pop. 34,395



Education: The University of Toledo, BSCE

Previous Experience: Defiance County Engineer Office, Deputy Engineer, 1999-2015.

Spouse: Beth "Sam" Lenhart

Michael L. Lenhart, P.E., P.S. Eff. 5/2015

Kyle Gerding, Engineering Deputy 419-523-6931
Ryan Moran, Drainage 419-523-6931
Jeremy Gerding, Drainage 419-523-6931
Nolan Croy, Tax Mapping 419-523-6931
Laura Hiltibran, Administrative Assistant 419-523-6931
Stuart Teders, Bridge Superintendent 419-523-6832
Chad Okuley, Road Superintendent 419-523-6832
Ross Ruhe, Road Superintendent 419-523-6832

RICHLAND

77 N. Mulberry Street, Mansfield, OH 44902-1208

Phone: 419-774-5591 FAX: 419-774-5539

email: agove@rcengineer.com

www.rcengineer.com

District 3, Mansfield, 497 Sq. Miles, Pop. 124,504



Education: Ohio University, BSCE

Previous Experience: Chief Deputy Engineer, Richland County, 2012-2016; Deputy Engineer, Richland County, 2000-2012.

Spouse: Kimberly

Adam M. Gove, P.E., P.S., Eff. 1/2017

Kevin Payne, P.E., P.S., Chief Deputy Engineer 419-774-5833
Wilma Marquis, Office Manager 419-774-7506
Jon Dickinson, Highway Superintendent 419-774-5594
Chad Coward, P.E., P.S., Deputy Engineer 419-774-7505
C. Delafon Luna, P.E., P.S., Deputy Engineer 419-774-5674
Matt Christian, Bridge/Drainage Technician 419-774-5657
Jacquie Francis, Account Clerk 419-774-7892
Elaine Kiefer, Tax Map Supervisor 419-774-5620

ROSS

755 Fairgrounds Road, P.O. Box 458, Chillicothe, OH 45601-0458

Phone: 740-702-3130 FAX: 740-702-3135

email: charlieortman@rosscountyohio.gov

District 9, Chillicothe, 693 Sq. Miles, Pop. 77,205



Education: The Ohio State University

Previous Experience: Ross County Deputy Engineer, 7 yrs.; Private Contractors, 10 yrs. – Construction of bridges and roadways; ODOT – County Manager, District Roadway Service Manager, Construction Project Engineer, 9 yrs.

Charles R. Ortman, P.E., P.S., Eff. 7/1/2007

Claudia Cockrell, Executive Secretary 740-702-3130

Mike Buchanan, Road Superintendent 740-702-3140

Deric A. Cox, P.E., Bridge Program Manager 740-702-3130

SANDUSKY

2500 W. State Street, Fremont, OH 43420-1445

Phone: 419-334-9731 FAX: 419-334-9733

email: cbaez@sanduskycountyoh.gov

www.sanduskycountyengineers.com

District 2, Fremont, 409 Sq. Miles, Pop. 59,013

Education: University of Toledo, BSCE; Owens Community College, Surveying Certificate



Previous Experience: Deputy Engineer, Sandusky County, 8 yrs; Civil Engineer, The City of Oregon, 11 yrs; Engineering Intern, The City of Oregon, 1 yr; Engineering Intern, Davis-Besse, 2 yrs.

Spouse: Brandi

Carlos A. Baez, Sr., P.E., P.S., Eff. 4/2019

Rich Randolph, Design Engineer 419-334-9731

Dean Silva, P.S., Deputy Surveyor 419-334-9731

Noah Mahler, Civil Engineer 419-334-9731

Rick Villarreal, Inspector 419-334-9731

Tara Shanahan, Office Manager 419-334-9731

Chad Fisher, Road Superintendent 419-334-9731

Coral Rice, Clerical Specialist 419-334-9731

Lee Klohn, Ditch Maintenance 419-334-9731

Jenna Sommers, Drainage Coordinator 419-334-9731

Cody Amor, Engineer Technician 419-334-9731

SCIOTO

602 7th Street, Courthouse Room 401, Portsmouth, OH 45662

Phone: 740-355-8265 Courthouse FAX: 740-355-1428

Highway Department, 56 State Rt. 728, Lucasville, OH 45648

email: darren.lebrun@sciotocountyengineer.org

www.sciotocountyengineer.org

District 9, Portsmouth, 608 Sq. Miles, Pop. 74,392

Education: Ohio University, BSCE

Previous Experience: Engineering Instructor, Scioto County CTC, 2014-2016; Engineering Manager, Innovative Solutions, 2012-2014; Scioto County Sanitary Engineer, 2007-2012; City Engineer, Wellston, Ohio, 2002-2007; Project Engineer, Gilbane Building Company, 2000-2002; Project Engineer, Scioto County Engineer, 1998-2000; Project Engineer, Purdom Kaskey & Associates, 1996-1998; Estimator, Jacobs Engineering, 1996.

Spouse: Courtney



Darren LeBrun, P.E., P.S., Eff. 1/2/2017

Eddy Leadingham, Superintendent 740-259-5541

Dan Sutton, Maintenance Superintendent 740-259-5541

Carla Emmons, Finance Manager 740-259-5541

SENECA

3300 S. TR 151, Tiffin, OH 44883-9499

Phone: 419-447-1011

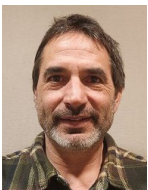
email: mzimmerman@senecacountyohio.gov

District 2, Tiffin, 551 Sq. Miles, Pop. 55,166

Education: 1990 degree in Ag. Econ. OSU; 2001 Honors Grad University of Toledo BS Civil Engineering; Owens Community College Survey Certificate

Previous Experience: Technician, Soil and Water Conservation District, Seneca County, 1 yr; Program Admin., 7 yrs; Director of Regional Planning, 2 yrs; Deputy Engineer, 10 yrs.

Spouse: Elizabeth "Libby"



Mark R. Zimmerman, P.E., P.S., Eff. 12/2007

Lisa Tracy, Office Manager

ltracy@senecacountyohio.gov 419-447-1011

Dave Kin, P.E., Chief Deputy Engineer

dkin@senecacountyohio.gov 419-447-1011

Jason Kirgis, Engineering Technician

jkirgis@senecacountyohio.gov 419-447-1011

Alexa Perkins, Survey/Mapping Manager

aperkins@senecacountyohio.gov 419-447-1011

Samantha Miller, Tax Map Supervisor

smiller@senecacountyohio.gov 419-448-5719

Shellie Mack, Assistant Tax Map Supervisor

smack@senecacountyohio.gov 419-448-5719

SHELBY

500 Gearhart Road, Sidney, OH 45365-9404
Phone: 937-498-7244 FAX: 937-492-8411
email: rbg@shelbycountyengineer.com
www.co.shelby.oh.us/county-engineer

District 7, Sidney, 409 Sq. Miles, Pop. 48,307



Education: University of Dayton, BS

Previous Experience: Chief Deputy Engineer for Shelby County, 1980-1999.

Spouse: Joni L. Geuy

Robert B. Geuy, P.E., P.S., Eff. 7/1999

Nick Miller, P.E., P.S., Chief Deputy Engineer

nmiller@shelbycountyengineer.com 937-498-7244

Mark Wiss, P.E., Operations Engineer

mw@shelbycountyengineer.com 937-498-7244

Sally Wood, Administrative Secretary

swood@shelbycountyengineer.com 937-498-7244

Wayne Russell, General Superintendent 937-498-7247

Barb Austin, Tax Map 937-498-7279

taxmap@shelbycountyengineer.com

STARK

5165 Southway Street, S.W., Canton, OH 44706-1998

Phone: 330-477-6781 FAX: 330-477-3926

email: kabennett@starkcountyohio.gov

www.starkcountyohio.gov/engineer

District 4, Canton, 567 Sq. Miles, Pop. 374,712

Education: University of Akron, BSCE

Previous Experience: Hammontree & Associates, Limited, President/Manager of Transportation Services (7 years), Chief Bridge Engineer (14 years), Bridge/Structural Engineer (4 years). R&F Coal Company, Engineering Intern (2 years).



Spouse: Barbara H. Bennett, P.E., P.S.

Keith A. Bennett, P.E., P.S., Eff. 12/2009

David R. Torrence, P.E., P.S.,

Chief Deputy Engineer 330-477-6781

Brian Cole, P.E., P.S., Highway /Traffic Engineer 330-477-6781

Scott M. Basinger, P.E., Bridge Engineer 330-477-6781

Tom Yankle, Budget Officer 330-477-6781

Troy Uphold, Highway Superintendent 330-477-6781

Dan Houck, P.S., Chief Surveyor 330-477-6781

SUMMIT

538 E. South Street, Akron, OH 44311-1843
Phone: 330-643-2850 FAX: 330-762-7829
email: abrubaker@summitengineer.net
summitengineer.net

District 4, Akron, 419.38 Sq. Miles, Pop. 540,567

Education: University of Akron, BSCE

Previous Experience: Senior Project Manager, McCoy Associates Inc. (2002-2009), City Engineer, City of Kent (1980-2002), CAK Airport Engineer/Assistant Airport Manager (1976-1980), Assistant Portage County Engineer (1971-1976), Akron Metropolitan Area Transportation Study Engineer (1969-1971), Instructor at the University of Akron College of Engineering Technology-Heavy Construction Methods (2000-2003).

Spouse: Patty



Alan Brubaker, P.E., P.S., Eff. 1/05/2009

Larry Fulton, P.E., Chief Deputy

lfulton@summitengineer.net 330-643-8458

Tina Merlitti, Executive Assistant to County Engineer

tmerlitti@summitengineer.net 330-643-8168

Heidi Swindell, Director of Administration

hswindell@summitengineer.net 330-643-8170

Patrick Dobbins, Director of Infrastructure Maintenance

pdobbins@summitengineer.net 330-643-8041

Joe Paradise, P.E., Capital Projects Engineer/Manager

jparadise@summitengineer.net 330-643-8105

Neal Miesle, P.E., Bridge Engineer/Manager

nmiesle@summitengineer.net 330-643-8453

Dave Koontz, P.E., Stormwater Engineer/Manager

dkoontz@summitengineer.net 330-643-8537

Chuck Hauber, P.E., P.S., Engineer/Project Manager

chauber@summitengineer.net 330-643-5269

Walt Schostak, P.S., Chief Surveyor

wschostak@summitengineer.net 330-643-8560

TRUMBULL

650 North River Road, Warren, OH 44483-2255

Phone: 330-675-2640 FAX: 330-675-2642

District 4, Warren, 625 Sq. Miles, Pop. 202,199

Education: Youngstown State University, B of Engineering; University of Akron, Bachelor of Science, Surveying and Mapping.



Previous Experience: Public Service Director, City of Euclid (2008-11); Hartford Township Trustee (1993-2011); Trumbull County Deputy Engineer (1998-2008); Trumbull County Assistant Engineer (1993-1998).

Spouse: Angela Smith

Randy L. Smith, P.E., P.S. Eff. 8/2011

Gary W. Shaffer, P.E., Deputy Engineer

hwshaffe@co.trumbull.oh.us 330-675-2253

Herb W. Laukhart, Jr., Director of Finance & Personnel

hwlaukha@co.trumbull.oh.us 330-675-2259

Tom Klejka, Highway Superintendent

hwklejka@co.trumbull.oh.us 330-675-2227

TUSCARAWAS

832 Front Avenue, SW, New Philadelphia, OH 44663-2082

Phone: 330-339-6648

email: engineer@co.tuscarawas.oh.us

www.co.tuscarawas.oh.us/engineer/

District 11, New Philadelphia, 569 Sq. Miles, Pop. 93,025

Education: Carnegie Mellon University, BSCE,



Previous Experience: Harrison County Engineer (2019-2023); Assistant Engineer, Harrison County (2016-2018); Survey Intern, Civil Design Associates (2013-2016); Natural Resources Engineer, ODNR (2009-2013); Civil Engineer, HNTB Corp. (2007-2009); Project Engineer, EMH&T (2005-2007)

Douglas N. Bachman, P.E., P.S., Eff. 10/2023

Genaro DeMonte, Assistant Engineer 330-339-6648

Rob Lint, P.S., Federal Aid Inspector 330-339-6648

Martha Campbell, Office Manager..... 330-339-6648

Jack Bierbower, Traffic Control Supervisor..... 330-339-6648

Steve McQueen, Road Superintendent..... 330-339-6648

Kevin Hursey, Garage Superintendent

Corey Henry, Foreman 330-339-6648

Matt Cappillo, Foreman..... 330-339-6648

Jim Hagan, Foreman 330-339-6648

UNION

233 W. Sixth Street, County Office Building,
Marysville, OH 43040

Phone: 937-645-3021 FAX: 937-645-3161

email: engineer@unioncountyohio.gov

jstauch@unioncountyohio.gov

www.unioncountyohio.gov/engineer

District 6, Marysville, 434 Sq. Miles, Pop. 61,769



Education: The Ohio State University, BS Agricultural Engineering.

Previous Experience: Assistant County Engineer, Union County, 22 years.

Spouse: Dianna

Jeff Stauch, P.E., P.S., Eff. 1/2009

Sam Cronk, Chief Building Official

scronk@unioncountyohio.gov 937-645-3083

Jessica Cain, Office Administrator

jcain@unioncountyohio.gov 937-645-3153

Justin Story, Superintendent

jstory@unioncountyohio.gov 937-645-3017

Operations Facility: 233 W. Sixth St., Marysville, OH
43040, Phone: 937-645-3018

VAN WERT

1192 Grill Road, Van Wert, OH 45891

Phone: 419-238-0210 FAX: 419-238-6372

email: kylewendel@bright.net

District 1, Van Wert, 409 Sq. Miles, Pop. 28,808

Education: The Ohio State University, BSCE;
Lima Technical College-Surveying Credit

Previous Experience: Assistant Sanitary Engineer, Allen County, 5 yrs.; Surveyor, Bacon & Associates, Lima, 3 yrs.; Assistant County Engineer, Van Wert County, 4 yrs.

Spouse: Christie Wendel



Kyle J. Wendel, P.E., P.S., Eff. 1/2001

Kory Thatcher, P.E., P.S., Chief Deputy Engineer 419-238-0210

Robert Wilhelm, Superintendent 419-238-0210

Adam Howbert, E.I., S.I., Bridge Engineer 419-238-0210

Tracey Allenbaugh, Administrative Assistant 419-238-0210

Mike Motycka, Drainage Technician 419-238-0210

Rex Marbaugh, Equipment Maintenance Supervisor ... 419-238-0210

Josh Evans, Road Foreman 419-238-0210

Brad Berry, Bridge Foreman 419-238-0210

VINTON

100 E. Main St., Vinton County Courthouse, McArthur, OH
45651-1526

Phone: 740-790-7013
email: rdepue@vintonco.com

District 10, McArthur, 411 Sq. Miles, Pop. 12,853

Education: Ohio University, BSCE

Previous Experience: Construction Engineer/
Manager, McNally Pittsburg Construction,
1974-1984; Engineering Manager, Benedict, Inc./
Engle Construction, 1984-1991; Engineering
Manager/Senior Engineer/DOT Subject Matter
Expert for Prime Contractors for Department
of Energy, Lockheed Martin, Lockheed Martin
Energy Systems, Bechtel Jacobs, Tetra Tech NUS,
Lata Parallax Portsmouth LLC, Fluor Corp.,
and Fluor-Babcock Wilcox XT LLC, 1991-2017;
President, Roy A. DePue and Associates, Inc.,
1986-2018.



Spouse: Sharon

Roy A. DePue, P.E., P.S., Eff. 5/29/2017

Annie Jackson, Administrative Assistant 740-790-7014
Aaron Conley, Tax Map/GIS Manager 740-790-7016
Jason Walker, Road Superintendent 740-790-7050
Jason Eberts, Assistant Road Superintendent 740-790-7051



Cincinnati
513-469-1600

Medina
330-952-1464



Bridge Design/Inspection, Roadway Design, Environmental,
Survey, Design-Build, Right of Way, Site Development

www.palmernet.com

WARREN

210 W. Main St., Lebanon, OH 45036-2009

Phone: 513-695-3301 or 513-925-3301

FAX: 513-695-7714 or 513-925-7714

email: neil.tunison@co.warren.oh.us

District 8, Lebanon, 408 Sq. Miles, Pop. 239,556

Education: University of Cincinnati, BSCE

Previous Experience: Design Engineer, A.M. Kinney, Inc., 3 yrs.; Design Engineer, Wilson & Assoc., Cincinnati, OH 7 yrs.; Bridge Engineer, Warren County Engineer's Office, 3 yrs.; Chief Deputy Engineer, Warren County Engineer's Office, 7 yrs.

Spouse: Connie



Neil F. Tunison, P.E., P.S. Eff. 1/6/1997

Kurt Weber, P.E., P.S., Chief Deputy Engineer

kurt.weber@co.warren.oh.us 513-695-3301

Roy Henson, P.E., P.S., Assistant Engineer

roy.henson@co.warren.oh.us 513-695-3301

Bobbi Apking, Administrative Assistant

bobbi.apking@co.warren.oh.us 513-695-3301

David Mick, P.E., Assistant Engineer

david.mick@co.warren.oh.us 513-695-3301

Amy Fox, Accounting/Payroll Clerk

amy.fox@co.warren.oh.us 513-695-3303

Mark Dawson, Deputy of Operations 513-695-3329

WASHINGTON

103 Westview Ave., Marietta, OH 45750-7085

Phone: 740-376-7430 FAX: 740-376-7085

email: wce@wccgov.org

www.washingtongov.org

District 10, Marietta, 641 Sq. Miles, Pop. 59,942

Education: Ohio University, B.S. Civil Engineering

Previous Experience: Washington County Deputy Engineer, 2011-2012; Washington County Project Engineer 1999-2011.

Spouse: Erica Wright



Roger E. Wright, P.E., P.S., Eff. 1/7/2013

Emily Griffin, Office Manager 740-376-7430

Frank Bland, Highway Superintendent 740-373-2505

Tim January, Bridge Department Manager 740-376-7430

Josh Lucas, P.E., Assistant Engineer 740-376-7430

Eric Smith, P.E., Deputy County Engineer 740-376-7430

Victoria Defreitas, Administrative Assistant 740-376-7430

WAYNE

3151 W. Old Lincoln Way, Wooster, OH 44691-4870

Phone: 330-287-5500 FAX: 330-287-5520

email: sam@wayne-county-engineer.com

www.wayne-county-engineer.com

District 3, Wooster, 598 Sq. Miles, Pop. 116,858



Education: University of Akron, BSCE

Previous Experience: AECOM, Assistant Portage County Engineer, GPD, Wayne County Bridge Engineer, McCoy Associates.

Spouse: Ellen Miller

Scott A. Miller, P.E., P.S., Eff. 1/2/2017

Michelle Hall, Office Manager 330-287-5500
mlh@wayne-county-engineer.com

Andrew D. Jones, Assistant County Engineer 330-287-5500

Ryan P. Marthey, P.E., Roadway/Drainage Engineer 330-287-5500

Eric K. Liew, P.E., P.S., Bridge Engineer 330-287-5500

Stacy Peppard, Tax Map Supervisor 330-287-5496
mapoffice@wayne-ohio.org

WILLIAMS

12953 County Road G, Bryan, OH 43506-9596

Phone: 419-636-2454 Ext. 2101 FAX: 419-636-8687

email: troth@wmscoengineer.com

www.wmscoengineer.com

District 2, Bryan, 421 Sq. Miles, Pop. 37,026



Education: University of Toledo, BSCE

Previous Experience: Private Sector Design Engineer, 14 years; City of Bryan Engineer, 11 years; City of Sandusky Engineer, 2 years.

Spouse: Angela K. Roth

Todd J. Roth, P.E., P.S., Eff. 1/2013

John A. Waterston, P.E., P.S., Chief Deputy Engineer
jwaterston@wmscoengineer.com 419-636-2454 Ext. 2102

Cody R. Frey, P.E., P.S., Deputy Engineer
cfrey@wmscoengineer.com 419-636-2454 Ext. 2103

April Gonzales, Administrative Assistant
agonzales@wmscoengineer.com 419-636-2454 Ext. 2111

Brian Fritsch, P.E., Drainage Engineer
bfritsch@wmscoengineer.com 419-636-2454 Ext. 2121

Rachael Welch, Tax Map
rwelch@wmscoengineer.com 419-636-2454 Ext. 2104

Phil Whittington, Highway Superintendent
pwhittington@wmscoengineer.com 419-636-2454 Ext. 2141

WOOD

1 Court House Square, Wood County Office Building,
Bowling Green, OH 43402-2431

Phone: 419-354-9060 FAX: 419-354-1409

email: jmusteric@woodcountyohio.gov

District 2, Bowling Green, 620 Sq. Miles, Pop. 131,930

Education: University of Toledo, Associate, Engineering Technology; University of Toledo, BSCE

Previous Experience: Chief Deputy, Wood County, 5 years; Owner – J. Musteric & Associates, Fremont, OH, 20 years; Partner – Kusmer, Musteric & Associates, Fremont, OH, 9 ½ years, Engineering Technician – Lester H. Poggemeyer, P.E., P.S., Bowling Green, OH, 4 years.

Spouse: Deborah



John M. Musteric, P.E., P.S., Eff. 1/02/2017

Dana Schrott, Financial Manager419-354-9060
Joan Cherry, P.E., Project Manager Bridges419-354-9060
Jason Sisco, P.E., P.S., Project Manager Roads419-354-9060
Duane Abke, Project Manager Ditch Construction419-354-9060
Eric Losey, Road Superintendent419-354-9071
Jerry Houtz, Assistant Road Superintendent419-354-9071

WYANDOT

320 N. Warpole Street, Upper Sandusky, OH 43351-1198

Phone: 419-294-2330 FAX: 419-294-1627

email: mkohl@co.wyandot.oh.us

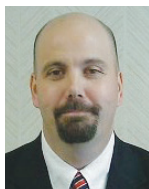
www.wyandotcountyengineer.com

District 1, Upper Sandusky, 406 Sq. Miles, Pop. 21,933

Education: Ohio Northern University, BSCE

Previous Experience: Deputy Engineer, Wyandot County 1997-2008, Engineering Intern, Ohio Department of Transportation 1995-97.

Spouse: Amy



Michael B. Kohl, P.E., P.S. Eff. 1/2009

Terrence R. Wright, P.E., P.S., Chief Deputy Engineer ... 419-294-2330
Dean Leonard, Engineering Technician.....419-294-2330
Sandy S. Packer, Account Clerk419-294-2330
Susanna Frey, Account Clerk419-294-2330
Carl Taylor, Highway Superintendent419-294-2381
Lisa J. Brodman, Tax Map Technician419-294-5212
Grace Fox, Tax Map Technician419-294-5212
Chet Margraf, EI, SI, Assistant County Engineer.....419-294-2330



Rendering by Mark Sherman



CEAO Staff



Dean C. Ringle, P.E., P.S.
Executive Director
Email: dringle@ceao.org

Dean C. Ringle, P.E., P.S., began as CEAO's Executive Director in July 2017. Prior to joining CEAO, Mr. Ringle worked at the Franklin County Engineer's Office for more than 36 years, with the last 17 years serving as the Franklin County Engineer. Throughout his career at the engineer's office, he held positions in construction, surveying, and overall engineering management. During those years Mr. Ringle also served in various capacities and on various committees for CEAO, in addition to being recognized as the 2011 County Engineer of the Year by CEAO and the 2013 National Urban County Engineer of the Year by the National Association of County Engineers. Mr. Ringle received his Bachelor of Science Degrees in Civil Engineering and Surveying from The Ohio State University and is a registered Professional Engineer and Professional Surveyor in Ohio. Mr. Ringle was the 2019-20 National Council of Examiners for Engineering and Surveying (NCEES) president. He spent 25 years as an adjunct faculty member at The Ohio State University's College of Engineering, and serves on the boards of the Ohio State Board of Registration for Professional Engineers and Surveyors, the Ohio Public Works Commission and the OSU Civil, Environmental and Geodetic Engineering Advisory Board.



Amy Lowe
Events Manager
Email: alowe@ceao.org

Amy embarked on her journey at CEAO in August 2017. With a remarkable 18 years of experience in the public sector, she brings a wealth of knowledge from her previous work at the Mid-Ohio Regional Planning

Commission (MORPC) and the Franklin County Engineers Office. As the Events Manager, Amy is the architect behind CEAO's conferences, meetings, and events. Just like a skilled engineer designing a bridge, she meticulously plans each detail, ensuring seamless connections among participants. Whether it's coordinating logistics, managing schedules, or fostering networking opportunities, Amy offers a fascinating blend of creativity and strategic thinking to CEAO. Her educational journey boasts a Bachelor of Business Administration Degree from Mount Vernon Nazarene University.



Kari Gianangeli
Business & Marketing Manager
Email: karig@ceao.org

Kari joined the CEAO team in March of 2020, bringing with her many years of experience as an administrative and legal assistant working with law firms and non-profits in Central Ohio. Kari manages our day-to-day

business operations, integrates marketing strategies to build new supporting member relationships while fostering existing ones, and assists members on using the CEAO events app while providing support on site at all CEAO events. In addition, she keeps our members and sponsors frequently updated through her management of CEAO's growing social media accounts with the intent to cultivate a network for the engineering and surveying professions. Kari graduated summa cum laude from Franklin University with a Bachelor of Science degree majoring in business administration and a minor in marketing. In addition to her roles at CEAO, Kari also works part time as a legal assistant at The Law Office of Charles Mifsud, LLC located in Dublin, Ohio where she has been employed since March of 2009. In her free time, Kari enjoys her volunteer role serving as a support sister with Mommies Matter, a non-profit which assists single mothers, as well as traveling with her husband and three children.



Craig Forrest
CSTP/LBR Manager
Email: cforrest@ceao.org

Craig joined CEAO in May 2023 as the County Surface Transportation Program (CSTP) and Local Bridge Replacement and Rehabilitation (LBR) Program Manager.

Craig's primary responsibility is to work with the CSTP/LBR Committee and ODOT to administer the CSTP and LBR programs. This includes ensuring that projects are selected in accordance with program criteria, that projects are delivered according to schedule, and that the programs remain fiscally balanced.

Craig brings with him over 10 years of operations management in the private sector, 5 of those years involved project management and start up. He holds a Bachelor of Science in Management with a Minor in Business Administration from Ohio University. Craig served on the board of directors of a non-profit for 15 years. In 2018, he, his wife and two friends founded a nonprofit that does outreach work for the homeless in Central Ohio.



Jen Diamond
Administrative Assistant
Email: jdiamond@ceao.org

Jen provides administrative support to CEAO by assisting with conferences, accounting and general office management, as well as additional support with special projects, as needed. Prior to joining CEAO in September,

2023, Jen worked 11 years at Nationwide as an Underwriter, IT Business Analyst and IT Quality Assurance Tester. In addition to working at a nonprofit, Jen has volunteered at school and team sports for her children and the community. Jen graduated from The Ohio State University with a B.S. in Family Relations and Human Development.

CEAO Consultants



Mark Sherman
CEAO Federal Bridge QA/QC Engineer
Cell: 614-406-7119
Email: msherman@ceao.org

Mark Sherman graduated from The Ohio State University in 1979 with a Bachelor of Science in Civil Engineering with a concentration in structures. He started his long career at the Franklin County Engineer's office before graduation in the construction department as a project engineer. He moved over to the bridge department to oversee the bridge maintenance crews, along with design before becoming Bridge Engineer in 1987, then became Dean Ringle's Chief Deputy Engineer in 2001 before retiring in 2017 after 38 years with the county. After a few weeks of retirement, Mark joined the engineering consulting firm of American Structurepoint until 2021. In 2021, Mark joined the CCAO team serving as the Federal Bridge QA/QC Engineer.



Ben Sigall
Legal Counsel
Office: 614-596-3484
Email: ben@sigall.law

Ben Sigall brings sixteen years of wide-ranging legal experience, both in private practice and in government as a city, county, and state prosecutor. He has handled complex civil litigation in state and federal courts, including appellate practice reaching the Supreme Court of The United States. His practice also involves advising businesses on contractual, regulatory, and intellectual property matters. Ben has served as legal counsel for CEAO since 2019. He is a proud graduate of The Ohio State University, *cum laude*, and Duquesne University School of Law, *summa cum laude*.



Michael T. Evans
Legislative Consultant
Cell: 614-560-3929
Email: michael@allphaseconsulting.com

Michael T. Evans, President of AP Consulting, is the contract lobbyist for CEAO. With over 10 years of lobbying experience in advocating and advising trade associations and elected officials with interests at the local, state and federal government levels, Michael has extensive knowledge of both issue and candidate campaign strategy. Her education includes a M.B.A – Specialization in Project Management from Ashland University, Post Graduate Degree – Certified Paralegal from Capital University Law School, and a B.S. in Communication from Ohio University.

ELECTED STATE OFFICIALS

Columbus, Ohio 43215

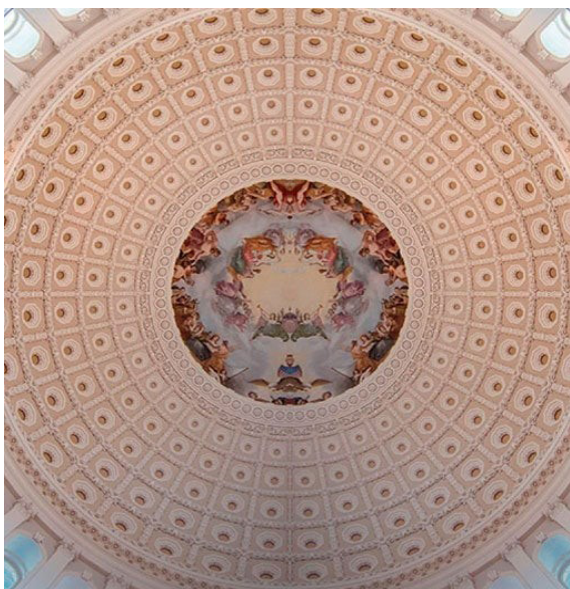
Governor	Mike DeWine (R)	77 S. High St., Fl. 30, 43215	614-466-3555
Lieutenant Governor	Jon Husted (R)	77 S. High St., Fl. 30, 43215	614-466-3555
Attorney General	Dave Yost (R)	30 E. Broad St., Fl. 14, 43215	614-466-4986
Treasurer of State	Robert Sprague (R)	30 E. Broad St., Fl. 9, 43215	614-466-2160
Secretary of State	Frank LaRose (R)	180 E. Broad St., Fl. 16, 43215	614-466-2655
Auditor of State	Keith Faber (R)	88 E. Broad St., Fl. 5, 43215	614-466-4514

UNITED STATES SENATORS

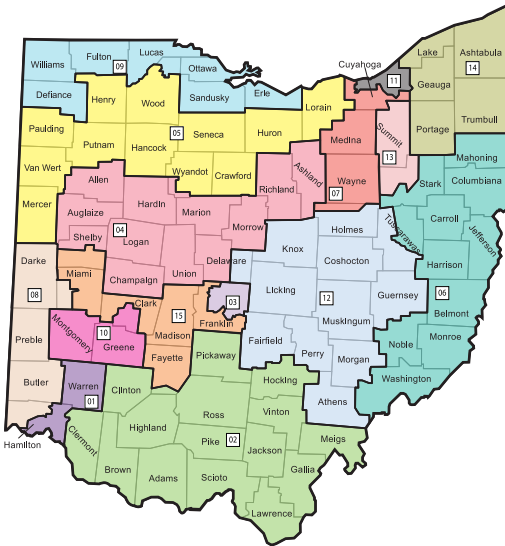
Washington Address:
Senate Office Building
Washington, D.C. 20515

Brown, Sherrod (D) Office:
200 North High Street, Room 614
Columbus, Ohio 43215
(614) 469-2083

Vance, J.D. (R) Office:
37 West Broad Street, Room 300
Columbus, Ohio 43215
(614) 469-6774



118TH CONGRESS, OHIO CONGRESSIONAL DISTRICTS



UNITED STATES REPRESENTATIVES

5 Democrats • 9 Republicans • 1 Vacancy

Washington Address: House Office Building

Washington, D.C. 20515 • Telephone 202-224-3121

DIST.	NAME	PARTY	ADDRESS	PHONE
12	Troy Balderson	(R)	12931 Stonecreek Drive, Pickerington, Ohio 43147	614-523-2555
03	Joyce Beatty	(D)	471 East Broad Street, Suite 1100, Columbus, OH 43215	614-220-0003
11	Shontel Brown	(D)	25200 Chagrin Blvd, Suite 200, Beachwood, OH 44122	216-522-4900
15	Mike Carey	(R)	140 E Town St, Suite 1200, Columbus, OH 43215	202-225-2015
08	Warren Davidson	(R)	8857 Cincinnati-Dayton Rd, Suite 102, West Chester, OH 45069	937-339-1524
06	Vacant	()		
04	Jim Jordan	(R)	3121 West Elm Plaza, Lima, OH 45805	419-999-6455
14	David Joyce	(R)	8500 Station St., Mentor, OH 44060	440-352-3939
09	Marcy Kaptur	(D)	One Maritime Plaza, Room 600, Toledo, OH 43604	419-259-7500
01	Greg Landsman	(D)	11 S. Broadway St., Lebanon, OH 45036	513-409-6188
05	Bob Latta	(R)	1045 North Main Street, Suite 6, Bowling Green, OH 43402	419-354-8700
07	Max Miller	(R)	7335 Ridge Rd., Parma, OH 44129	440-692-6120
13	Emilia Sykes	(D)	121 South Main Street, Akron, OH 44308	330-400-5350
10	Mike Turner	(R)	120 West 3rd Street, Suite 305, Dayton, OH 45402	937-225-2843
02	Brad Wenstrup	(R)	4350 Aicholtz Rd., Suite 110, Cincinnati, OH 45245	513-474-7777

OHIO SENATE



OHIO SENATE

26 Republicans • 7 Democrats
 1 Capitol Square, Columbus, Ohio 43215

MAJORITY CAUCUS LEADERSHIP

Senate President, Matt Huffman	614-466-7584
President Pro Tempore, Kirk Schuring	614-466-0626
Majority Floor Leader, Rob McColley	614-466-8150
Majority Whip, Theresa Gavarone	614-466-8060
Majority Chief of Staff, John Barron	614-466-2510

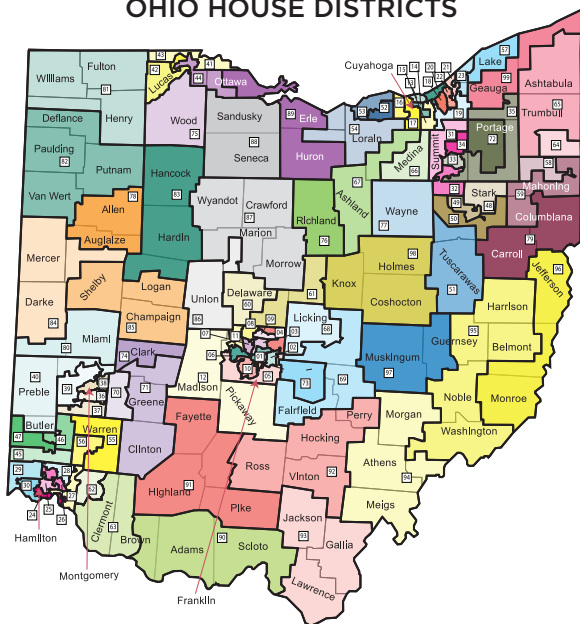
MINORITY CAUCUS LEADERSHIP

Minority Leader, Nickie Antonio	614-466-5123
Assistant Minority Leader, Hearcel Craig.....	614-466-5131
Minority Whip, Kent Smith	614-466-4857
Assistant Minority Whip, Catherine Ingram	614-466-5980
Minority Chief of Staff, Monica Moran	614-466-4371
Senate Clerk, Vincent Keeran	614-466-4900

OHIO SENATE

DIST.	NAME	PARTY	ROOM	HOUSE
6	Niraj Antani	(R)	42	614-466-4538
23	Nickie J. Antonio	(D)	303	614-466-5123
8	Louis Blessing, III	(R)	41	614-466-8068
19	Andrew O. Brenner	(R)	140	614-466-8086
30	Brian M. Chavez	(R)	Gr.Fl.	614-644-6508
18	Jerry C. Cirino	(R)	34	614-644-7718
15	Hearcel F. Craig	(D)	228	614-466-5131
25	Bill DeMora	(D)	52	614-466-4583
24	Matt Dolan	(R)	127	614-466-8056
2	Theresa Gavarone	(R)	138	614-466-8060
10	Robert D. Hackett	(R)	132	614-466-3780
11	Paula Hicks-Hudson	(D)	57	614-466-5204
12	Matt Huffman	(R)	201	614-466-7584
5	Stephen A. Huffman	(R)	40	614-466-6247
9	Catherine Ingram	(D)	56	614-455-5980
14	Terry Johnson	(R)	226	614-466-8082
16	Stephanie Kunze	(R)	129	614-466-5981
31	Al Landis	(R)	38	614-466-5838
4	George F. Lang	(R)	48	614-466-8072
13	Nathan H. Manning	(R)	39	614-644-7613
1	Robert McColley	(R)	222	614-466-8150
32	Sandra O'Brien	(R)	35	614-466-7182
26	Bill Reineke	(R)	221	614-466-8049
3	Michele Reynolds	(R)	128	614-466-8064
27	Kristina D. Roegner	(R)	142	614-466-4823
22	Mark Romanchuk	(R)	49	614-466-7505
33	Michael A. Rulli	(R)	143	614-466-8285
20	Tim Schaffer	(R)	137	614-466-8076
29	Kirk Schuring	(R)	220	614-466-0626
21	Kent Smith	(D)	223	614-466-4857
28	Vernon Sykes	(D)	51	614-466-7041
17	Shane Wilkin	(R)	50	614-466-8156
7	Steve Wilson	(R)	125	614-466-9737

135TH OHIO GENERAL ASSEMBLY OHIO HOUSE DISTRICTS



OHIO HOUSE OF REPRESENTATIVES

66 Republicans • 32 Democrats • 1 Vacancy
77 S. High Street, Columbus, Ohio 43215-6108
800-282-0253 • General Fax 614-644-9494

MAJORITY CAUCUS LEADERSHIP

Speaker of the House, Jason Stephens	614-466-1366
Speaker Pro Tempore, Scott Oelslager	614-752-2438
Majority Floor Leader, Bill Seitz	614-466-8258
Assistant Majority Floor Leader, Jon Cross	614-466-3819
Majority Whip, Jim Hoops	614-466-3760
Assistant Majority Whip, Sharon Ray	614-466-8140

MINORITY CAUCUS LEADERSHIP

Minority Leader, Allison Russo	614-466-8012
Assistant Minority Leader, Dontavius Jarrells	614-466-5343
Minority Whip, Jessica E. Miranda	614-466-8120
Assistant Minority Whip, Michele Grim	614-644-6037

OHIO HOUSE OF REPRESENTATIVES

DIST.	NAME	PARTY	FLOOR	HOUSE
09	Munira Abdullahi	(D)	10	614-466-2473
29	Cindy Abrams	(R)	13	614-466-9091
27	Rachel Baker	(D)	10	614-644-6886
85	Tim Barhorst	(R)	11	614-466-1507
63	Adam C. Bird	(R)	11	614-644-6034
38	Willis E. Blackshear, Jr.	(D)	10	614-466-1607
14	Sean Brennan	(D)	10	614-466-3485
22	Juanita O. Brent	(D)	10	614-466-1408
18	Darnell Brewer	(D)	10	614-466-1414
05	Richard Brown	(D)	10	614-644-6002
57	Jamie Callender	(R)	11	614-644-6074
47	Sara P. Carruthers	(R)	13	614-644-6721
68	Thad Claggett	(R)	11	614-466-1482
88	Gary Click	(R)	12	614-466-1374
40	Rodney Creech	(R)	12	614-466-2960
83	Jon Cross	(R)	14	614-466-3819
58	Al Cutrona	(R)	13	614-466-6107
71	Bill Dean	(R)	12	614-466-1470
15	Richard Dell'Aquila	(D)	11	614-466-3100
35	Steve Demetriou	(R)	11	614-644-5088
26	Sedrick Denson	(D)	10	614-466-1308
10	Dave Dobos	(R)	11	614-466-9690
94	Jay Edwards	(R)	13	614-466-2158
96	Ron Ferguson	(R)	13	614-466-3735
21	Elliott Forhan	(D)	10	614-644-5079
99	Sarah Fowler Arthur	(R)	12	614-466-1405
75	Haraz N. Ghanbari	(R)	13	614-466-8104
43	Michele Grim	(D)	10	614-466-6017
45	Jennifer Gross	(R)	13	614-466-8550
46	Thomas Hall	(R)	13	614-644-5094
51	Brett Hillyer	(R)	11	614-466-8035
97	Adam Holmes	(R)	13	614-644-6014
81	James M. Hoops	(R)	11	614-466-3760
02	Latyna Humphrey	(D)	10	614-466-8010
24	Dani Isaacsohn	(D)	10	614-466-5786
01	Dontavious L. Jarrells	(D)	14	614-466-5343
76	Marilyn S. John	(R)	13	614-466-5802
92	Mark Johnson	(R)	12	614-644-7928
95	Don Jones	(R)	11	614-644-8728
98	Darrell Kick	(R)	11	614-466-2994
84	Angela King	(R)	11	614-466-9624
82	Roy Klopfenstein	(R)	11	614-644-5091
70	Brian E. Lampton	(R)	13	614-644-6020
73	Jeffrey LaRe	(R)	13	614-466-8100
61	Beth Lear	(R)	11	614-466-1431
55	Scott Lipps	(R)	13	614-644-6023
08	Beth Liston	(D)	10	614-644-6030
60	Brian Lorenz	(R)	11	614-644-6711
65	Mike Loychik	(R)	12	614-466-3488
78	Susan Manchester	(R)	12	614-466-6344
52	Gayle Manning	(R)	11	614-644-5076
56	Adam Mathews	(R)	11	614-644-6027
87	Riordan T. McClain	(R)	11	614-644-6265
59	Lauren McNally	(D)	11	614-466-5921

OHIO HOUSE OF REPRESENTATIVES

DIST.	NAME	PARTY	FLOOR	HOUSE
42	Derek Merrin	(R)	13	614-466-1731
06	Adam C. Miller	(D)	10	614-644-6005
53	Joseph A. Miller, III	(D)	10	614-466-5141
69	Kevin Miller	(R)	13	614-466-2500
67	Melanie Miller	(R)	11	614-466-0961
28	Jessica E. Miranda	(D)	14	614-466-8120
03	Ismail Mohamed	(D)	10	614-466-1896
48	Scott Oelslager	(R)	14	614-752-2438
17	Thomas F. Patton	(R)	11	614-466-4895
72	Gail K. Pavliga	(R)	11	614-466-2004
91	Bob Peterson	(R)	11	614-466-3506
04	Beryl Piccolantonio	(D)	10	614-466-4847
90	Justin Pizzulli	(R)	13	614-466-2124
39	Phil Plummer	(R)	13	614-466-8051
80	Jena Powell	(R)	13	614-466-8114
66	Sharon A. Ray	(R)	14	614-466-8140
86	Tracy M. Richardson	(R)	13	614-466-8147
79	Monica Robb Blasdel	(R)	11	614-466-8022
19	Phillip M. Robinson, Jr.	(D)	10	614-644-6041
31	Bill R. Roemer	(R)	11	614-466-5085
44	Elgin Rogers, Jr.	(D)	10	614-466-1401
07	Allison Russo	(D)	14	614-466-8012
64	Nick Santucci	(R)	13	614-466-5441
62	Jean Schmidt	(R)	12	614-466-8134
30	Bill Seitz	(R)	14	614-466-8258
33	Veronica Sims	(D)	10	614-644-6037
13	Michael J. Skindell	(D)	10	614-466-5921
11	Anita Somani	(D)	13	614-466-5358
54	Dick Stein	(R)	14	614-466-9628
93	Jason Stephens	(R)	13	614-466-1366
12	Brian Stewart	(R)	12	614-466-1464
50	Reginald Stoltzfus	(R)	13	614-466-9078
89	D. J. Swearingen	(R)	10	614-644-6011
16	Bride Rose Sweeney	(D)	10	614-466-3350
25	Cecil Thomas	(D)	11	614-466-1645
49	Jim Thomas	(R)	10	614-466-8030
23	Daniel P. Troy	(D)	10	614-466-7251
20	Terrence Upchurch	(D)	10	614-466-7954
34	Casey Weinstein	(D)	11	614-466-1177
36	Andrea White	(R)	13	614-644-6008
77	Scott Wiggam	(R)	11	614-466-1474
41	Josh Williams	(R)	11	614-466-1418
74	Bernard Willis	(R)	11	614-466-2038
32	Vacant	()		
37	Tom Young	(R)	13	614-466-6504

Legislative information up-to-date as of March 1, 2024

ODOT Directors' Office Personnel

2nd Floor, Mail Stop 1000
1980 West Broad Street
Columbus, Ohio 43223
Phone: (614) 466-2336

Jack Marchbanks, Ph.D.
Director

Howard P. Wood
*Assistant Director of Business
and Human Resources*

David Slatzer, P.E.
Chief Engineer & Assistant Director of Transportation Policy

Andy Pusateri
Chief Operating Officer

Mitch Blackford
Assistant Director of Field Operations

Jessica Koren
Executive Assistant to ODOT Director Marchbanks

ODOT Districts



ODOT District Deputy Directors

District 1

Lima
Chris Hughes, P.E.
419-999-6800

District 7

Sidney
John "Bud" O'Brien
937-497-6748

District 2

Bowling Green
Patrick McColley, P.E., S.I.
419-373-4412

District 8

Lebanon
Tammy Campbell, P.E.
513-933-6694

District 3

Ashland
Bob Weaver
419-207-7002

District 9

Chillicothe
Mike Dombrowski
740-774-8833

District 4

Akron
Gery Noirot, P.E.
330-786-2270

District 10

Marietta
Rich Oster
740-568-3901

District 5

Jacksontown
Jason Sturgeon, P.E.
740-323-5202

District 11

New Philadelphia
Tom Corey
330-308-3964

District 6

Delaware
Anthony Turowski, P.E.
740-833-8212

District 12

Garfield Heights
John Picuri, P.E., P.S.
216-584-2000

OHIO COUNCIL OF COUNTY OFFICIALS

AUDITORS.....	614-228-2226
CLERKS OF COURTS	330-643-2210
COMMISSIONERS	614-221-5627
CORONERS.....	614-262-6722
ENGINEERS.....	614-221-0707
JUDICIAL CONFERENCE.....	614-387-9750
PROSECUTING ATTORNEYS.....	614-221-1266
RECORDERS	419-523-6490
SHERIFFS.....	614-431-5500
TREASURERS	614-517-5072

2024 Ohio County Official Associations

BUCKEYE STATE SHERIFFS ASSOCIATION

www.buckeyesheriffs.org

George T. Maier, President
Stark County Sheriff - 330-430-3800
Robert A. Cornwell, Executive Director
614-431-5500

COMMISSIONERS CLERKS AND ENGINEERS ADMINISTRATIVE PROFESSIONALS ASSOCIATION

www.ccc-eapa.org

Emily Bradford, President
Clerk of Commission/Operations Manager
Montgomery County - 937-225-6941

COUNTY AUDITORS ASSOCIATION OF OHIO

www.cao.org

George W. Kitzler, President
Wyandot County Auditor - 419-294-1531
Thomas P. Pappas, Executive Director/Legislative Counsel
614-621-2000

COUNTY COMMISSIONERS ASSOCIATION OF OHIO

www.ccao.org

Chris Abbuhl, President
Tuscarawas County Commissioner - 330-365-3240
Cheryl Subler, Executive Director
614-220-7980

COUNTY ENGINEERS ASSOCIATION OF OHIO

www.ceao.org

Patrick T. Ginnetti, P.E., P.S., President
Mahoning County Engineer
330-799-1581
Dean C. Ringle, P.E., P.S., Executive Director
614-221-0707

COUNTY SANITARY ENGINEERS ASSOCIATION OF OHIO

www.cseao.org

Zachary Mulder, P.E., President
Ottawa County Assistant Sanitary Engineer
419-734-6725

COUNTY TREASURERS ASSOCIATION OF OHIO

www.ohiocountytreasurers.org

Denise Althaus, President
Hardin County Treasurer
419-674-2246
Kevin Futryk, Executive Director
614-221-7157

OHIO CLERK OF COURTS ASSOCIATION

www.occaohio.com

Calvin Freeman, President
Mercer County Clerk of Courts
419-586-6461

OHIO COUNCIL OF COUNTY OFFICIALS

Michele Mumford, President
Shelby County Clerk of Courts
937-498-7221

OHIO JUDICIAL CONFERENCE

www.ohiojudges.org

Paula C. Giulitto, Chair
Portage County Domestic Relations Court
330-297-3880
Paul Pfeifer, Executive Director
614-387-9762

OHIO PROSECUTING ATTORNEYS ASSOCIATION

www.ohiopa.org

Hon. Kevin S. Talebi, President
Champaign County Prosecutor
937-484-1900
Louis Tobin, Executive Director
614-221-1266

OHIO RECORDERS ASSOCIATION

www.ohiorecorders.com

Jessica Markins, President
Athens County Recorder - 740-592-3228

OHIO STATE CORONERS ASSOCIATION

www.ohiocoroners.org

Kevin L. Park, MD, President
Williams County Coroner - 419-633-5436
Association Number - 614-262-6722

Supporting Members

ADR & Associates Ltd.
Advanced Drainage Systems
AECOM
American Concrete Pipe Association
American Structurepoint, Inc.
AMT
Anderzack-Pitzen Construction, Inc.
Anser Advisory
Arcadis
Asphalt Materials, Inc.
Atlas Technical Consultants
AZZ Galvanizing
Bowser-Morner, Inc.
Buckeye Hills Regional Council
Burgess & Niple, Inc.
Carpenter Marty Transportation, Inc.
CESO, Inc.
Civil & Environmental Consultants, Inc.
Contech Engineered Solutions
CT Consultants, Inc.
Country Tyme Land Specialists
DGL Consulting Engineers, LLC
DLZ Corporation
Driver Conditioning Crash Investigation, Inc.
Dunrobin Associates, LLC
E.L. Robinson Engineering
E.P. Ferris & Associates, Inc.
EMH&T, Inc.
Environmental Design Group
Enzo's Cleaning Solutions, LLC
Euthenics, Inc.
Evers Steel Construction
Firelands Supply Co.
Fishbeck

Flexible Pavements of Ohio
Forest City Erectors, Inc.
Gannett Fleming Engineers & Architects, P.C.
GPD Group
Gulfport Energy Corporation
Hammontree & Associates, LTD.
Hannah News Service, Inc.
Info Tech
INFRAME
K.E. McCartney & Associates, Inc.
K & K Systems, Inc.
Kenneth G. Myers Construction Co., Inc.
Kindler & Associates, LLC
Korda/Nemeth Engineering, Inc.
Lake Erie Construction Co.
Lindsay Precast – Ohio Division
LJB Engineering
MasterMind, LLC
Meredith Brothers, Inc.
Michael Baker International, Inc.
Mid Atlantic Maintenance
Mott MacDonald, LLC
ms consultants, inc.
Municipal & Contractors Sealing Products, Inc.
National Gunitite
Northern Concrete Pipe
Nutrien Ag
Ohio CAT
Ohio Concrete
Ohio LTAP Center
Palmer Engineering Co.
PENGWYN
Pennoni Associates Inc.
Phenix Stabilization, LLC
Popa Consulting
Prestress Services Industries
PS Contruction Fabrics, Inc.

R.L. Parsons & Son Equipment Co. Inc.
Redi-Rock of Northern Ohio
Resource International, Inc.
SealMaster
Shaffer, Johnston, Lichtenwalter & Associates, Inc.
SJCA, Inc.
Southeastern Equipment Co., Inc.
Spartan Construction
Stahl Sheaffer Engineering, LLC
Stantec Consulting Service, Inc.
Strand Associates
Surdex Corporation
Tenmile Creek Excavating, LLC
Terracon Consultants, Inc.
The Markosky Engineering Group, Inc.
The McLean Company
TranSystems Corporation of Ohio
U.S. Bridge/Ohio Bridge
Unique Paving Materials Corporation
V & S Columbus Galvanizing LLC
Valley Asphalt Corporation
W.E. Quicksall & Associates, Inc.
Wessler Engineering
Woolpert

Website Sponsors

AMT
DLZ
Driver Conditioning Crash Investigation, Inc.
Dunrobin Associates
Info Tech
Lake Erie Construction Co.
National Gunitite
Spartan Construction

*Supporting members & website sponsors as of 3/4/24.
Please see CEAO website for updates.*

Products & Services Guide

Asphalt

Asphalt Materials Inc.
DLZ Corporation
Flexible Pavements of Ohio
INFRAME
Mid Atlantic Maintenance, Inc.
The McLean Company
Resource International, Inc.
Valley Asphalt Corporation

Bridges

ADR & Associates, Ltd.
American Structurepoint, Inc.
AMT
Carpenter Marty Transportation, Inc.
Contech Engineered Solutions
DLZ Corporation
E.L. Robinson Engineering
E.P. Ferris & Associates, Inc.
Evers Steel Construction
Fishbeck
GPD Group
Hammontree and Associates, Limited
K.E. McCartney & Associates, Inc.
Korda/Nemeth Engineering, Inc.
Lindsay Precast - Ohio Division
LJB Engineering
Michael Baker International
Mott MacDonald, LLC
National Gunite
Popa Consulting
Redi-Rock of Northern Ohio
Resource International, Inc.
Shaffer, Johnston, Lichtenwalter & Associates, Inc.
SJCA Inc
Stahl Sheaffer Engineering
Stantec Consulting Service, Inc.
The Markosky Engineering Group, Inc.
U.S. Bridge
V&S Columbus Galvanizing

Casting, Coating, & Sealants

National Gunitite

Municipal & Contractors Sealing Products

PS Construction Fabrics, Inc.

V&S Columbus Galvanizing

Communication and Management

AECOM

Buckeye Hills Regional Council

Environmental Design Group

Composite Materials

DLZ Corporation

Meredith Brothers, Inc.

PS Construction Fabrics, Inc.

Computer Information & Supplies

MasterMind, LLC

Resource International, Inc.

Concrete

Contech Engineered Solutions

DLZ Corporation

E.L. Robinson Engineering

Lindsay Precast - Ohio Division

Mott MacDonald, LLC

National Gunitite

Northern Concrete Pipe

Ohio Concrete

Prestress Services Industries

Southeastern Equipment Co., Inc.

Redi-Rock of Northern Ohio

Construction

AMT

Anderzack-Pitzen Construction, Inc.

E.L. Robinson Engineering

Evers Stell Construction

Fishbeck

Forest City Erectors, Inc.

Info Tech, Inc.

INFRAME

K.E. McCartney & Associates, Inc.

Kenneth G. Myers Construction Co., Inc.

Lake Erie Construction Co.
Lindsay Precast - Ohio Division
Mott MacDonald, LLC
Southeastern Equipment Co., Inc.
Spartan Construction
Valley Asphalt Corporation

Construction Materials Testing

Atlas Technical Consultants
DLZ Corporation
Terracon Consultants, Inc.

Culvert Rehab

Anderzack-Pitzen Construction, Inc.
Carpenter Marty Transportation, Inc.
Contech Engineered Solutions
DLZ Corporation
E.L. Robinson Engineering
Environmental Design Group
Fishbeck
Hammontree and Associates, Ltd.
Korda/Nemeth Engineering, Inc.
LJB Engineering
Meredith Brothers, Inc.
Michael Baker International
Mott MacDonald, LLC
Municipal & Contractors Sealing Products
National Gunitite
Northern Concrete Pipe
Shaffer, Johnston, Lichtenwalter & Associates, Inc.
Spartan Construction
Stantec Consulting Service, Inc.

Drainage & Stormwater

ADR & Associates, Ltd.
American Concrete Pipe Association
Anderzack-Pitzen Construction, Inc.
Carpenter Marty Transportation, Inc.
CESO, Inc.
Civil & Environmental Consultants, Inc.
Contech Engineered Solutions
DLZ Corporation
E.L. Robinson Engineering
Environmental Design Group

Fishbeck
GPD Group
Hammontree and Associates, Ltd.
K.E. McCartney & Associates, Inc.
Korda/Nemeth Engineering, Inc.
Lindsay Precast – Ohio Division
LJB Engineering
Meredith Brothers, Inc.
Michael Baker International
Mott MacDonald, LLC
National Gunitite
Northern Concrete Pipe
Resource International, Inc.
Shaffer, Johnston, Lichtenwalter & Associates, Inc.
Stantec Consulting Service, Inc.
The Markosky Engineering Group, Inc.

Engineering, Planning, and Site Design

ADR & Associates, Ltd.
AECOM
American Structurepoint, Inc.
AMT
Anser Advisory
Atlas Technical Consultants
Bowser-Morner, Inc.
Burgess & Niple, Inc.
Carpenter Marty Transportation, Inc.
CESO, Inc.
Civil & Environmental Consultants, Inc.
Contech Engineered Solutions
CT Consultants, Inc.
DGL Consulting Engineers, LLC
DLZ Corporation
E.L. Robinson Engineering
E.P. Ferris & Associates, Inc.
EMH&T Inc.
Euthenics, Inc.
Evers Steel Construction
Fishbeck
Gannett Fleming Engineers & Architects, P.C.
GPD Group
INFRAME
Korda/Nemeth Engineering, Inc.

LJB Engineering
Michael Baker International
Mott MacDonald, LLC
ms consultants, inc.
Ohio Concrete
Palmer Engineering Co.
Pennoni
Resource International, Inc.
Shaffer, Johnston, Lichtenwalter & Associates, Inc.
SJCA Inc
Stahl Sheaffer Engineering
Strand Associates, Inc.
Terracon Consultants, Inc.
The Markosky Engineering Group, Inc.
TranSystems Corporation
W.E. Quicksall & Associates, Inc.
Wessler Engineering
Woolpert

Environmental Equipment

Southeastern Equipment Company

Equipment Distributor

Ohio CAT
PENGWYN
Southeastern Equipment Company

Geographic Information Systems (GIS)

Civil & Environmental Consultants, Inc.
DLZ Corporation
EMH&T Inc.
Environmental Design Group
E.P. Ferris & Associates, Inc.
GPD Group
LJB Engineering
MasterMind, LLC
Resource International, Inc.
Stahl Sheaffer Engineering
Stantec Consulting Service, Inc.
Surdex Corporation
Woolpert

Inspection Services

ADR & Associates, Ltd.

AECOM

Atlas Technical Consultants, Inc.

Carpenter Marty Transportation, Inc.

Civil & Environmental Consultants, Inc.

DLZ Corporation

Environmental Design Group

E.P. Ferris & Associates, Inc.

Euthenics, Inc.

INFRAME

K.E. McCartney & Associates, Inc.

Korda/Nemeth Engineering, Inc.

Mott MacDonald, LLC

National Gunitite

Resource International, Inc.

Spartan Construction

Stantec Consulting Service, Inc.

Terracon Consultants, Inc.

Wessler Engineering

Woolpert

Land Records Modernization/Tax Map

DLZ Corporation

Resource International, Inc.

Permitting

Atlas Technical Consultants, Inc.

EMH&T

Photogrammetric Mapping

Carpenter Marty Transportation

EMH&T

E.P. Ferris & Associates, Inc.

LJB Engineering

MasterMind, LLC

Surdex Corporation

Woolpert

Pipes

American Concrete Pipe Association

Contech Engineered Solutions

E.L. Robinson Engineering

Fishbeck

National Gunitite

Roadway Maintenance and Materials

Asphalt Materials Inc.
Contech Engineered Solutions
E.L. Robinson Engineering
Fishbeck
Firelands Supply Co.
INFRAME
K.E. McCartney & Associates, Inc.
Kindler & Associates, LLC
Meredith Brothers, Inc.
Mid Atlantic Maintenance, Inc.
Mott MacDonald, LLC
Ohio Concrete
PENGWYN
PS Contruction Fabrics, Inc.
R.L. Parsons & Son Equipment Co. Inc.
SealMaster
Shaffer, Johnston, Lichtenwalter & Associates, Inc.
Valley Asphalt Corporation

Safety

Carpenter Marty Transportation, Inc.
DLZ Corporation
Driver Conditioning Crash Investigation, Inc.
Environmental Design Group
K&K Systems, Inc.
Lake Erie Construction Co.
LJB Engineering
MasterMind, LLC
Mott MacDonald, LLC
Resource International, Inc.

Signs and Markers

DLZ Corporation
Firelands Supply Co.
Fishbeck
K&K Systems, Inc.
Lake Erie Construction Co.
Mid Atlantic Maintenance
Mott MacDonald, LLC

Surveying

AECOM

American Structurepoint, Inc.

AMT

Carpenter Marty Transportation, Inc.

CESO, Inc.

Civil & Environmental Consultants, Inc.

DLZ Corporation

E.L. Robinson Engineering

E.P. Ferris & Associates, Inc.

EMH&T Inc.

Euthenics, Inc.

Fishbeck

GPD Group

Hammontree & Associates, Limited

INFRAME

K.E. McCartney & Associates, Inc.

Korda/Nemeth Engineering, Inc.

LJB Engineering

Shaffer, Johnston, Lichtenwalter & Associates, Inc.

SJCA Inc

Resource International, Inc.

Stahl Sheaffer Engineering

Stantec Consulting Service, Inc.

Surdex Corporation

Woolpert

Traffic Control

Carpenter Marty Transportation, Inc.

DLZ Corporation

E.L. Robinson Engineering

Fishbeck

Lake Erie Construction Co.

Michael Baker International

Mid Atlantic Maintenance, Inc.

Mott MacDonald, LLC

Guide up-to-date as of 3/4/24.

Please see CEAO website for updates.

Our Services



- Construction Management
- Campgrounds & Camps
- Economic Development
- EDG Creative
- Environmental & Ecological Services
- GIS Services
- Grants & Funding
- Green & Blue Infrastructure
- Parks & Trails
- Site Development
- Surveying
- Transportation Engineering
- Water Resources

Serving Communities throughout Ohio
envdesigngroup.com | 800.375.1390

Your Strategic Geospatial Resource

- Aerial imagery acquisition
- Digital orthoimagery
- Lidar acquisition and processing
- Digital mapping



Cornell Rowan, CP
Sr. Project Manager
cornellr@surdex.com



Stormwater | Drinking Water
Wastewater



Check out
our Ohio
resources!

Eric Davis | 419.615.8708
ericd@wesslerengineering.com

Bluffton | Grove City

There is no water problem we can't solve **together.**



E.L. ROBINSON ENGINEERING

*A Full Service Civil Engineering Firm with more than four decades of
established experience and proven performance.*

Bridge and Structural Engineering • Transportation and
Roadway Engineering • Geotechnical Engineering • Hydraulics
& Wastewater Systems • Oil & Natural Gas • Construction
Administration • Site Development • Land Planning

Columbus

614.586.0642

Cleveland

216.452.1890

www.elrobinsonengineering.com

McClean



www.themccleancompany.com

Distributors For:

Wirtgen
Vogele
HAMM
Kleeman
Midland

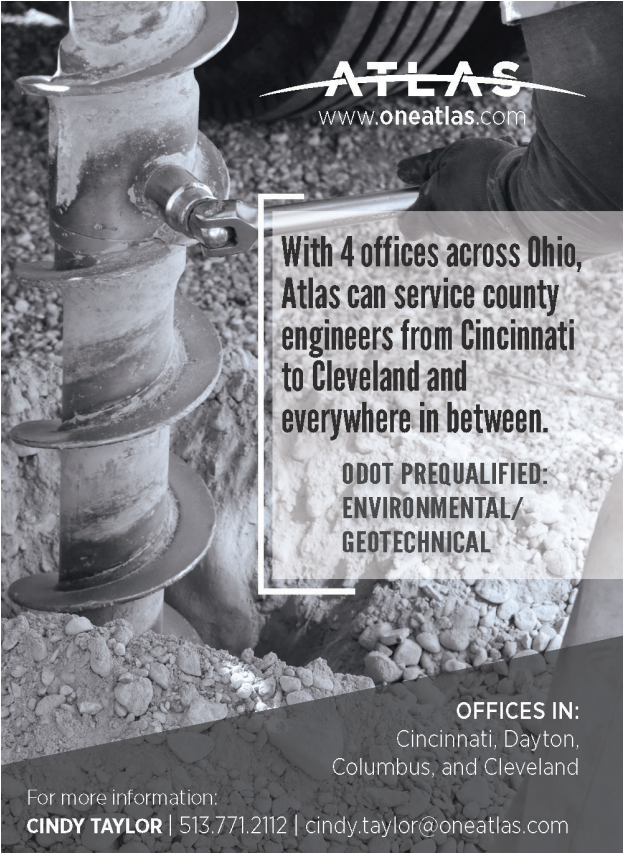
Leeboy
Rosco
Cimline
Falcon



6681 Chittenden Road
Hudson, Ohio 44236
Phone: (330) 655-5900
Fax: (330) 655-5969

3155 E. 17th Avenue
Columbus, Ohio 43219
Phone: (614) 475-2880
Fax: (614) 475-0069

8131 Regal Lane
West Chester, Ohio 45069
Phone: (513) 777-5556
Fax: (513) 777-4494



ATLAS

www.oneatlas.com

With 4 offices across Ohio,
Atlas can service county
engineers from Cincinnati
to Cleveland and
everywhere in between.

**ODOT PREQUALIFIED:
ENVIRONMENTAL/
GEOTECHNICAL**

OFFICES IN:

Cincinnati, Dayton,
Columbus, and Cleveland

For more information:

CINDY TAYLOR | 513.771.2112 | cindy.taylor@oneatlas.com

Michael Baker

INTERNATIONAL

ADR
ADR & ASSOCIATES

An Employee Owned Company



LAKE ERIE CONSTRUCTION

HIGHWAY SAFETY CONTRACTOR

GUARDRAIL

BRIDGE RAIL

ATTENUATORS

TRAFFIC SIGNS

EROSION CONTROL

CHAIN LINK FENCE

FARM FENCE

VANDAL PROTECTION FENCE

NORWALK, OHIO 44857
PH 419/668-3302 FAX 419/668-3314



**TRENCHLESS
TECHNOLOGIES**

ODOT certified DBE

STORM SEWER REHABILITATION

PVC Form & Fold Lining

CCTV & Laser Profiling

HDPE Slip lining

Cellular grouting

Pin Point Repairs

Jet/Vac Cleaning

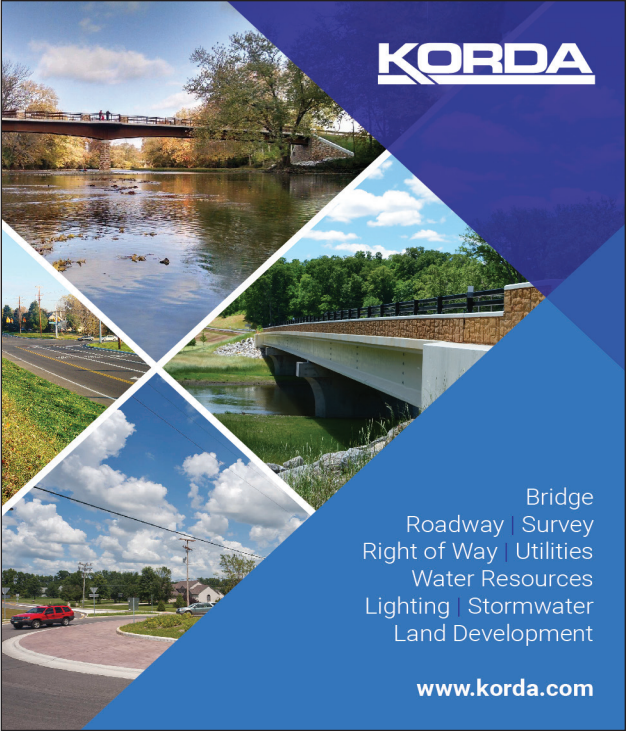
spartanconstruction.com

Contact: Doug Brossart 859-393-4356

1619 Distribution Dr., Burlington KY 41005 Phone 859-371-3538



KORDA



Bridge
Roadway | Survey
Right of Way | Utilities
Water Resources
Lighting | Stormwater
Land Development

www.korda.com



Main Office: 614-488-2861

Sales: 614-546-9212

www.pengwyn.com

PENGWYN

Your Hydraulic Leader + Truck Upfitter

Centrally Located in Columbus, OH



2550 West Fifth Avenue

Columbus, OH 43204

An outline of the state of Ohio with the number 101 inside.

CEAO Roster Advertisers Index

ADR	99
American Structurepoint	2
Asphalt Materials	31
Atlas Technical Consultants	99
Burgess & Niple	11
Carpenter Marty	8
Civil & Environmental Consultants	18
CT Consultants	2
DGL Consulting Engineers, LLC	24
E.L. Robinson Engineering	98
Environmental Design Group	97
Firelands Supply Co.	4
Fishbeck	18
K.E. McCartney & Associates, Inc.	44
Korda	101
Lake Erie Construction, Co.	100
LJB Engineering	51
Mastermind.....	1
Michael Baker International	99
ms consultants, inc.	15
National Gunite	Outside Back Cover
Ohio Cat	48
Ohio LTAP.....	6
Ohio LTAP.....	Inside Back Cover
Palmer Engineering	67
PENGWYN.....	101
RL Parsons	8
Shaffer, Johnston, Lichtenwalter & Assoc.	55
Southeastern Equipment	3
Spartan Construction	100
Stantec	43
Surdex	97
The McLean Company	98
TranSystems	35
US Bridge/Ohio Bridge	Inside Front Cover
Wessler Engineering	97

Ohio's Local Technical Assistance Program (LTAP)

Providing Ohio's local governments training and technical assistance in the areas of safety, workforce development, infrastructure management and organizational excellence.

PROJECT MANAGEMENT



UAS DRONE eLEARNING



Let us help develop your career path with our available trainings



CONSTRUCTION INSPECTION

750+



TRANSPORTATION FOCUSED COURSES

*Available 24-7...
Online On-Demand...
At your own pace.*

transportation.ohio.gov/ltap





AMERICA'S PIPELINE SHOTCRETE SPECIALIST

PROUD PARTNER TO OHIO MUNICIPALITIES

As storm and sanitary sewer system rehabilitation specialists, there are few problems our experienced team hasn't tackled and solved. We understand the fastest and most economical ways to utilize trenchless technology and structural shotcrete to solve the growing issues of the United States' infrastructure. National Gunite's experienced field leadership and management team has a combined 100+ years of experience in structural pipeline rehabilitation. Call us today to see how we can help on your next project.

YOUR TURN-KEY PIPE SOLUTION



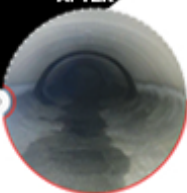
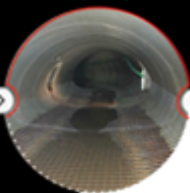
CULVERT REHABILITATION

Corrugated metal pipe was and is still widely used to replace failing culverts and only has a lifespan of ± 30 years, but National Gunite can apply shotcrete to extend the lifespan another 50+ years.

BEFORE

DURING

AFTER



ENGINEERED TO CUSTOM SPECIFICATION TO BE THE MOST COST-EFFECTIVE, DURABLE, AND OPTIMIZED STRUCTURAL DESIGN FOR YOUR REPAIR.

ADDITIONAL SERVICES



**SANITARY SEWER
REHABILITATION**



**STORM SEWER
REHABILITATION**



**BRIDGE
REHABILITATION**

**TIM
MARTIN**

Western Regional Director

📞 317-426-2205 📱 317-749-6007

✉️ tmartin@nationalgunite.com

www.nationalgunite.com — Learn more on our website

