



George V. Voinovich Bridge Project




August 14, 2014
Presented by: Dave Lastovka & Thomas Hyland


Trumbull-Great Lakes-Ruhlin
a joint venture



Cleveland Innerbelt Corridor I-90



Trumbull-Great Lakes-Ruhlin
a joint venture



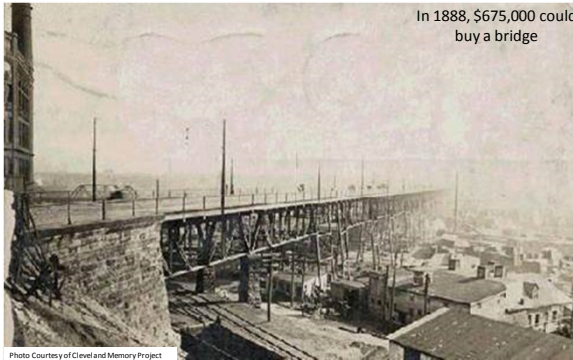
Regional Reference Map



Trumbull-Great Lakes-Ruhlin
a joint venture



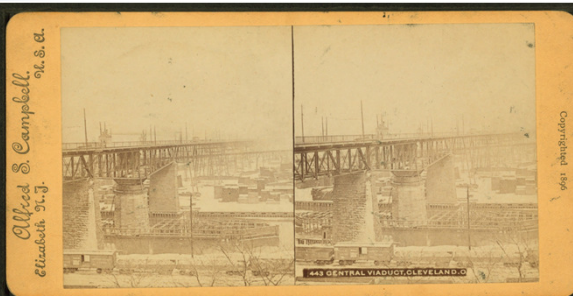
Central Viaduct Bridge: The Original River Crossing



In 1888, \$675,000 could buy a bridge

Photo Courtesy of Clevel and Memory Project

Central Viaduct Bridge: The Original River Crossing



Alfred D. Campbell
Elizabeth, N.J.
Oct. 2, 1891

Copyright 1996

443 CENTRAL VIADUCT, CLEVELAND, OH

Photo Courtesy of Clevel and Memory Project

Trumbull-Great Lakes-Ruhlin
a joint venture

GEORGE V. VOINOVICH BRIDGE

1910-Industry and Commerce Grow

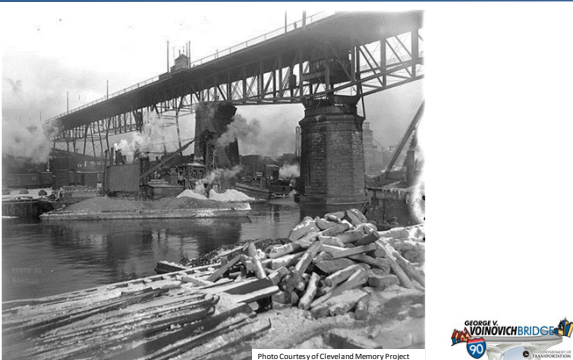


Photo Courtesy of Clevel and Memory Project

GEORGE V. VOINOVICH BRIDGE

1912-Overhead Truss Replaces Swing

(This undated image is from 1912-1939)



Photo Courtesy of Cleveland Memory Project

Innerbelt Bridge: 1959-2013





Photo Courtesy of Mr Z-man

Trumbull-Great Lakes-Ruhlin
a joint venture



Innerbelt Bridge: 1959-2013



Trumbull-Great Lakes-Ruhlin
a joint venture




Cleveland's Innerbelt Plan: More than Just a Bridge



Trumbull-Great Lakes-Ruhlin
a joint venture

GEORGE A. VOINOVICH BRIDGES

Westbound bridge



Trumbull-Great Lakes-Ruhlin
a joint venture

GEORGE A. VOINOVICH BRIDGES

Before you know it....(Fall 2016)



Trumbull-Great Lakes-Ruhlin
a joint venture

GEORGE A. VOINOVICH BRIDGES


Key Project Details


- 1959 Deck Truss
 - 2721' Deck Truss, 9 spans, 400' max, 8 lanes of traffic—minimal shoulders
- CCG1-2010-2013 – New I-90 Westbound Bridge – Delta Girder
 - 3092' long, 9 delta spans, 380' max, 5 lanes of traffic—full 12' shoulders
 - Unit 1-409', 206' max; Unit 3-840', 245' max; total 4341'
 - Value Based Design Build: Walsh-HNTB-HDR - \$293M
- CCG2-2013-2016 – New I-90 Eastbound Bridge – Delta Girder (modified)
 - 3007' long, 10 delta spans, 361' max, 5 lanes of traffic—full 12' shoulders
 - Unit 3-908' long; 257' max; total 3915'
 - Value Based Design Build: TGR-URS-Parsons Brinkerhoff - \$273M


Trumbull-Great Lakes-Ruhlin
a joint venture


GEORGE A. VOINOVICH BRIDGE

Cleveland Innerbelt Plan – Why?

 **Condition**

 **Congestion**

 **Crashes**

 **Context**

Trumbull-Great Lakes-Ruhlin
a joint venture

GEORGE A. VOINOVICH BRIDGE

Community Involvement

 **Workshops**

 **Stakeholders**

 **Neighborhoods**

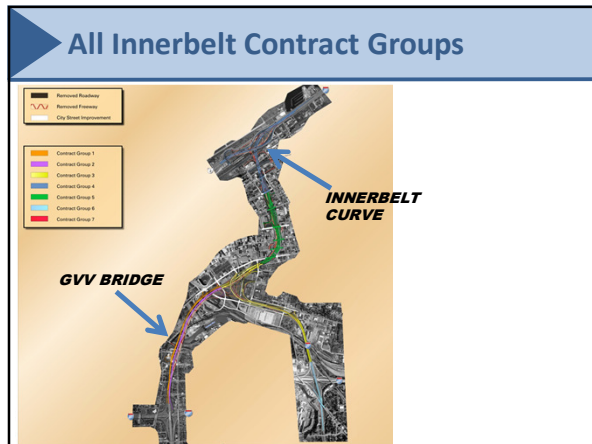
 **Businesses**

 **Institutions**

 **Public Agencies**

Trumbull-Great Lakes-Ruhlin
a joint venture

GEORGE A. VOINOVICH BRIDGE



Design-Build Process

- CCG1–Value Based Design-Build (ARRA Stimulus project)
 - RFQ 4 Bidders->shortlist to 3
 - Received 3 Technical Proposals/Price Proposals
 - 1 bidder determined to be “non-responsive”; 2nd bidder sued project over technical detail; suit dismissed
 - Largest project in ODOT’s History (\$293M)
 - First Value Based Design Build Project in ODOT’s History

Trumbull-Great Lakes-Ruhlin
a joint venture

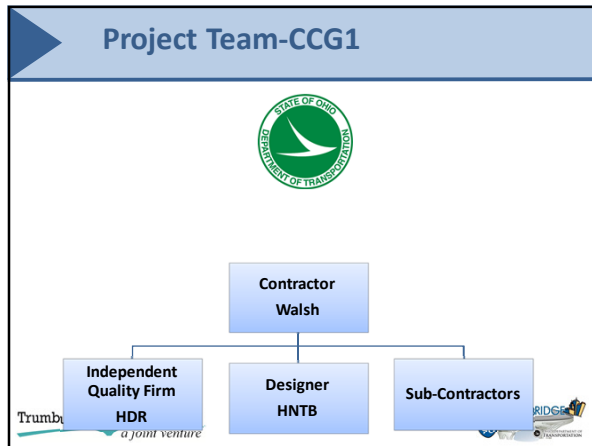
GEORGIA'S VOINOVICH BRIDGE

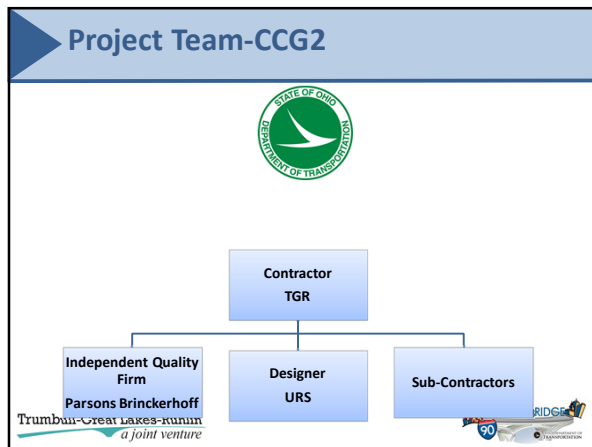
Design-Build Process

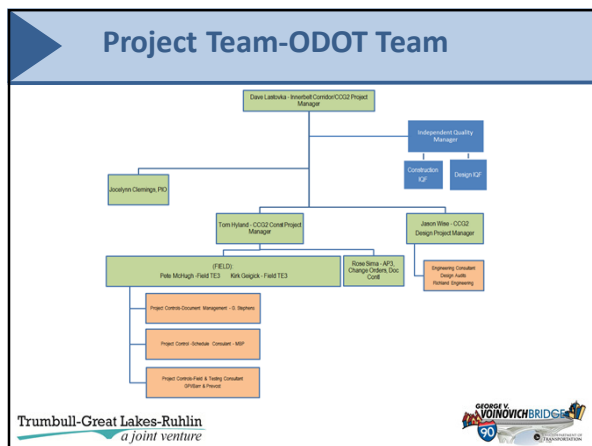
- CCG2 Started as ODOT’s first Design-Build-Finance Project
 - RFQ 4 Bidders->shortlist to 3;
 - Received 3 Technical Proposals/Price Proposals
 - Removed financing piece before bid-Ohio bonded future revenue off of Ohio Turnpike to fund project
 - No challenges to project award
 - Bid Price \$273M

Trumbull-Great Lakes-Ruhlin
a joint venture

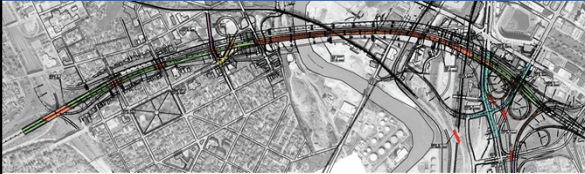
GEORGIA'S VOINOVICH BRIDGE








What Will Be Built



Trumbull-Great Lakes-Ruhlin
a joint venture

GEORGE W. VOINOVICH BRIDGE


What Will Be Built



Trumbull-Great Lakes-Ruhlin
a joint venture


GEORGE W. VOINOVICH BRIDGE

What Will Be Built



Trumbull-Great Lakes-Ruhlin
a joint venture

GEORGE W. VOINOVICH BRIDGE




Downtown/I-77 South Ramp Changes as Part of the Eastbound Bridge Project

GEORGE V. VOINOVICH BRIDGE
90
ILLINOIS DEPARTMENT OF TRANSPORTATION



2014-2016

Ontario & E 9th ramps to I-77 south are removed, opening green space. Traffic is rerouted via E 14th & Ontario/Orange.




New Gateways to Downtown

Ontario Street Portal



E 9th Street Portal



CCG1 Portal Concept



Trumbull-Great Lakes-Ruhlin
a joint venture

GEORGE V. VOINOVICH BRIDGE
90
ILLINOIS DEPARTMENT OF TRANSPORTATION

Old Central Viaduct


Western Reserve Fire Museum



Trumbull-Great Lakes-Ruhlin
a joint venture

GEORGE & VOINOVICH BRIDGES


Old Central Viaduct-Actual



Trumbull-Great Lakes-Ruhlin
a joint venture

GEORGE & VOINOVICH BRIDGES

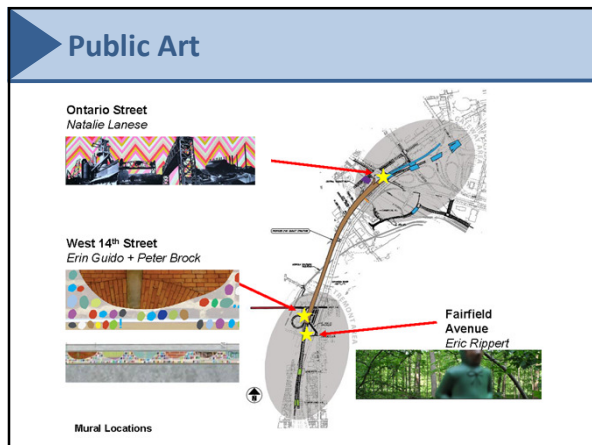
Old Central Viaduct: Scenic Overlook

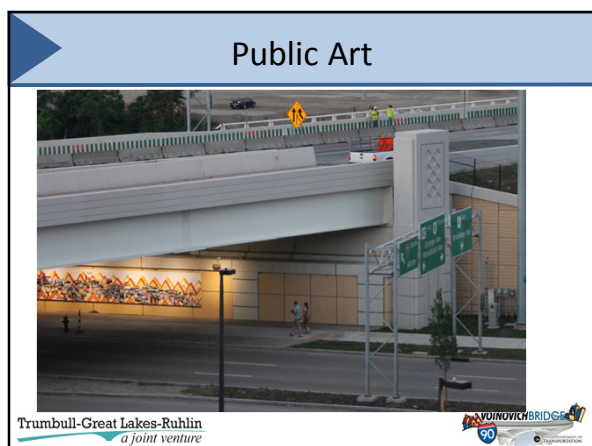


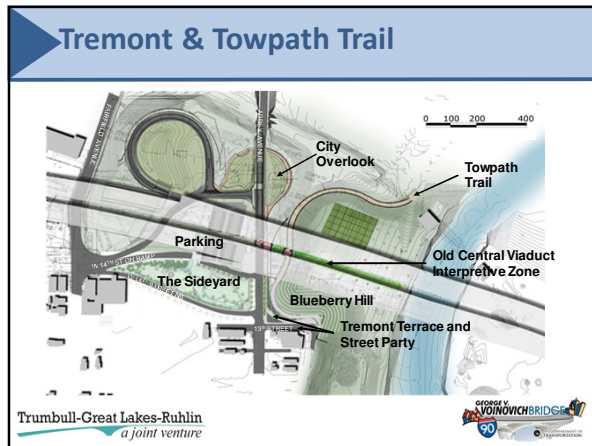
Trumbull-Great Lakes-Ruhlin
a joint venture

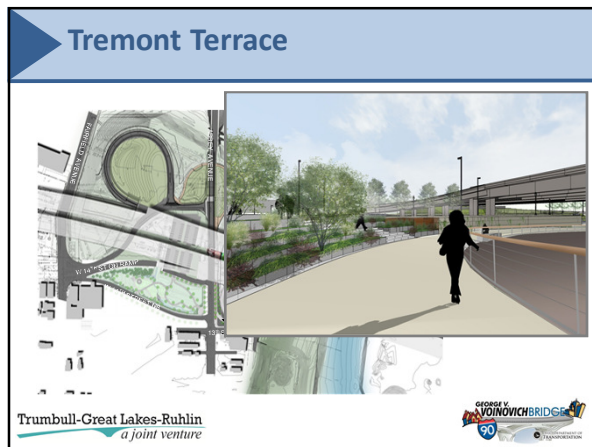
GEORGE & VOINOVICH BRIDGES

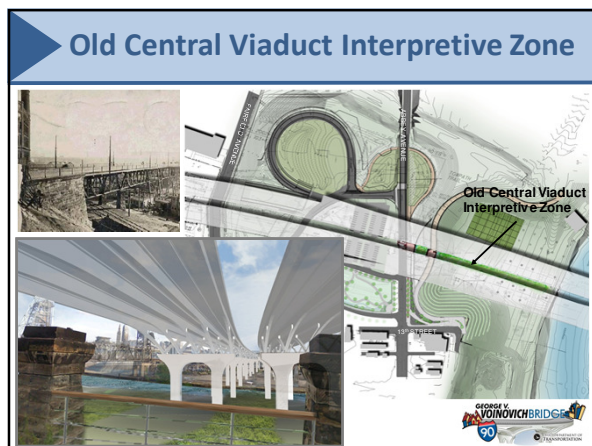




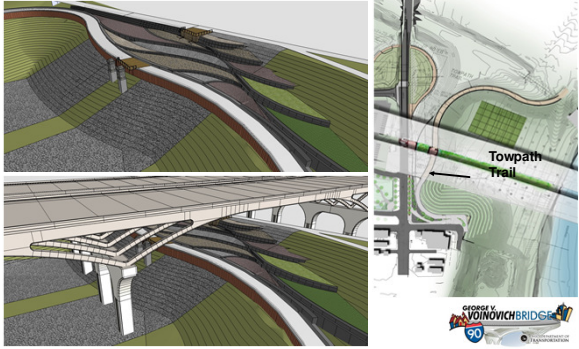








Towpath Trail




Construction & Demolition Challenges



Trumbull-Great Lakes-Ruhlin
a joint venture

GEORGE & VOINOVICH BRIDGES

Demolishing the 1959 Innerbelt Bridge




Trumbull-Great Lakes-Ruhlin
a joint venture

March 6, 2014

GEORGE & VOINOVICH BRIDGES

Demolishing the 1959 Innerbelt Bridge




Trumbull-Great Lakes-Ruhlin
a joint venture

March 11, 2014

GEORGE A. VOINOVICH BRIDGE

Demolishing the 1959 Innerbelt Bridge




Trumbull-Great Lakes-Ruhlin
a joint venture

March 6, 2014

GEORGE A. VOINOVICH BRIDGE

Demolishing the 1959 Innerbelt Bridge




Trumbull-Great Lakes-Ruhlin
a joint venture

April 16, 2014

GEORGE A. VOINOVICH BRIDGE

Demolishing the 1959 Innerbelt Bridge




Trumbull-Great Lakes-Ruhlin
a joint venture

May 21, 2014

GEORGE W. VOINOVICH BRIDGE

ONTARIO

Demolishing the 1959 Innerbelt Bridge

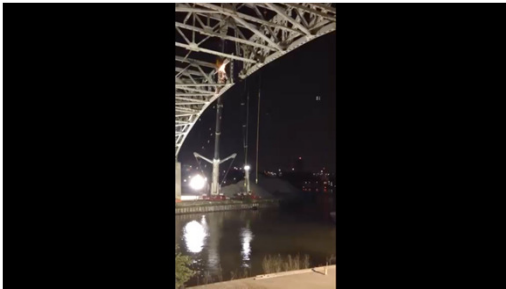


Trumbull-Great Lakes-Ruhlin
a joint venture

May 30, 2014

GEORGE W. VOINOVICH BRIDGE


Demolishing the 1959 Innerbelt Bridge



Trumbull-Great Lakes-Ruhlin
a joint venture


GEORGE W. VOINOVICH BRIDGE

Demolishing the 1959 Innerbelt Bridge

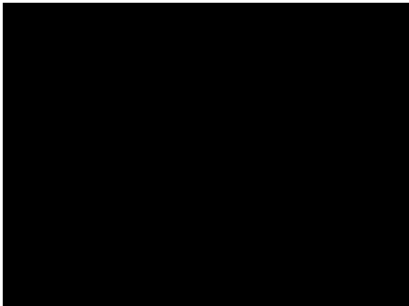


Trumbull-Great Lakes-Ruhlin
a joint venture

June 6, 2014




Demolishing the 1959 Innerbelt Bridge



Trumbull-Great Lakes-Ruhlin
a joint venture

July 12, 2014



Before you know it....(Fall 2016)



Trumbull-Great Lakes-Ruhlin
a joint venture



How To Stay In Touch

Project website: www.Innerbelt.org

Email list-sign up on homepage of website:

- Traffic updates
- Construction Activities
- Links to Quarterly Newsletters

Send us a message: Info@Innerbelt.org

Project Hotline: 216-344-0069
or toll free 855-803-5280




How To Stay In Touch: Social Media

Facebook: Facebook.com/Innerbelt

Twitter: @ODOT_Innerbelt

Flickr Photostream: Flickr.com/Innerbelt

Instagram Photostream: @ODOT_Innerbelt





