





IT STARTS WITH THE MIX

Proper testing requirements:

-  Air Entrainment Testing
-  Slump Testing
-  Yield Percentage
-  Test Break Cylinders

If Entrained Air and Slump are incorrect you should
not place the concrete!





POUR REQUIREMENTS



TEST PROCEDURES



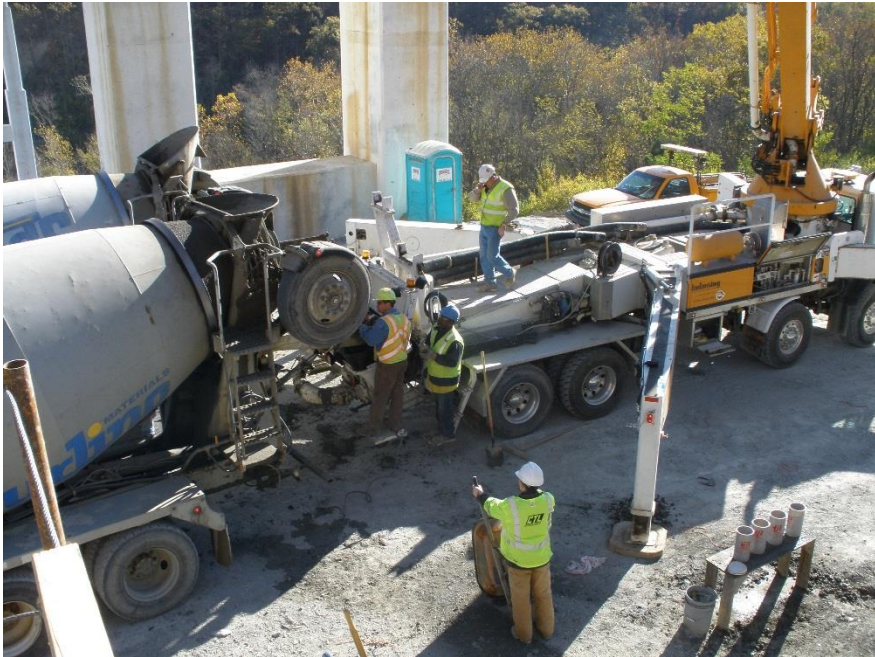
FOUR PRIMARY PLACING METHODS

-  Chute
-  Pump
-  Crane & Bucket
-  Conveyor

CHUTE



PUMP



CRANE & BUCKET



CONVEYOR



PLACING SEQUENCE



Multiple concrete placement procedure



Pump truck from structure

PLACING

- ⌚ Time is of the essence
- ⌚ Proper vibration is key
- ⌚ Do not add water
- ⌚ Do not over finish
- ⌚ **DO NOT ADD WATER**

PLACING



PLACING



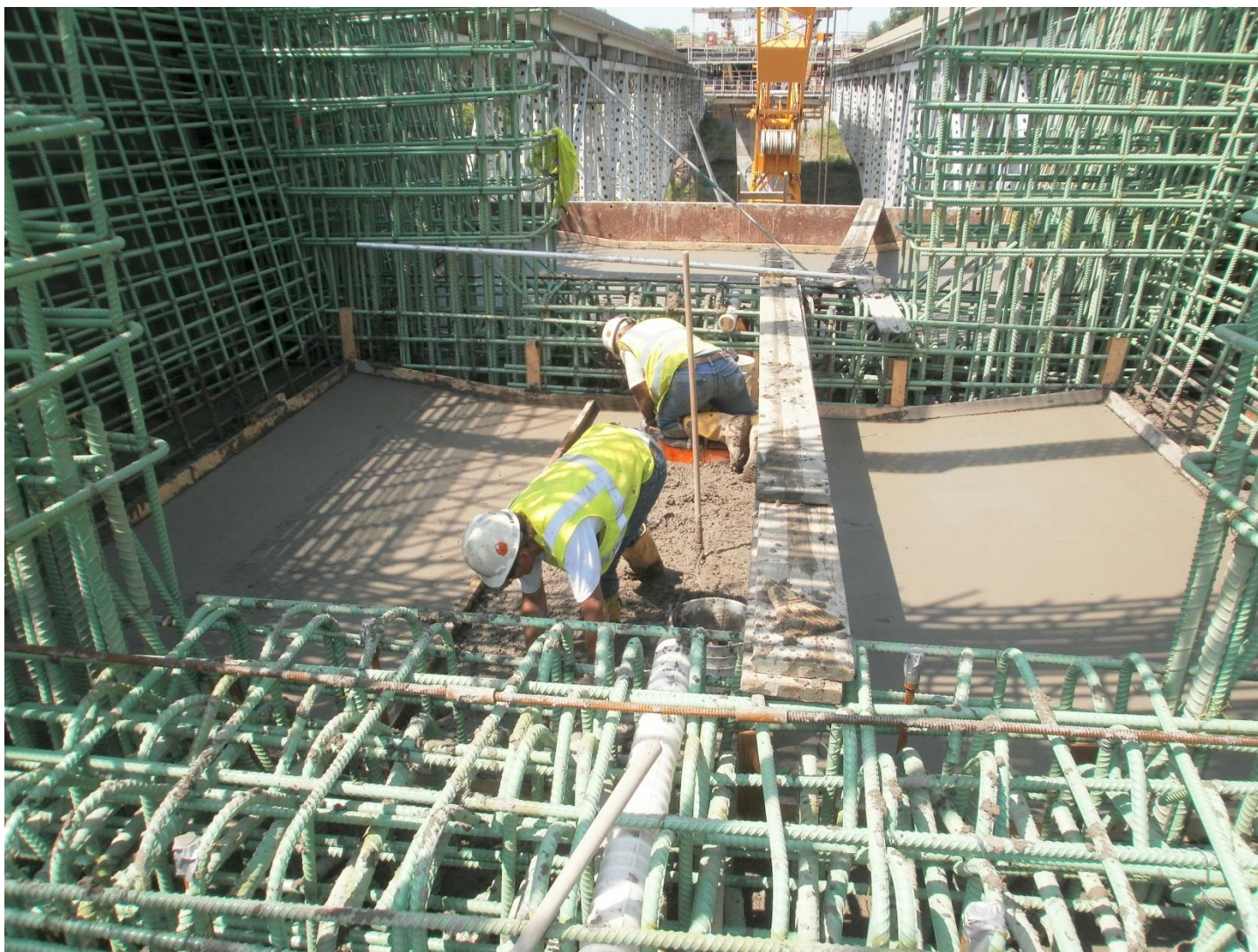
IMPROPER PLACEMENT CONSEQUENCES



FINISHING

 Never use water to finish the surface of any concrete

PROPER FINISHING



IMPROPER FINISHING CONSEQUENCES



CURING

- ① Placing, finishing, and curing should be a smooth continuous operation
- ① Curing compound applied
- ① Concrete shall be covered with wetted burlap

CURING



WERE WE BEGAN



6566 CONCRETE TRUCKS LATER....



QUESTIONS

