



Family-owned and operated for over 30 years

**We have all ACPA certified operators with safety
being our #1 priority!**

Email:

Terry - terry@buckeyepumping.com - CEO/Pump Sales

Josh - josh@buckeyepumping.com - President

Tara - tara@buckeyepumping.com - Office Manager

PUMPING



OR



CONVEYOR



WHAT IS A CONCRETE PUMP

used to place concrete only in
an area not reachable with the
use of a ready mix truck.

WHY USE A CONCRETE PUMP



- ▶ Access
- ▶ Elevated Areas
- ▶ Volume



WHAT IS A CONVEYOR

used to place concrete, gravel, topsoil and even mulch.

Most efficient for high volume, low slump, low clearance and placement of gravel

WHY USE A CONVEYOR



- ▶ Volume
- ▶ Low Clearance
- ▶ Versatility

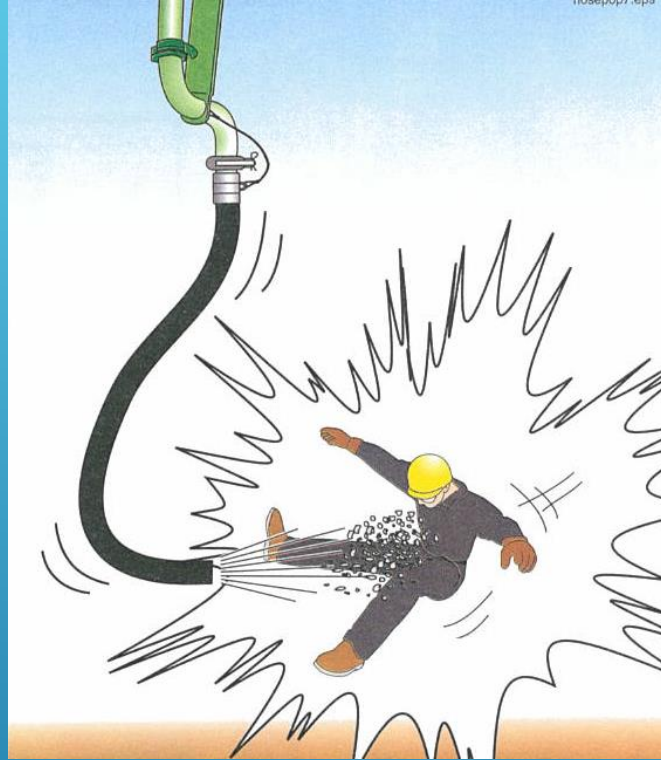


Figure 90

**Stay away from the point of discharge
when starting or restarting, and when
there's air in the pipeline**

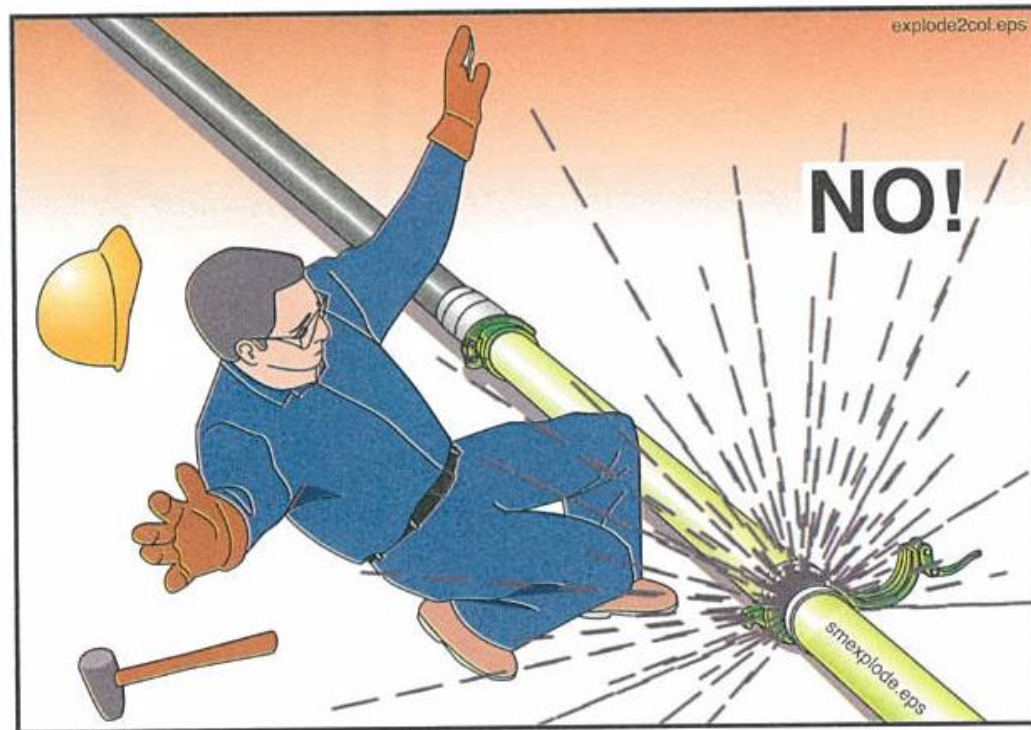


Figure 91
Never open a pressurized pipeline

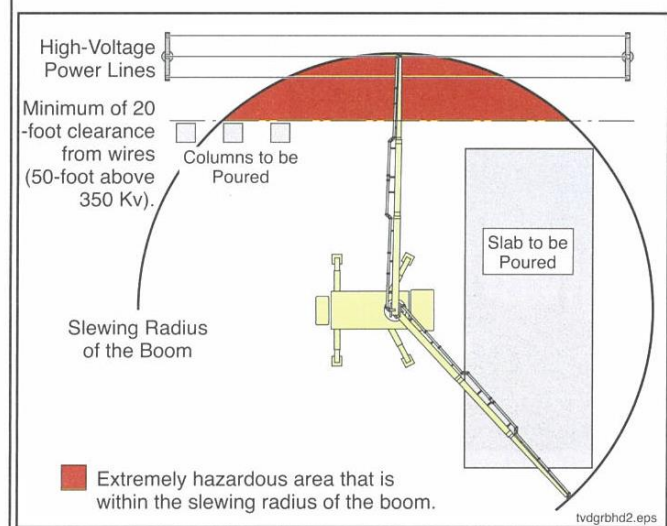
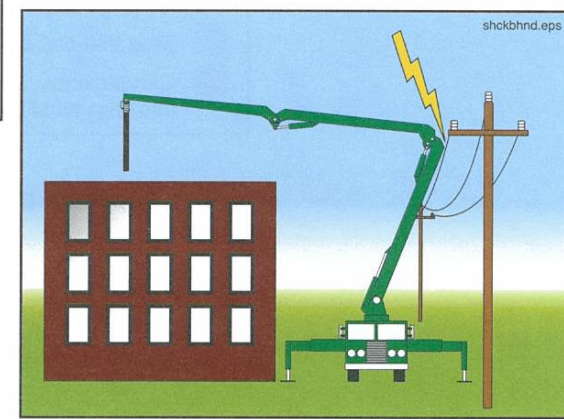
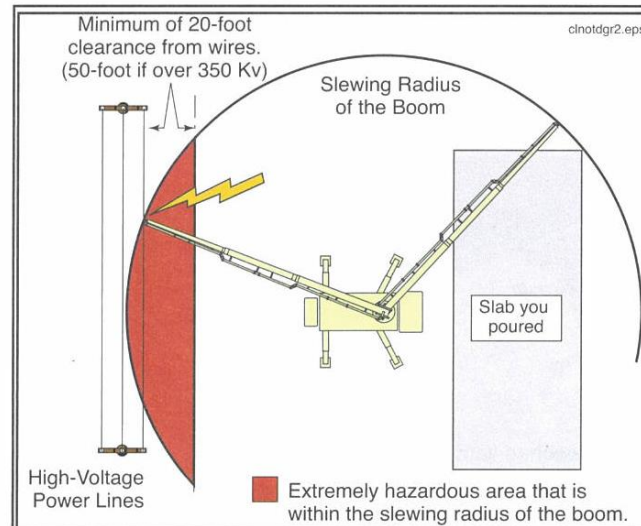
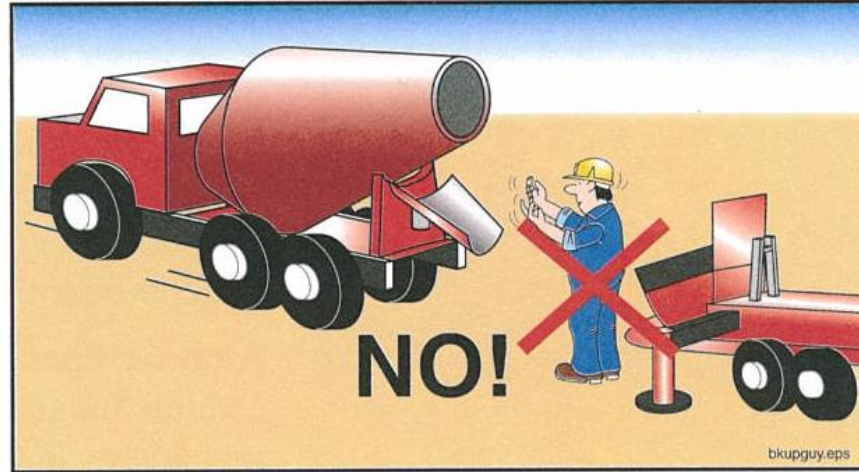


Figure 16
The hazard exists even if the power lines are not in the area of the pour

⚠ WARNING Crushing hazard. Never, ever position yourself between the ready mix truck and the pump! Stand to the side, where the driver can see you (Figure 78).

Figure 78
Never stand between
the ready mix truck and
the pump



⚠ WARNING When backing in ready mix trucks, use clear and concise hand signals (Figure 79).

Figure 79
Use clear, concise
hand signals





Figure 66

Never use air to blow out hoses or short pipelines

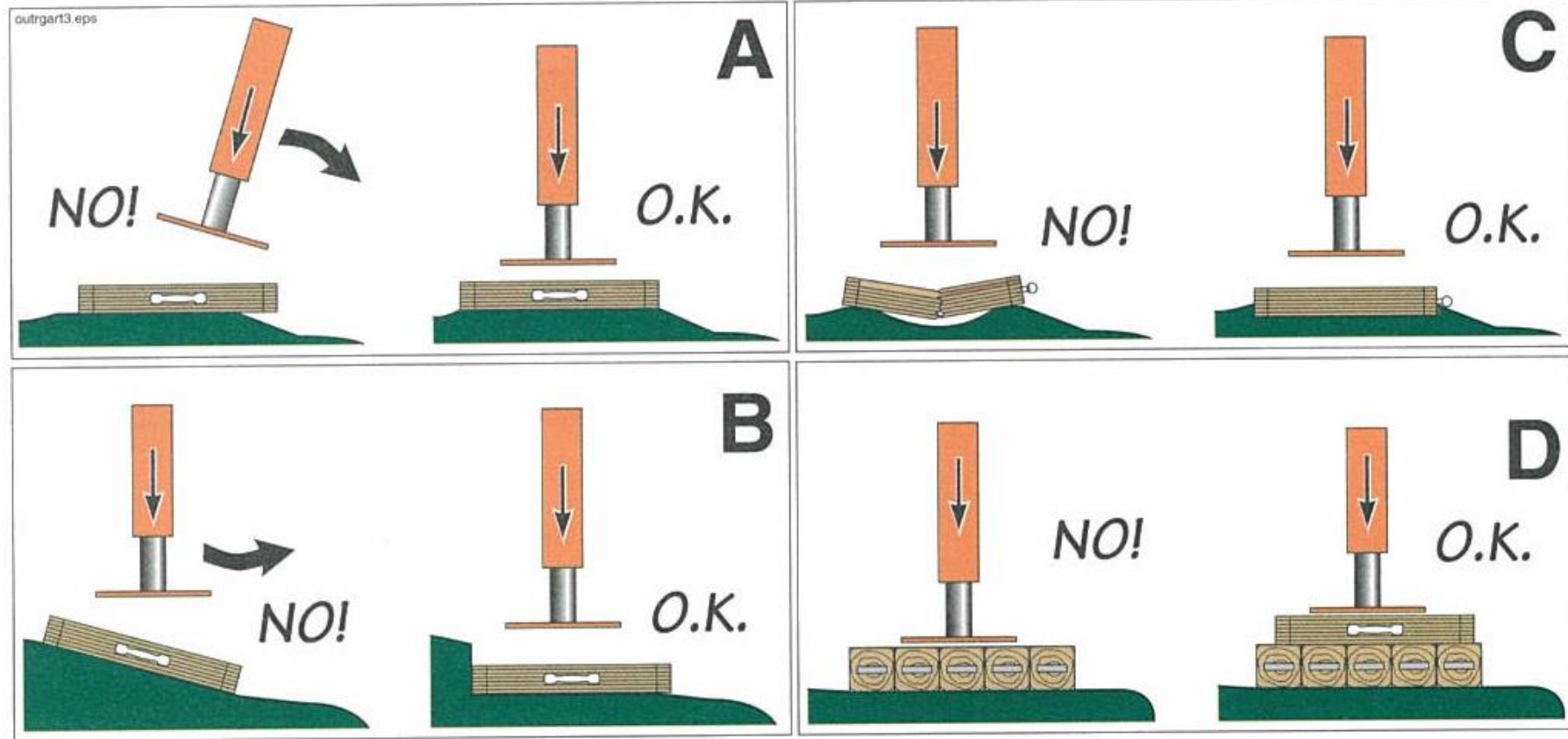


Figure 32
Beware of these outrigger hazards

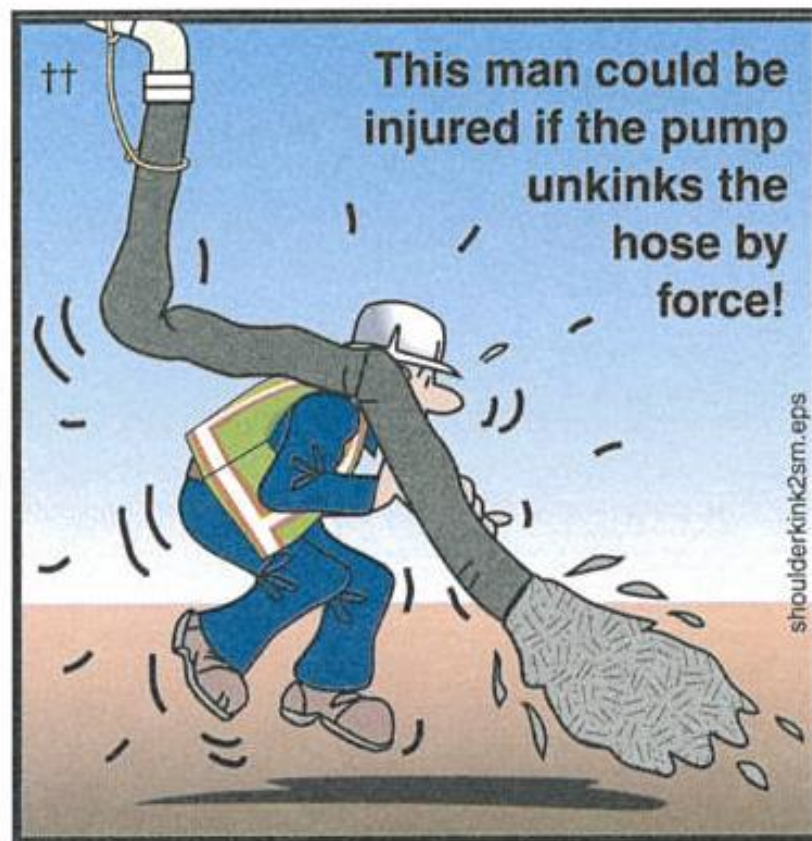
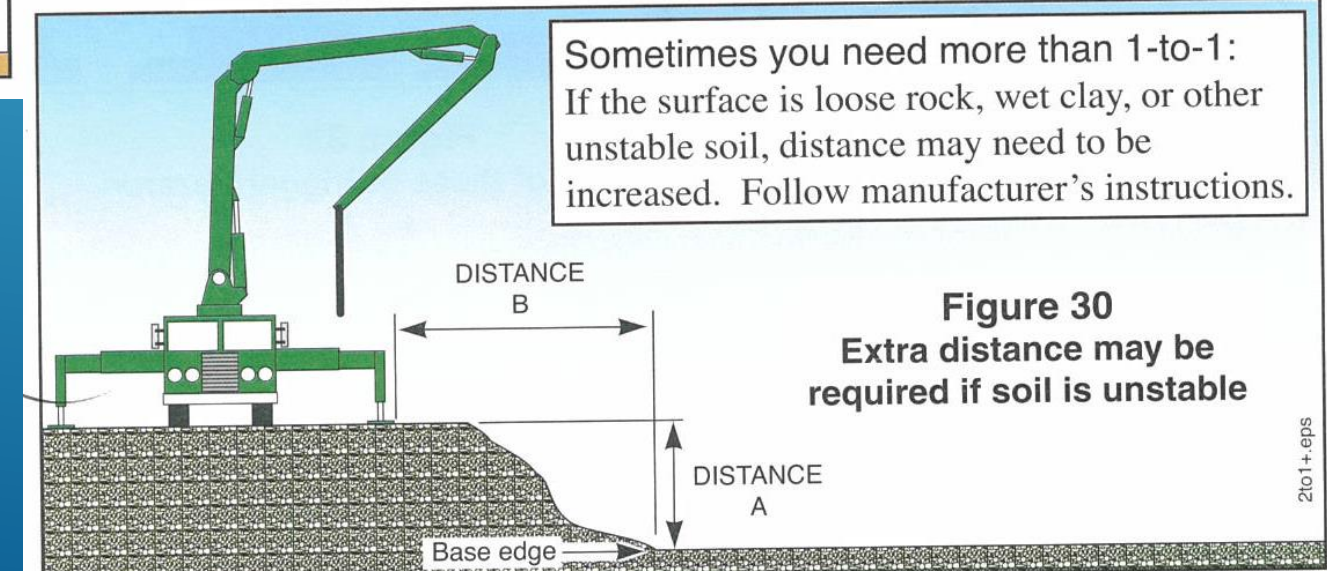
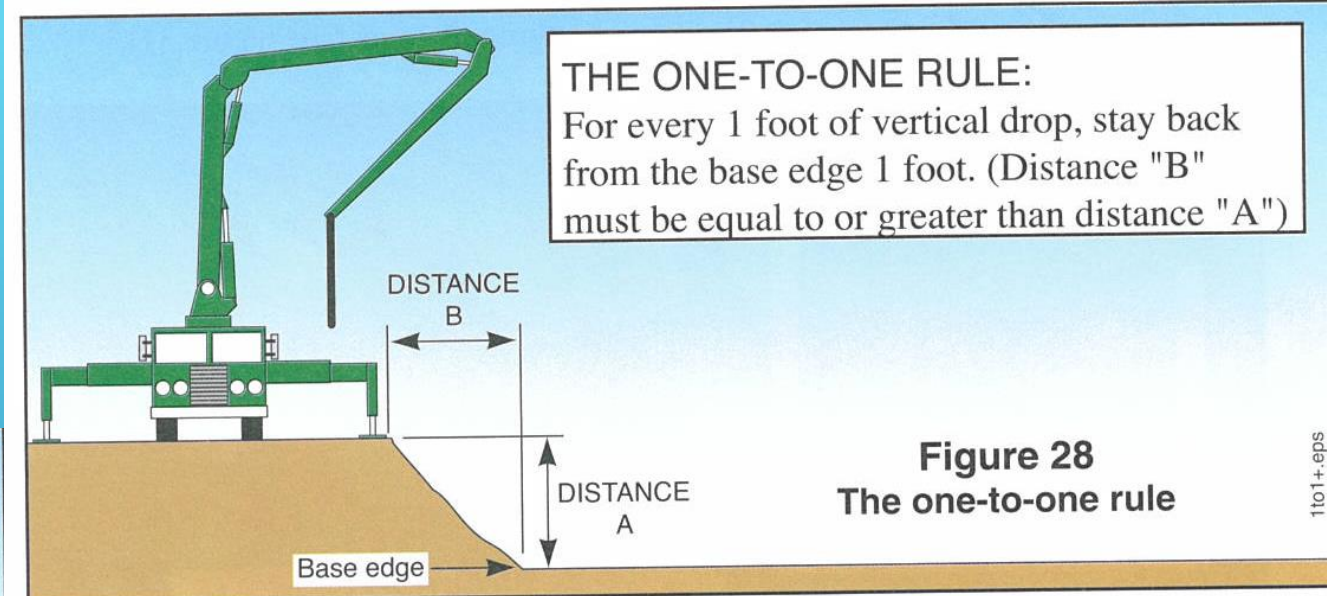
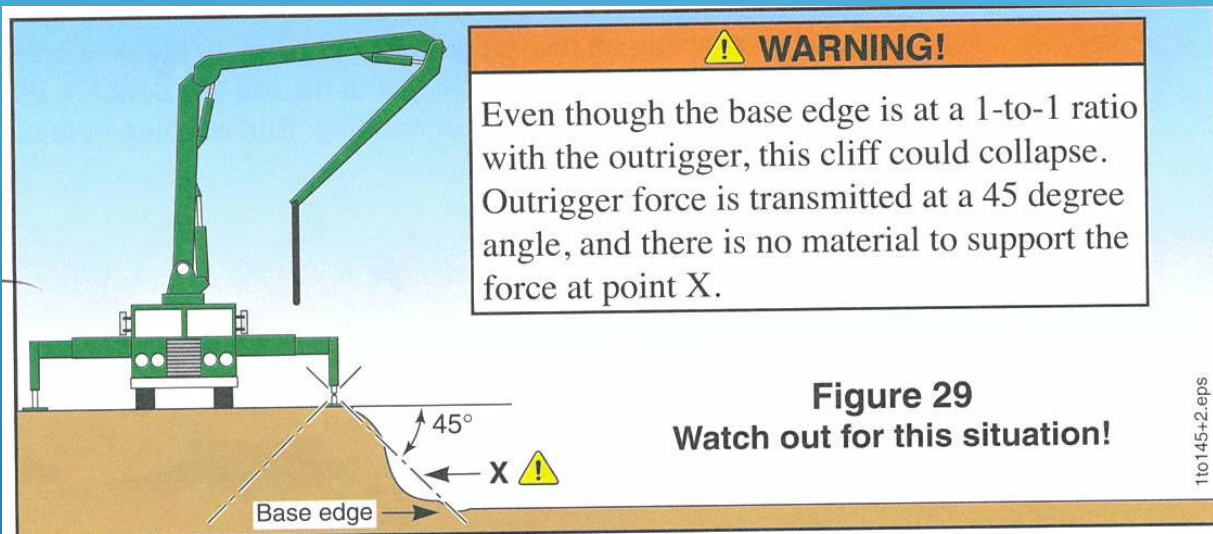
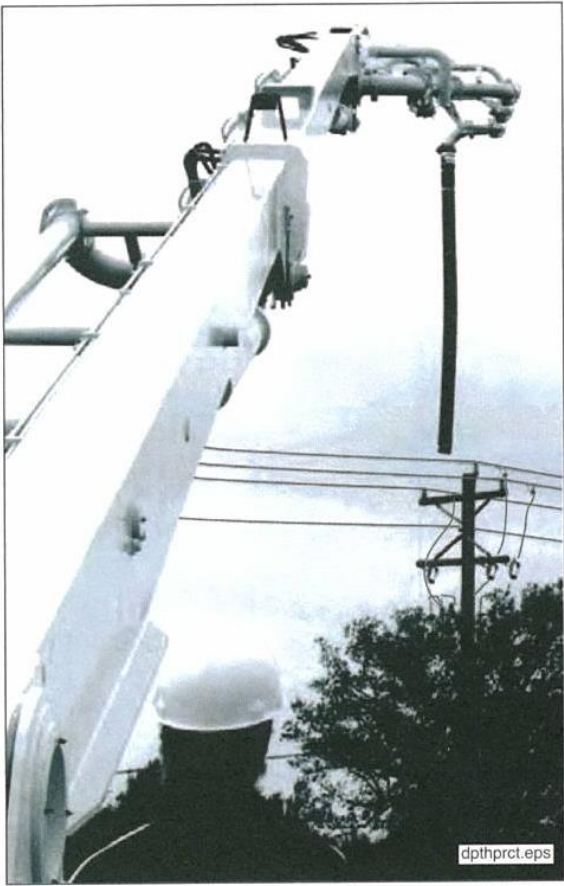
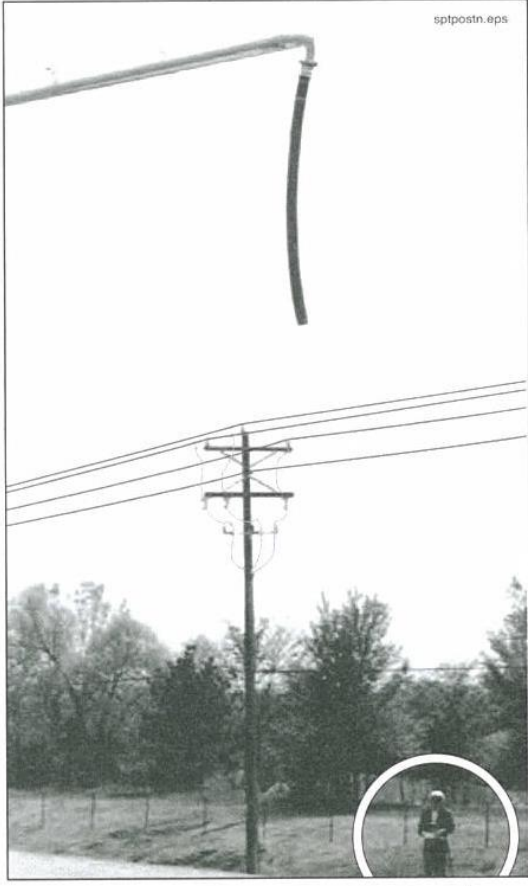


Figure 55
Kinking the hose
creates a hazard



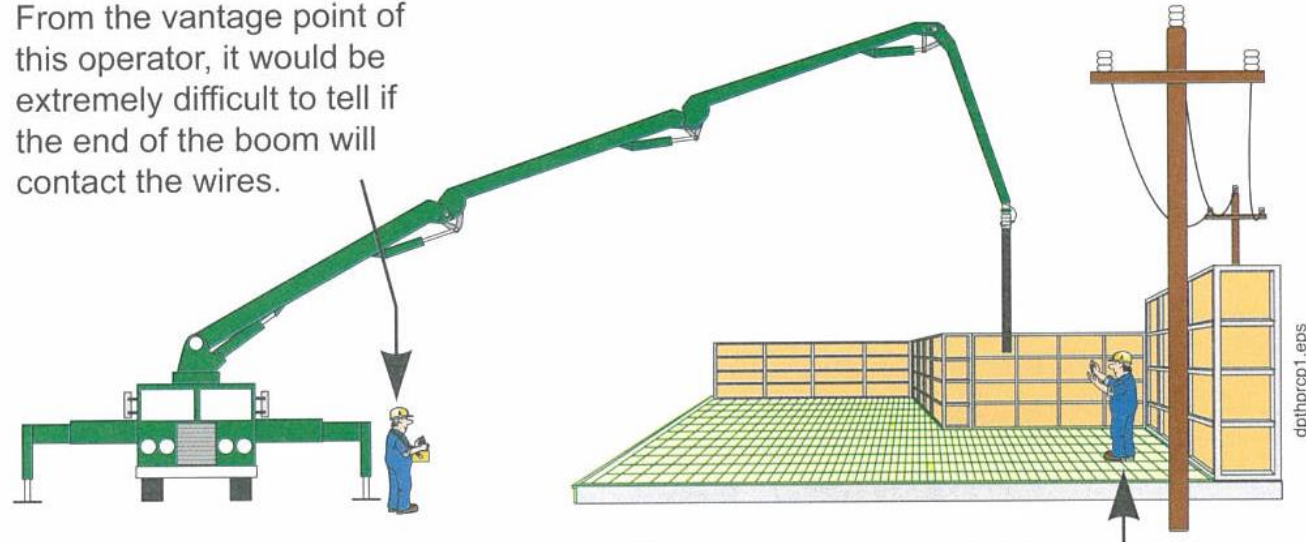


Will it hit the wires?
You can't tell from here.



Get the best possible
vantage point

From the vantage point of this operator, it would be extremely difficult to tell if the end of the boom will contact the wires.



Where power lines are within 20 feet of the area to be poured (50 feet for lines over 350 Kv), a dedicated spotter must be employed to observe movements of the boom. **DO NOT RELY ON DEPTH PERCEPTION WITH POWER LINES!**

Figure 17
Never rely on depth perception with power lines

PUMPING



OR



CONVEYOR